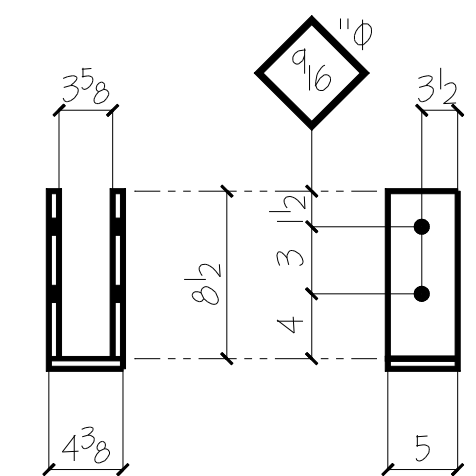


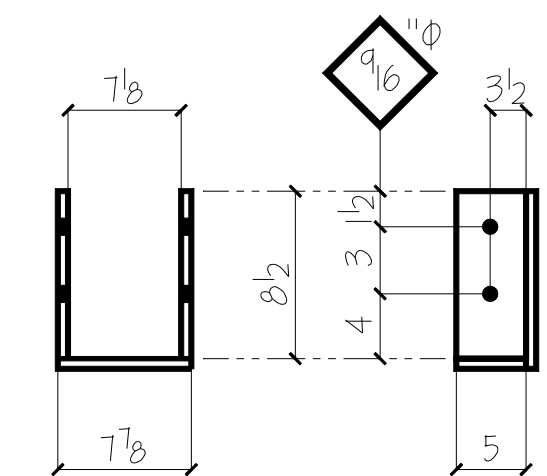
Saddles Type SD6

2 - Req'd This Sheet Per B6xx
 Side PL's 3/8 x 5 x 4 1/2
 Bottom PL 3/8 x 5 x 6 3/8
 Back PL's 3/8 x 9 x 6 1/2



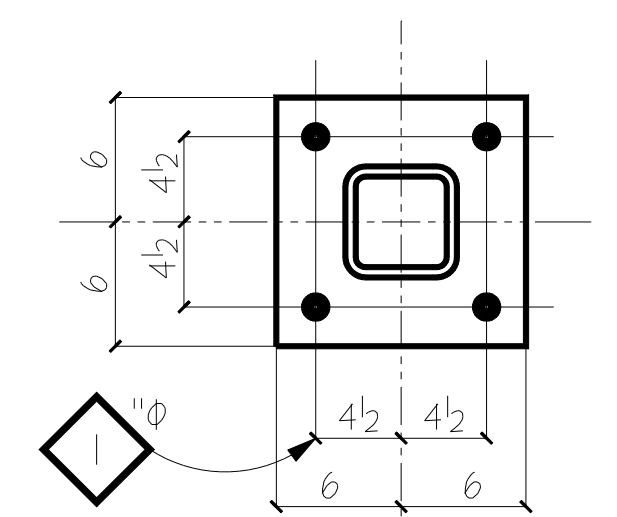
Saddles Type SD4

6 - Req'd This Sheet Per B4xx
 Side PL's 3/8 x 5 x 4 1/2
 Bottom PL 3/8 x 5 x 4 3/8



Saddles Type SD7

5 - Req'd This Sheet Per B7xx
 Side PL's 3/8 x 5 x 4 1/2
 Bottom PL 3/8 x 5 x 7 1/8
 Back PL's 3/8 x 9 x 8

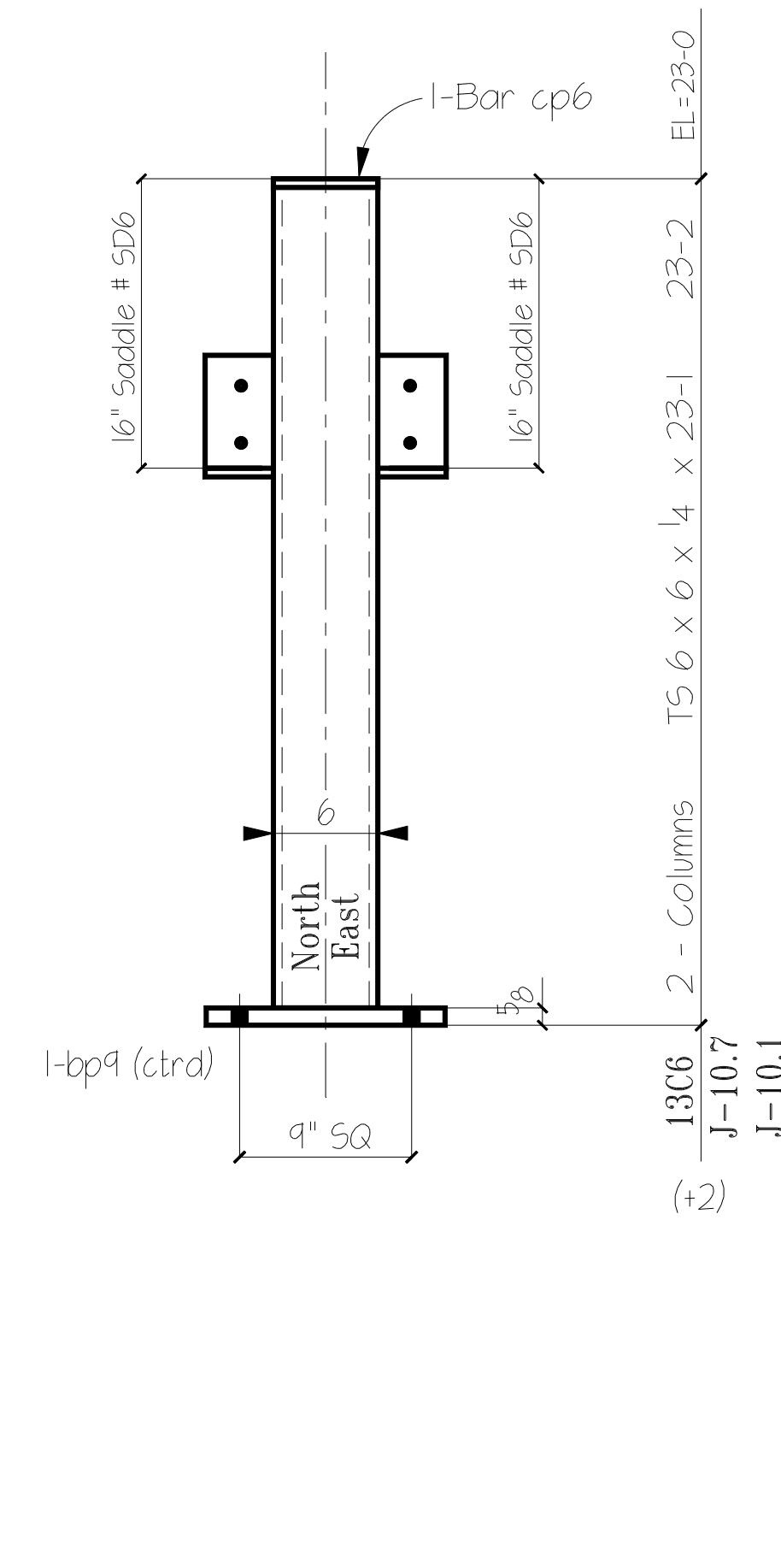
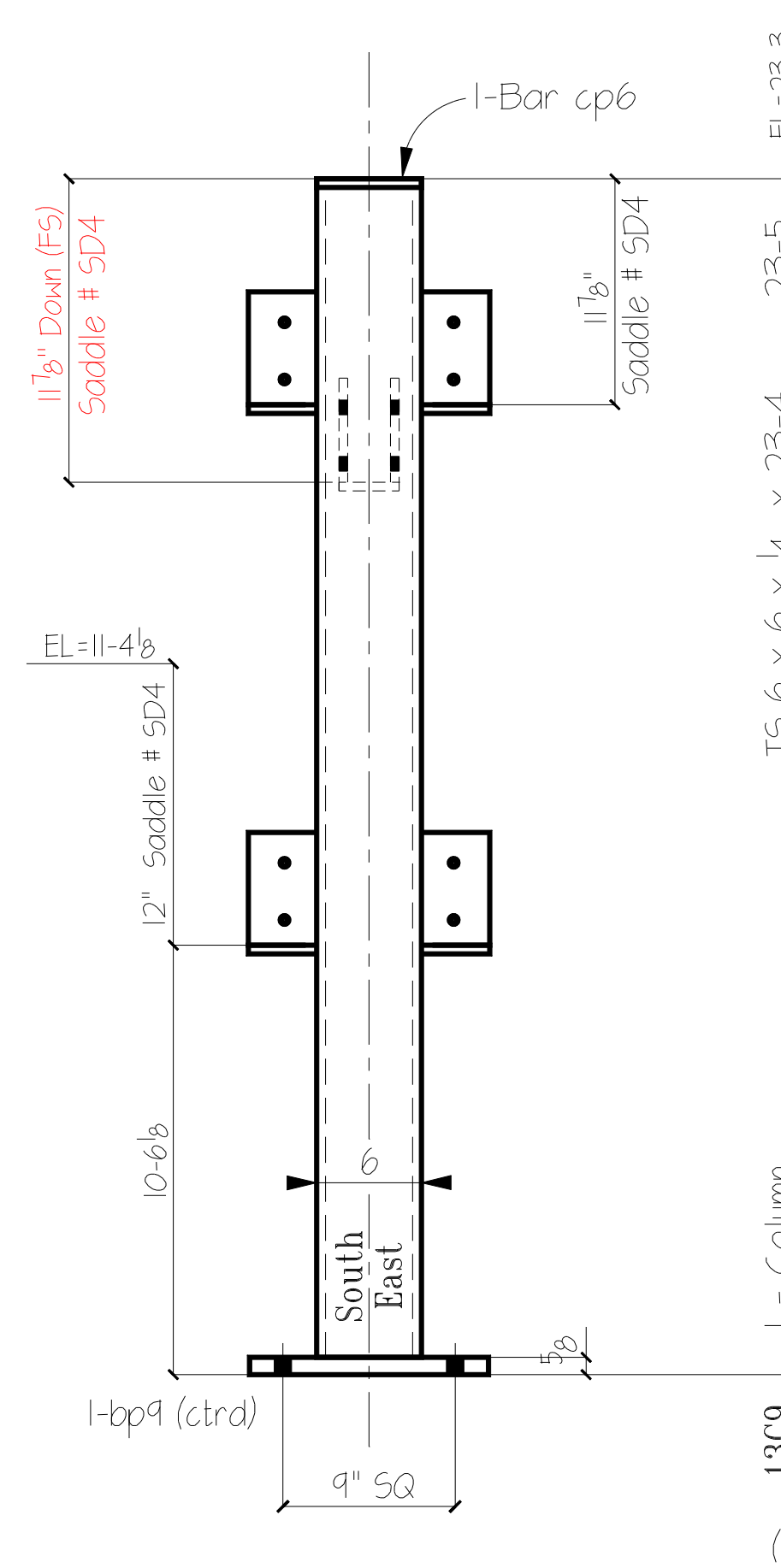
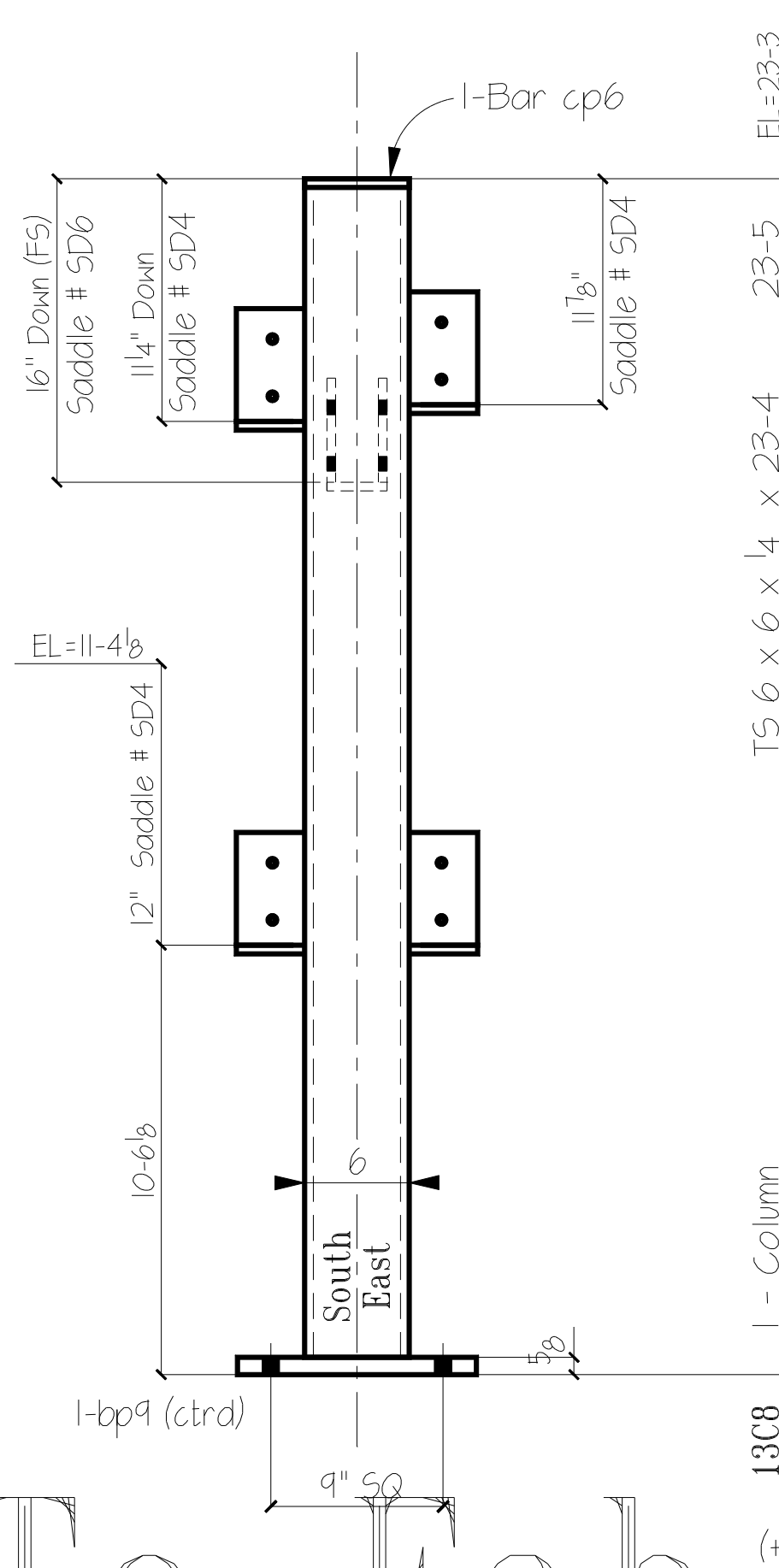
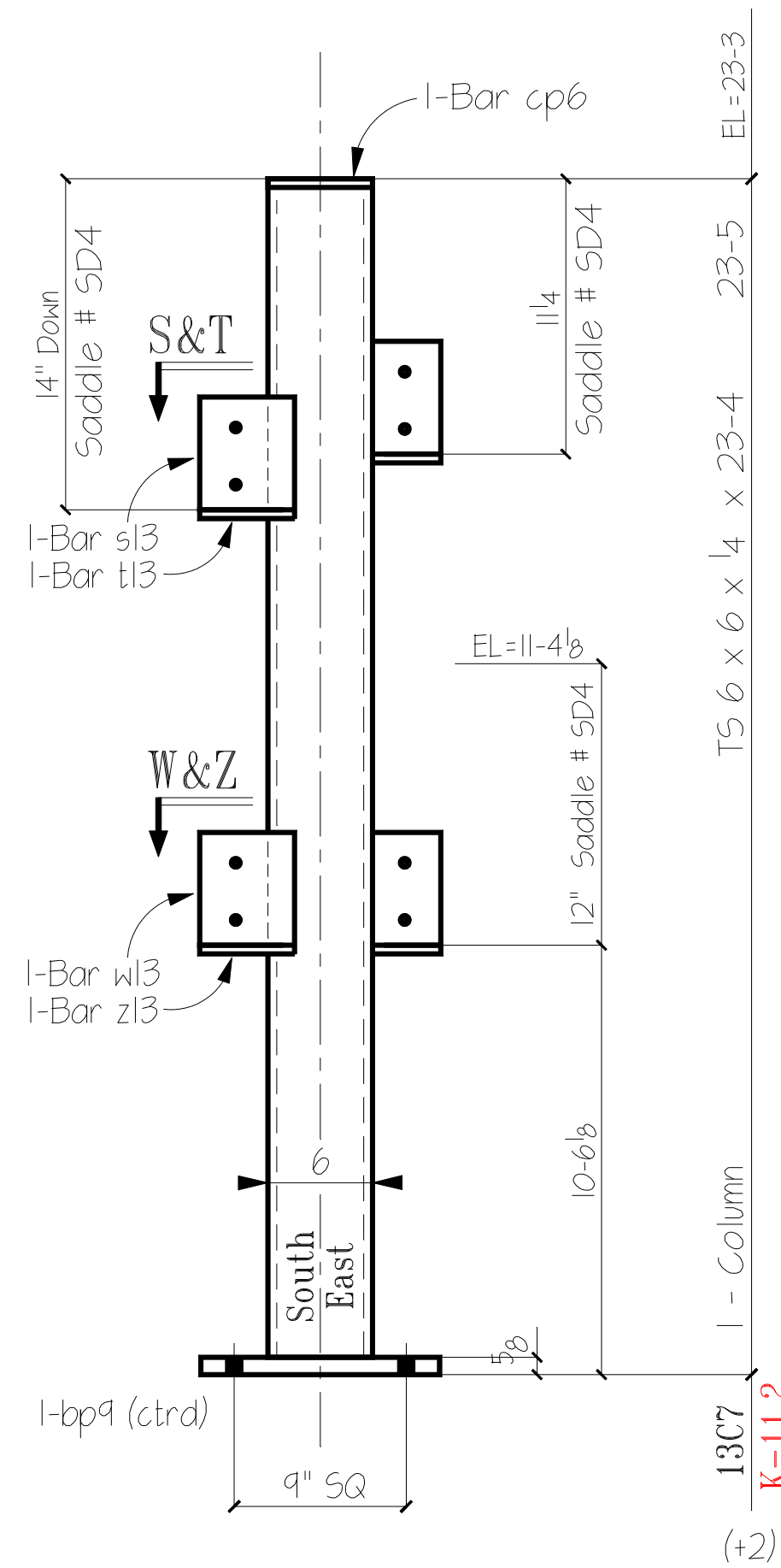
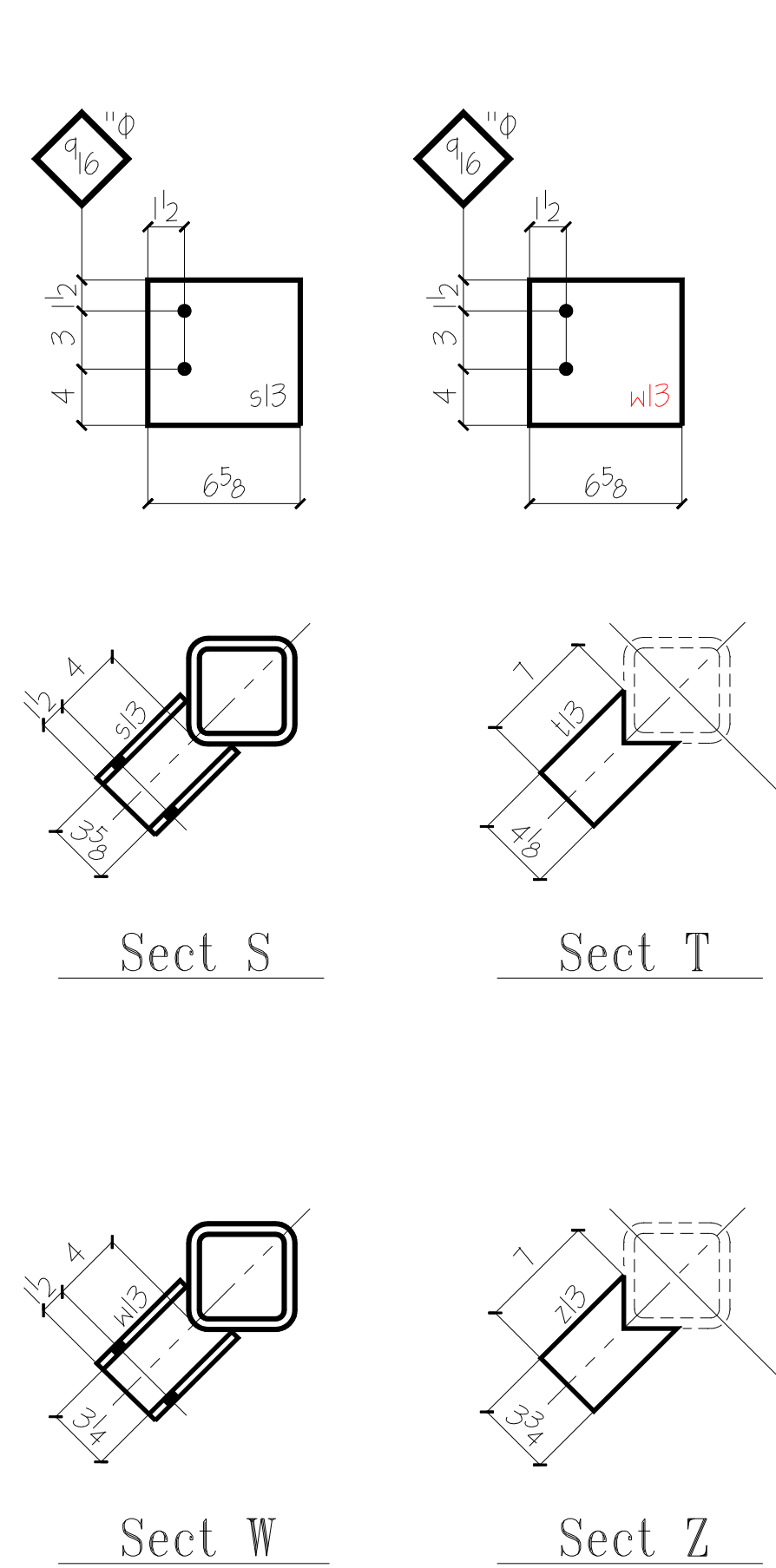
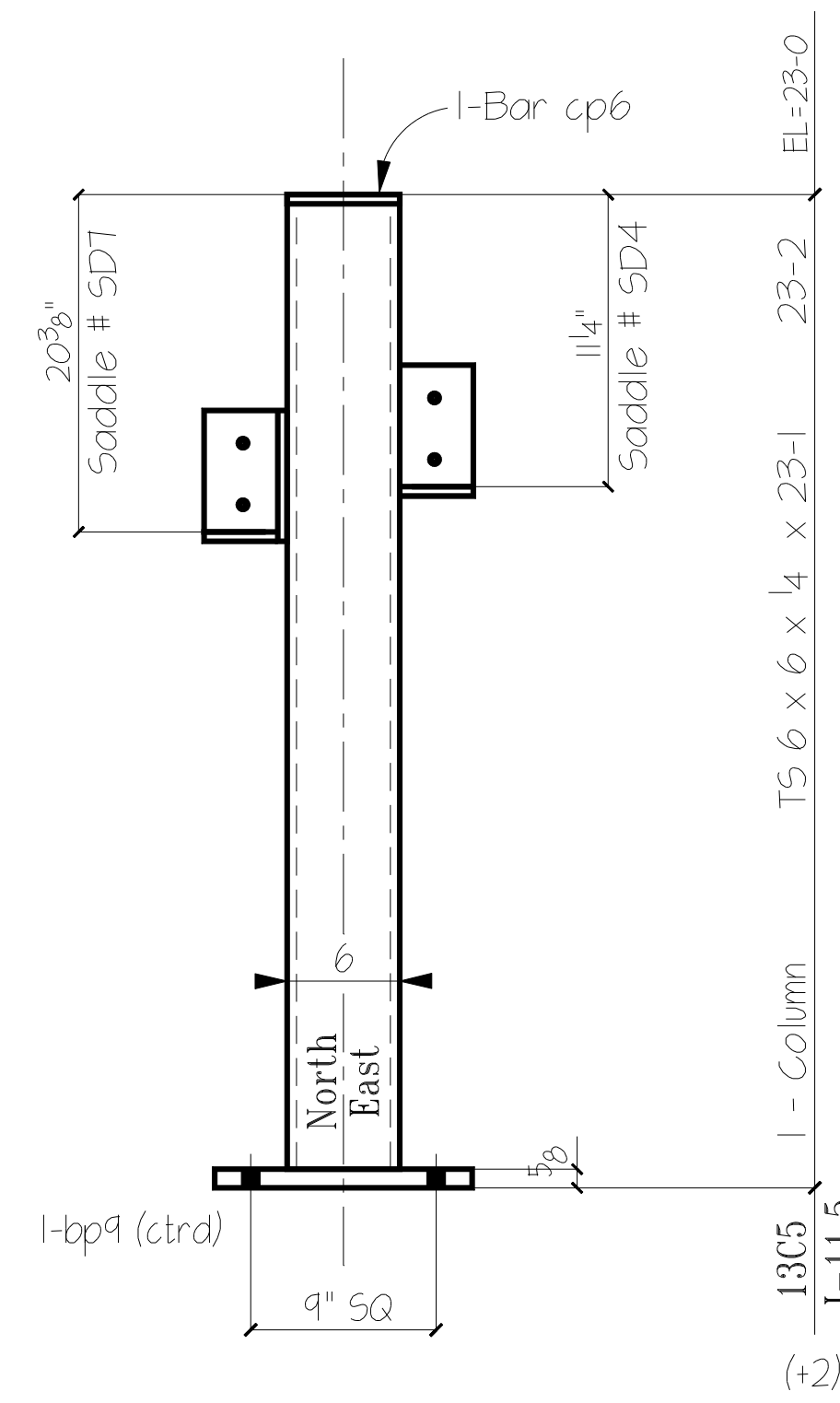
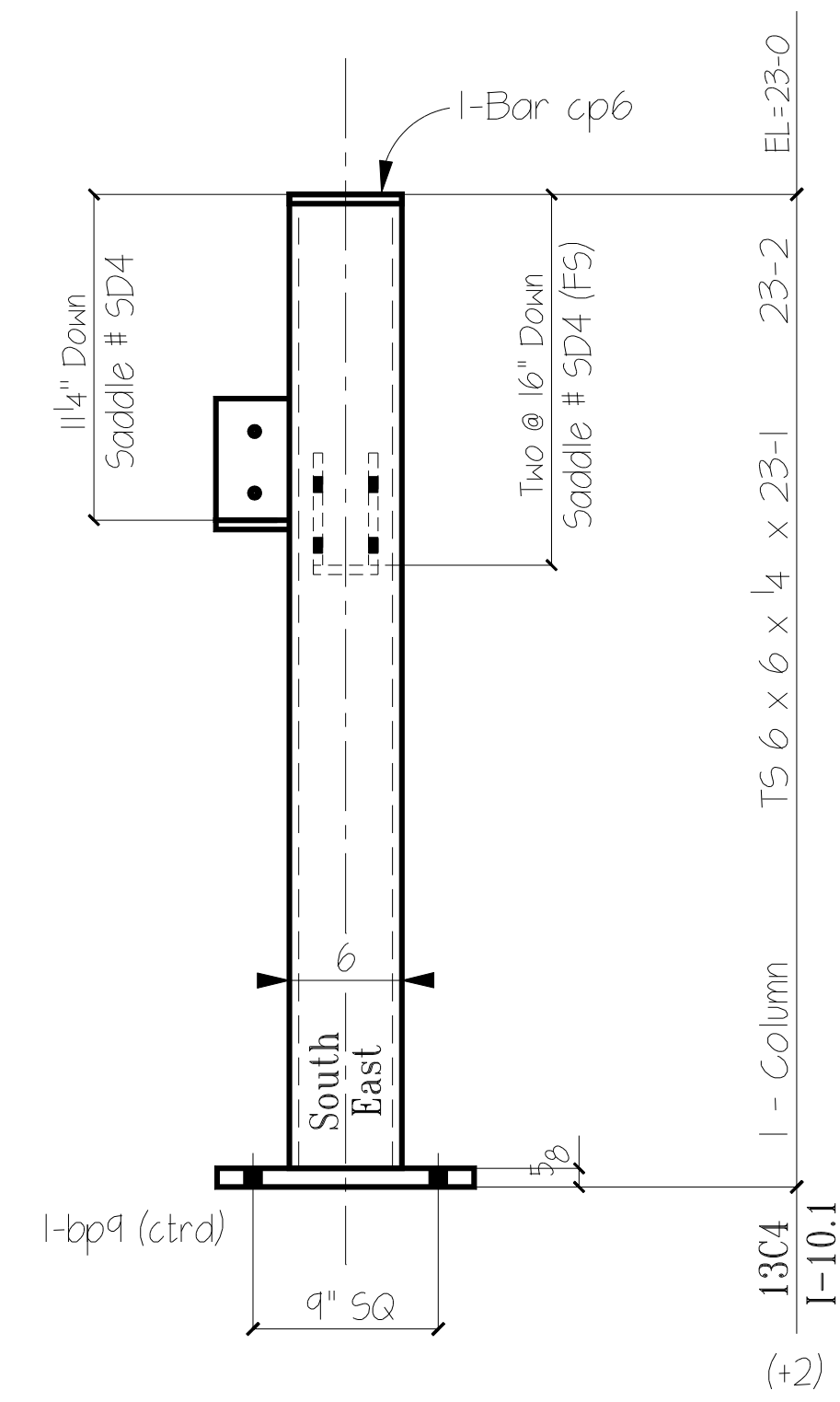
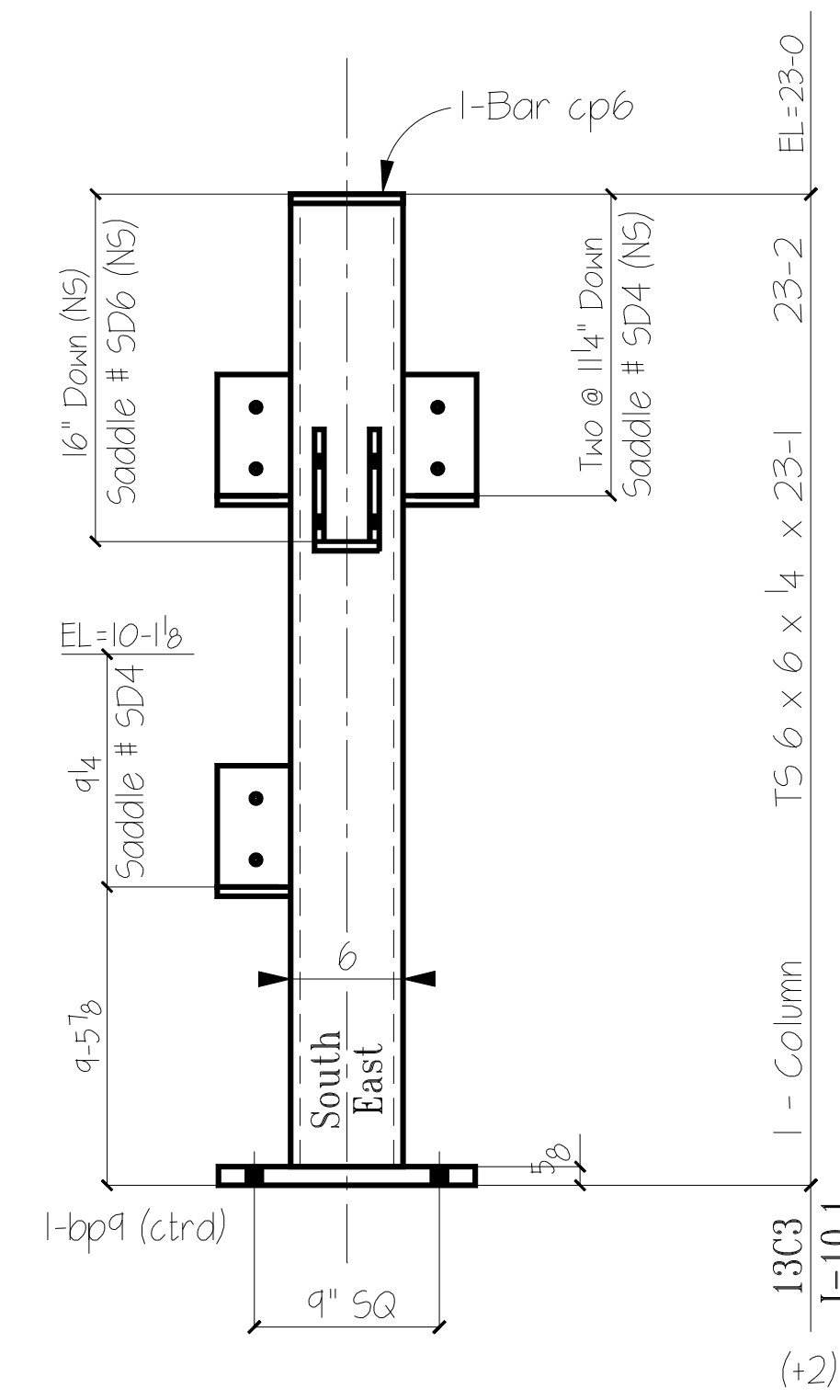
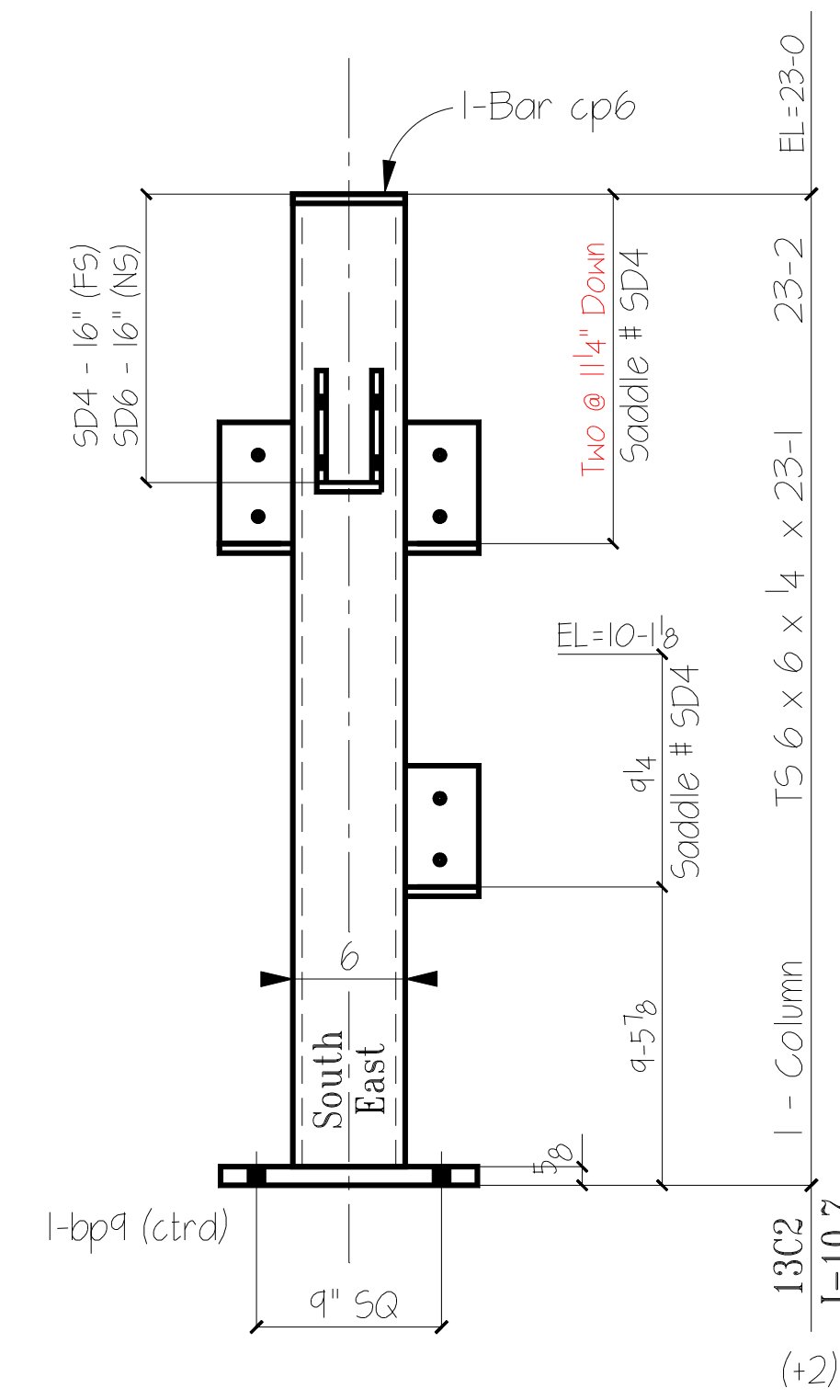
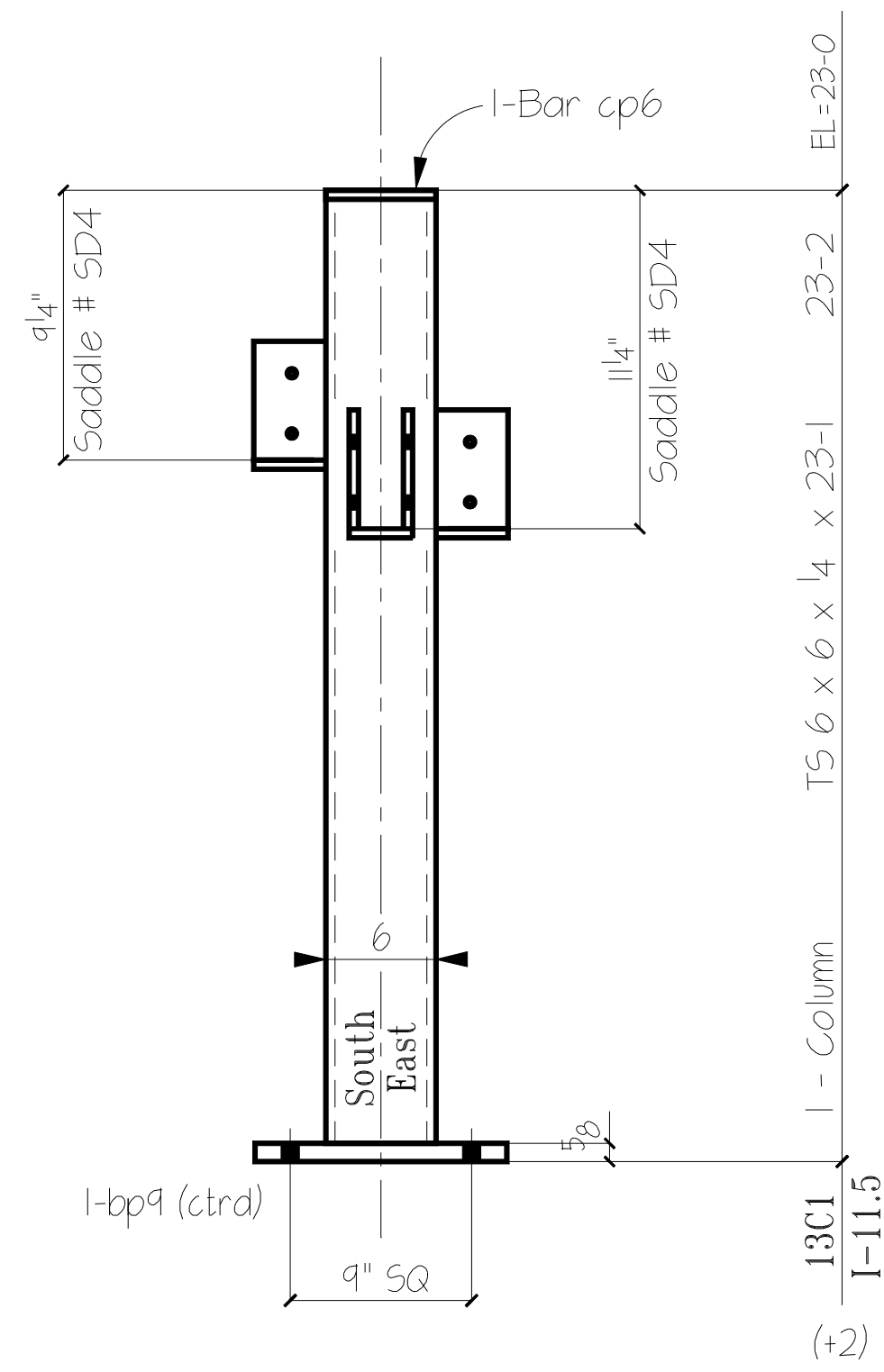


Base PL Type BP9

Bar 3/8 x 12 x 12

To Fab
 11-19-08

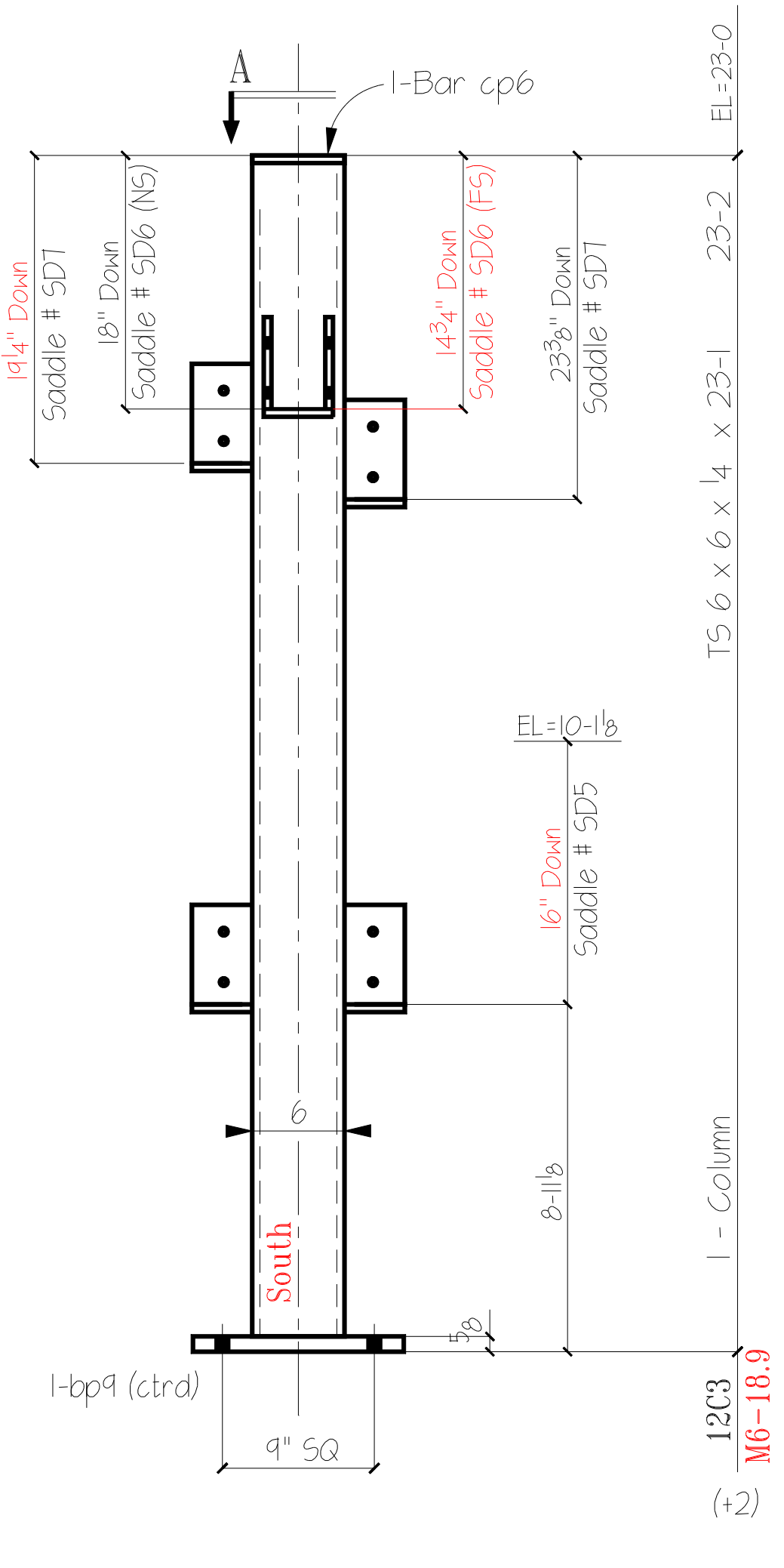
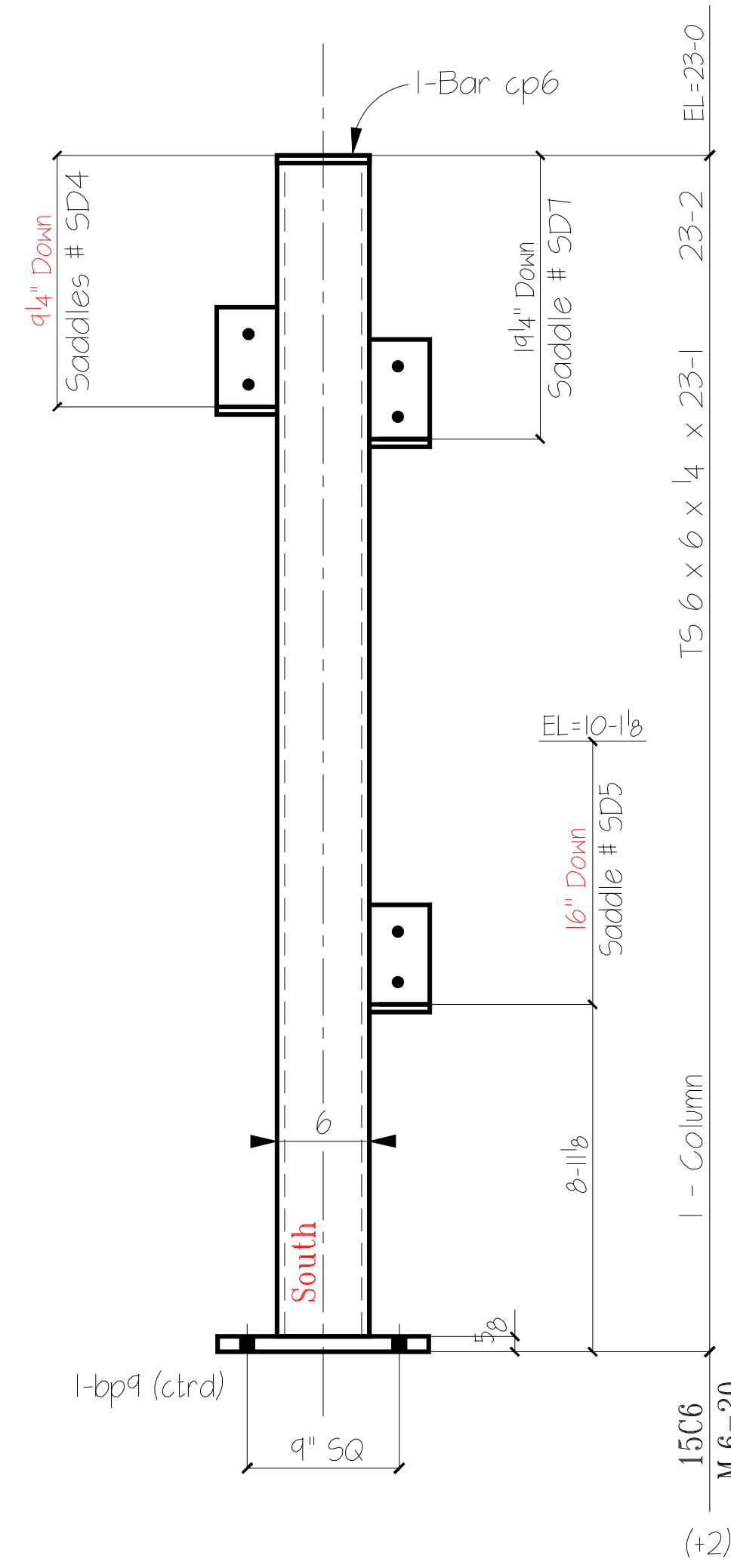
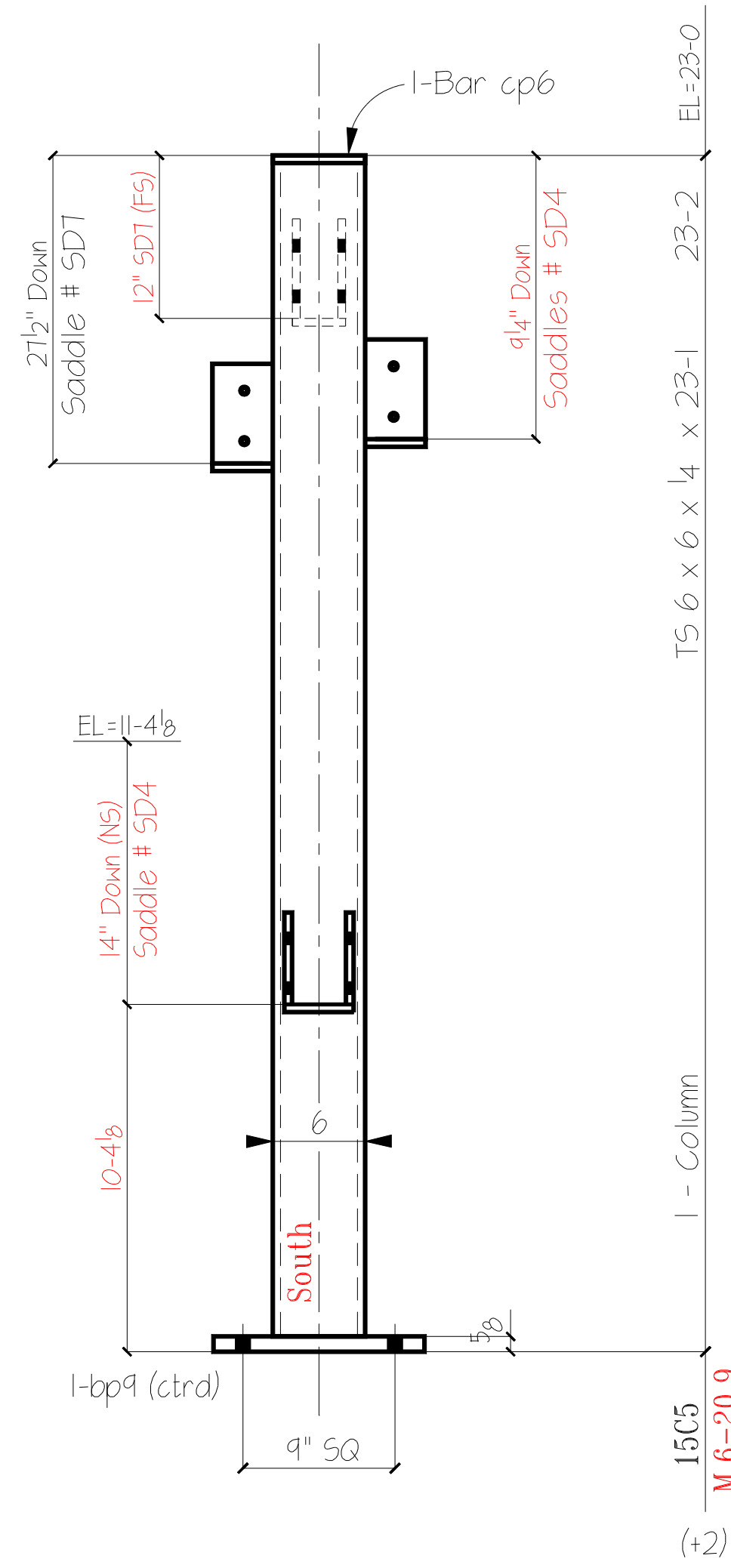
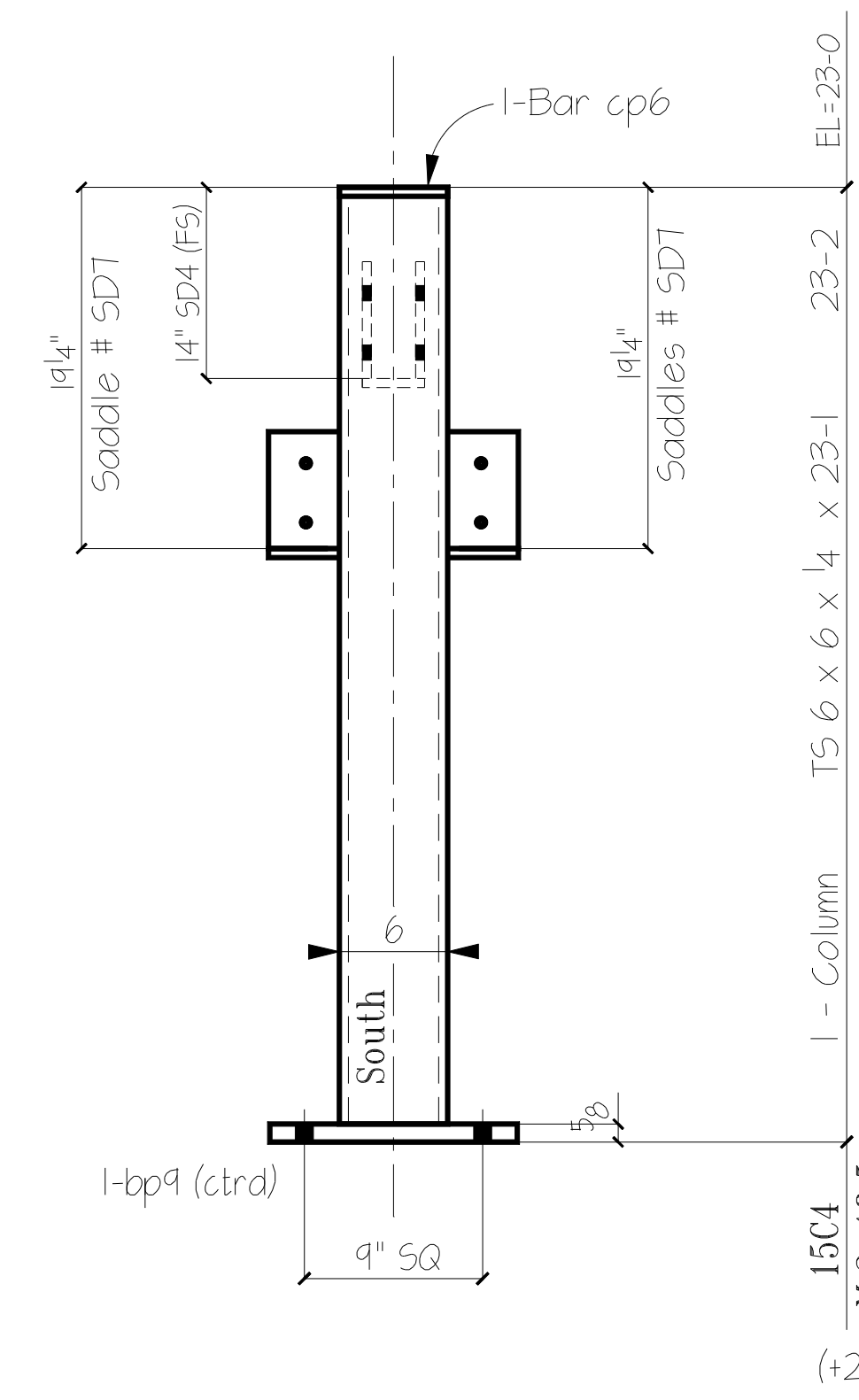
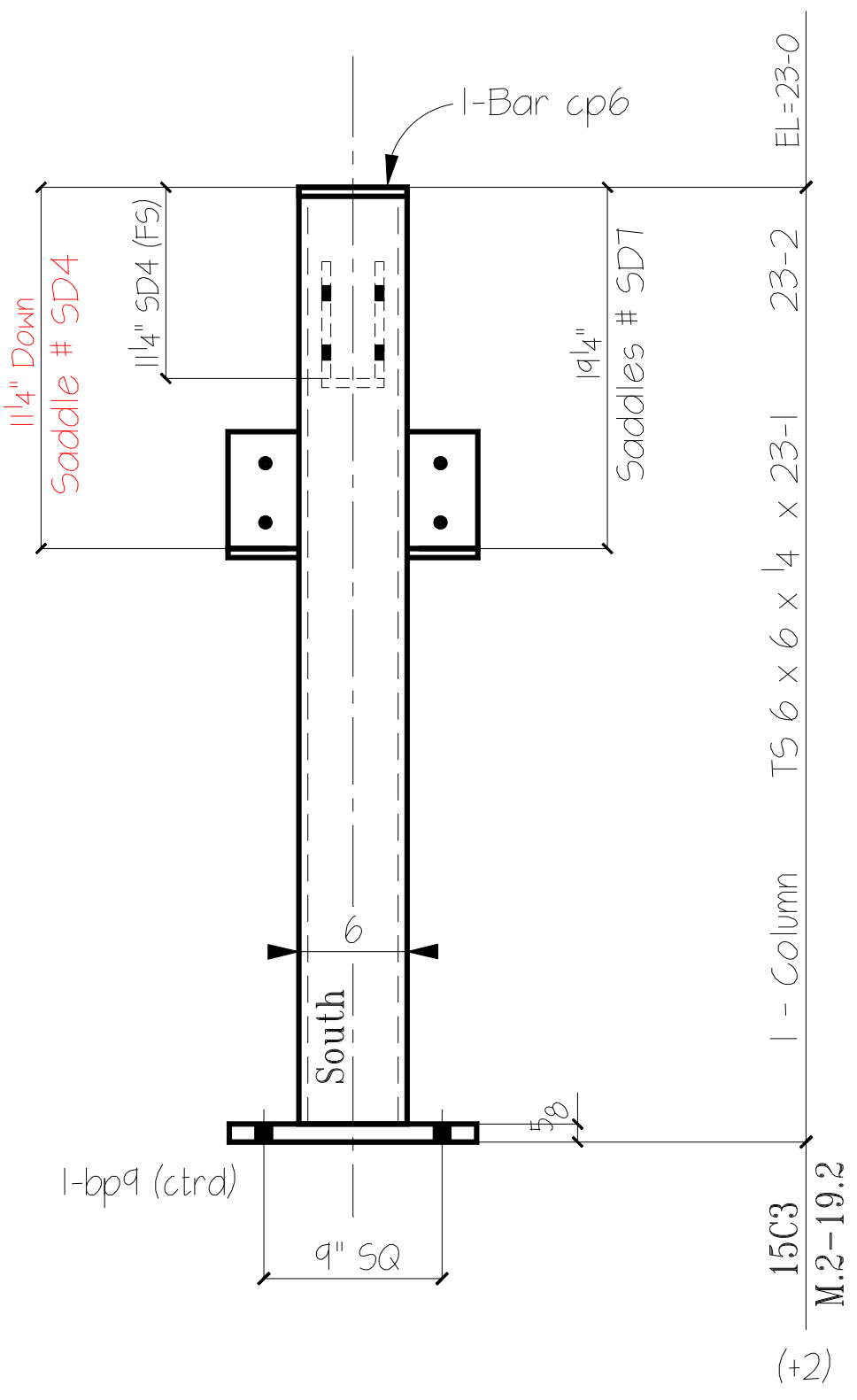
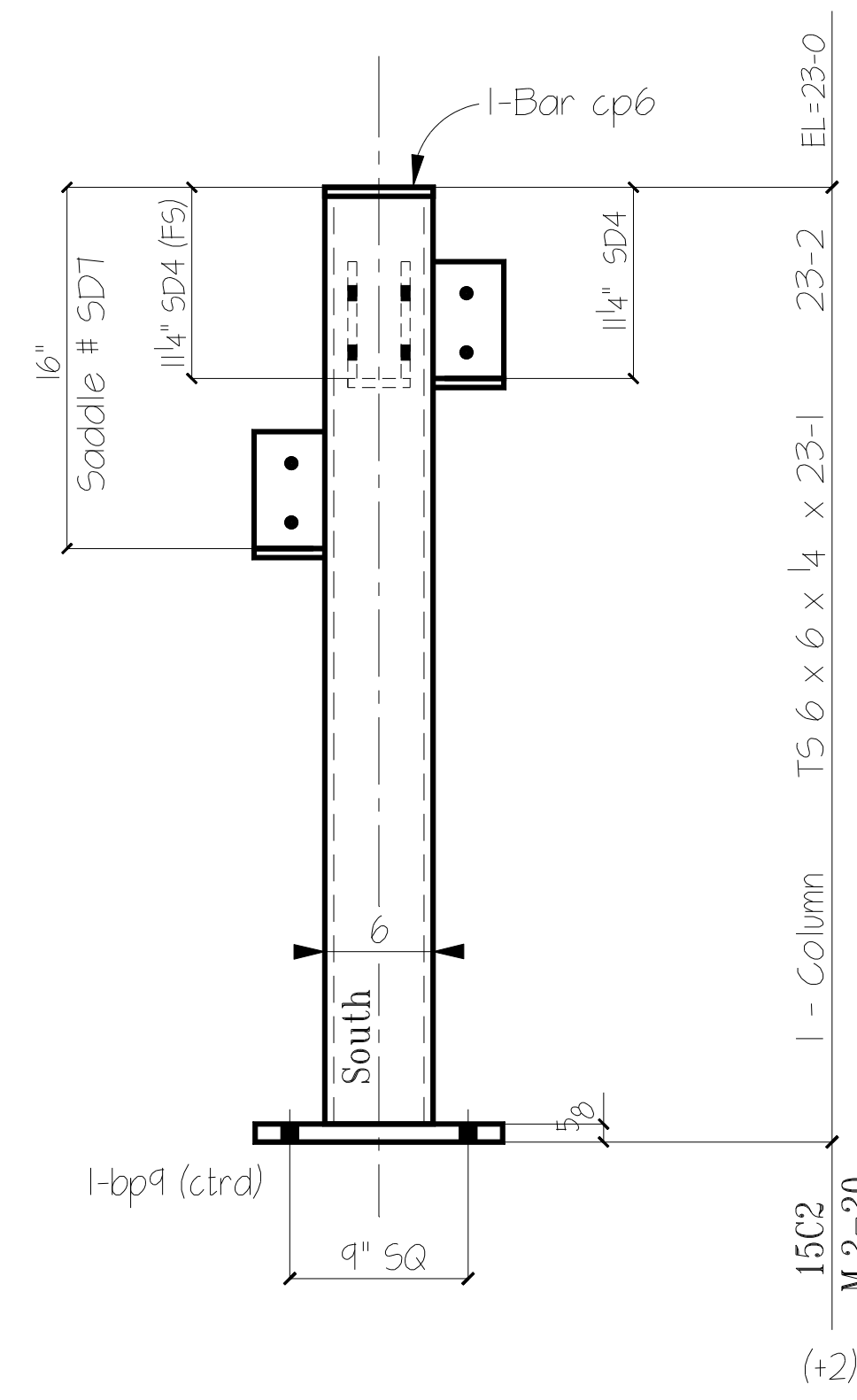
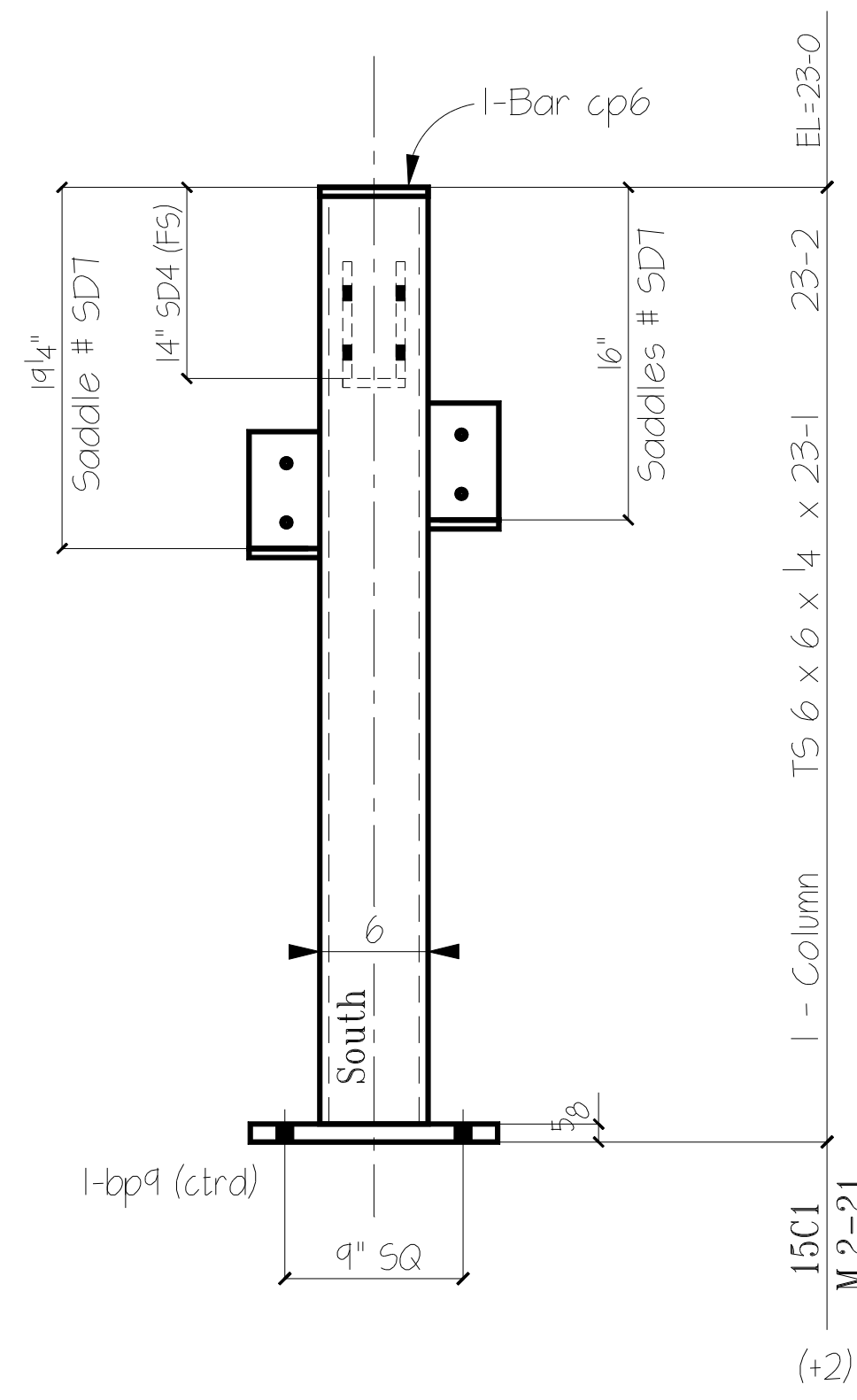
MARK	QTY	DESCRIPTION	LENGTH
8C1	1	TS 6 x 6 x 1/4	22-11 1/2
bp9	1	PL 5/8 x 12	1-0
cp6	1	Bar 3/8 x 6	0-6
8C2	1	TS 6 x 6 x 1/4	22-11 1/2
bp9	1	PL 5/8 x 12	1-0
cp6	1	Bar 3/8 x 6	0-6
8C3	1	TS 6 x 6 x 1/4	23-1
bp9	1	PL 5/8 x 12	1-0
cp6	1	Bar 3/8 x 6	0-6
8C4	1	TS 6 x 6 x 1/4	23-1
bp9	1	PL 5/8 x 12	1-0
cp6	1	Bar 3/8 x 6	0-6
8C5	1	TS 6 x 6 x 1/4	23-1
bp9	1	PL 5/8 x 12	1-0
cp6	1	Bar 3/8 x 6	0-6
8C6	1	TS 6 x 6 x 1/4	23-1
bp9	1	PL 5/8 x 12	1-0
cp6	1	Bar 3/8 x 6	0-6



MARK	QTY	DESCRIPTION	LENGTH
13C1	1	TS 6 x 6 x 1/4	23-1
bp9	1	PL 5/8 x 12	1-0
cp6	1	Bar 3/8 x 6	0-6
13C2	1	TS 6 x 6 x 1/4	23-1
bp9	1	PL 5/8 x 12	1-0
cp6	1	Bar 3/8 x 6	0-6
13C3	1	TS 6 x 6 x 1/4	23-1
bp9	1	PL 5/8 x 12	1-0
cp6	1	Bar 3/8 x 6	0-6
13C4	1	TS 6 x 6 x 1/4	23-1
bp9	1	PL 5/8 x 12	1-0
cp6	1	Bar 3/8 x 6	0-6
13C5	1	TS 6 x 6 x 1/4	23-1
bp9	1	PL 5/8 x 12	1-0
cp6	1	Bar 3/8 x 6	0-6
13C6	2	TS 6 x 6 x 1/4	23-1
bp9	2	PL 5/8 x 12	1-0
cp6	2	Bar 3/8 x 6	0-6
13C7	1	TS 6 x 6 x 1/4	23-4
bp9	1	PL 5/8 x 12	1-0
cp6	1	Bar 3/8 x 6	0-6
s13	2	PL 3/8 x 8 1/2	0-6 5/8
t13	1	PL 3/8 x 7	0-4 1/8
w13	2	PL 3/8 x 8 1/2	0-6 5/8
z13	1	PL 3/8 x 7	0-4 1/8
13C8	1	TS 6 x 6 x 1/4	23-4
bp9	1	PL 5/8 x 12	1-0
cp6	1	Bar 3/8 x 6	0-6
13C9	1	TS 6 x 6 x 1/4	23-4
bp9	1	PL 5/8 x 12	1-0
cp6	1	Bar 3/8 x 6	0-6

To Fab
11-25-08

A992 A36 A500 A53



MARK	QTY	DESCRIPTION	LENGTH	REMARK
15C1	1	T5 6 x 6 x 1/4	23-1	
bp9	1	PL 5/8 x 12	1-0	
cp6	1	Bar 3/8 x 6	0-6	
15C2	1	T5 6 x 6 x 1/4	23-1	
bp9	1	PL 5/8 x 12	1-0	
cp6	1	Bar 3/8 x 6	0-6	
15C3	1	T5 6 x 6 x 1/4	23-1	
bp9	1	PL 5/8 x 12	1-0	
cp6	1	Bar 3/8 x 6	0-6	
15C4	1	T5 6 x 6 x 1/4	23-1	
bp9	1	PL 5/8 x 12	1-0	
cp6	1	Bar 3/8 x 6	0-6	
15C5	1	T5 6 x 6 x 1/4	23-1	
bp9	1	PL 5/8 x 12	1-0	
cp6	1	Bar 3/8 x 6	0-6	
15C6	1	T5 6 x 6 x 1/4	23-1	
bp9	1	PL 5/8 x 12	1-0	
cp6	1	Bar 3/8 x 6	0-6	
15C7	1	T5 6 x 6 x 1/4	23-1	
bp9	1	PL 5/8 x 12	1-0	
cp6	1	Bar 3/8 x 6	0-6	

A992
A36

A500
A53