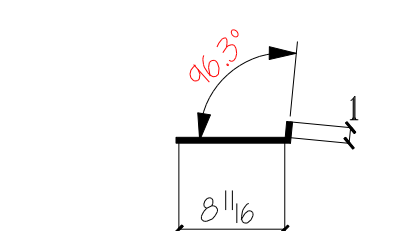
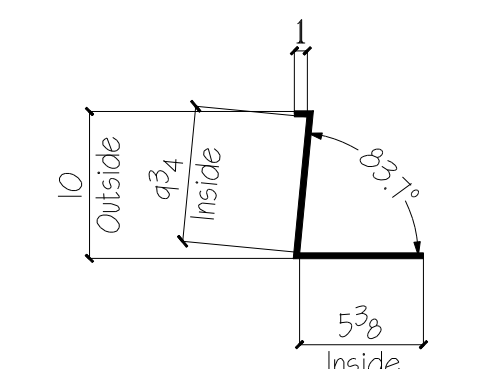
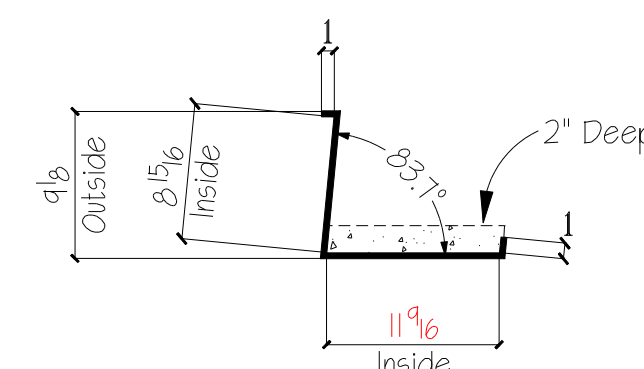
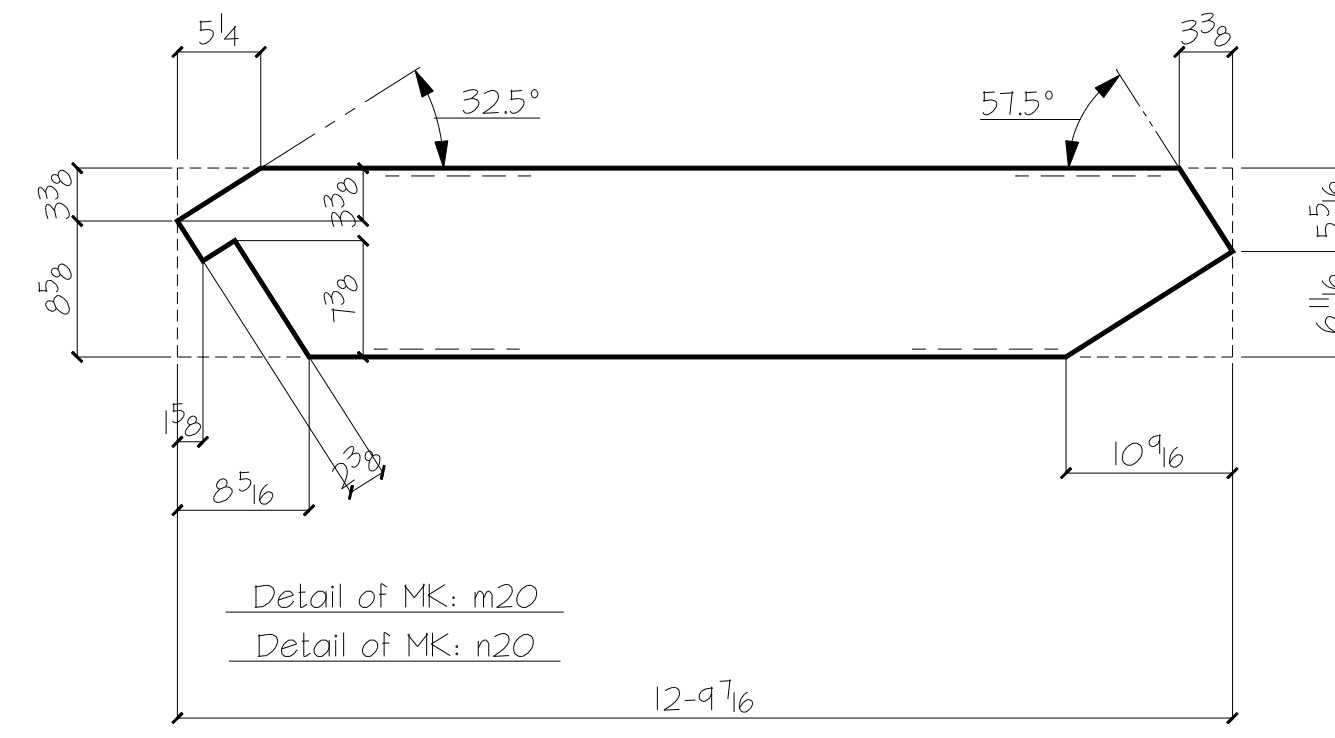
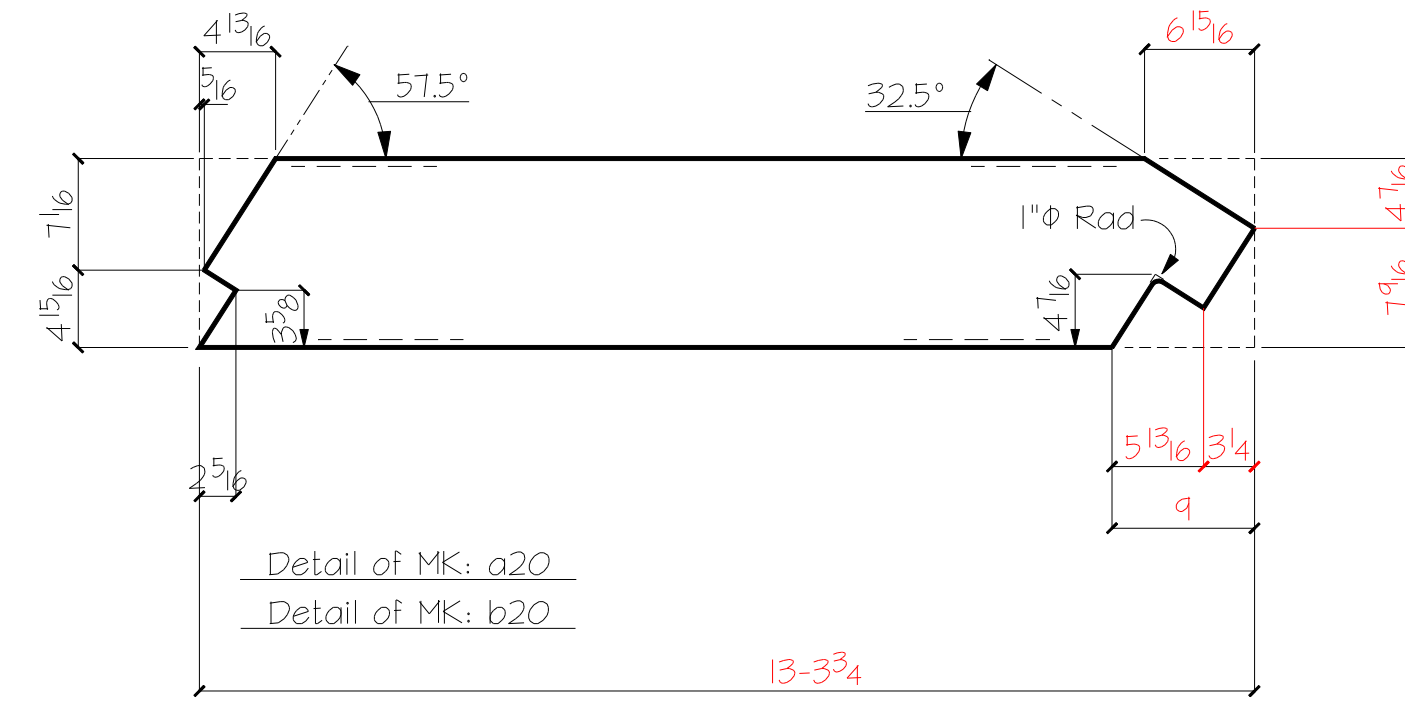
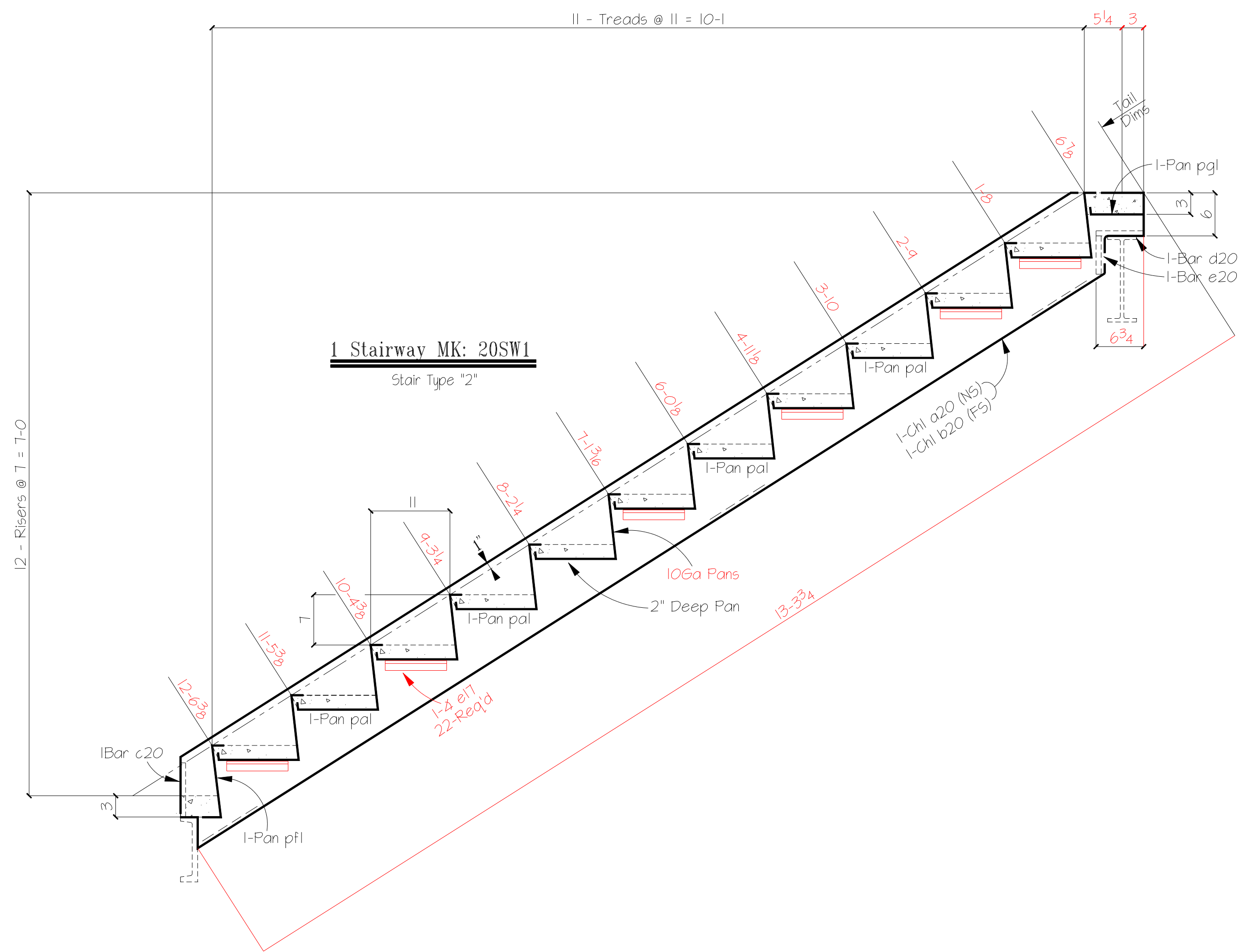


Useable Template Mark Letters
p q r s t u v w x y z
TSP FN: Daypa_D3.dwg

- DESCRIPTION OF REVISIONS MADE TO DRAWING -		MATERIAL GRADE SHELL BE <u>A36</u> U.N.O.		J&D Steel 4615 S Flores Road, Elmhurst Tx	
1		WF SHAPES <u>A992</u>	TUBES <u>A500</u>	210-621-0296 Fax 210-621-0943	
2		CHANNELS <u>A992</u>	PIPES <u>A501 or A53</u>	DETAILS OF <u>Stair # 2 - Plan Layout</u>	
3		COATING <u>One S/C Red Oxide Primer</u>		CUSTOMER <u>Crownhill Builders Inc</u>	
REVISION DESCRIPTION		DATE	MADE BY	CHK BY	SHOPED
REF DWG <u>A1.2</u>		APPROVAL _____ TO SHOP		DATE <u>7-18-08</u>	
		13/16" Ø	1/4"	E700XX	
		OPEN HOLE	FILLET	ELECTRODES	
		DETAIL <u>DY</u>	DATE <u>4-23-08</u>	JOB # <u>8007</u>	SHEET # <u>SE2</u>
		CHK.R <u>MG</u>	DATE <u>8-24-08</u>		



1-PL 10 Ga x 22 1/2\"/>

Detail of Bent PL pal

(11 - Req'd) Per Each 20SW1
(11 - Req'd) Per Each 20SW2

1-PL 10 Ga x 16 1/8\"/>

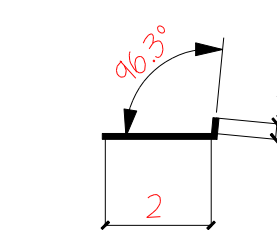
Detail of Bent PL pfl

(1 - Req'd) Per Each 20SW1

1-PL 10 Ga x 9 1/8\"/>

Detail of Bent PL pgl

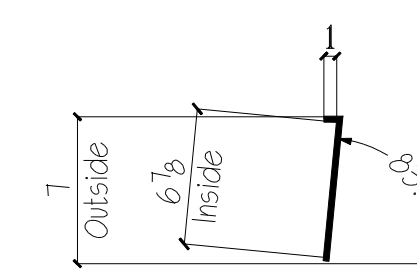
(1 - Req'd) Per Each 20SW1



1-PL 10 Ga x 3\"/>

Detail of Bent PL pk1

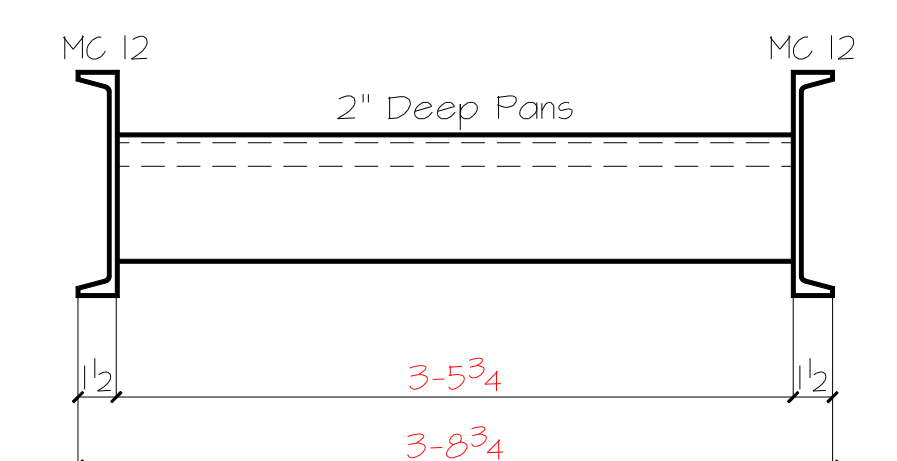
(1 - Req'd) Per Each 20SW2



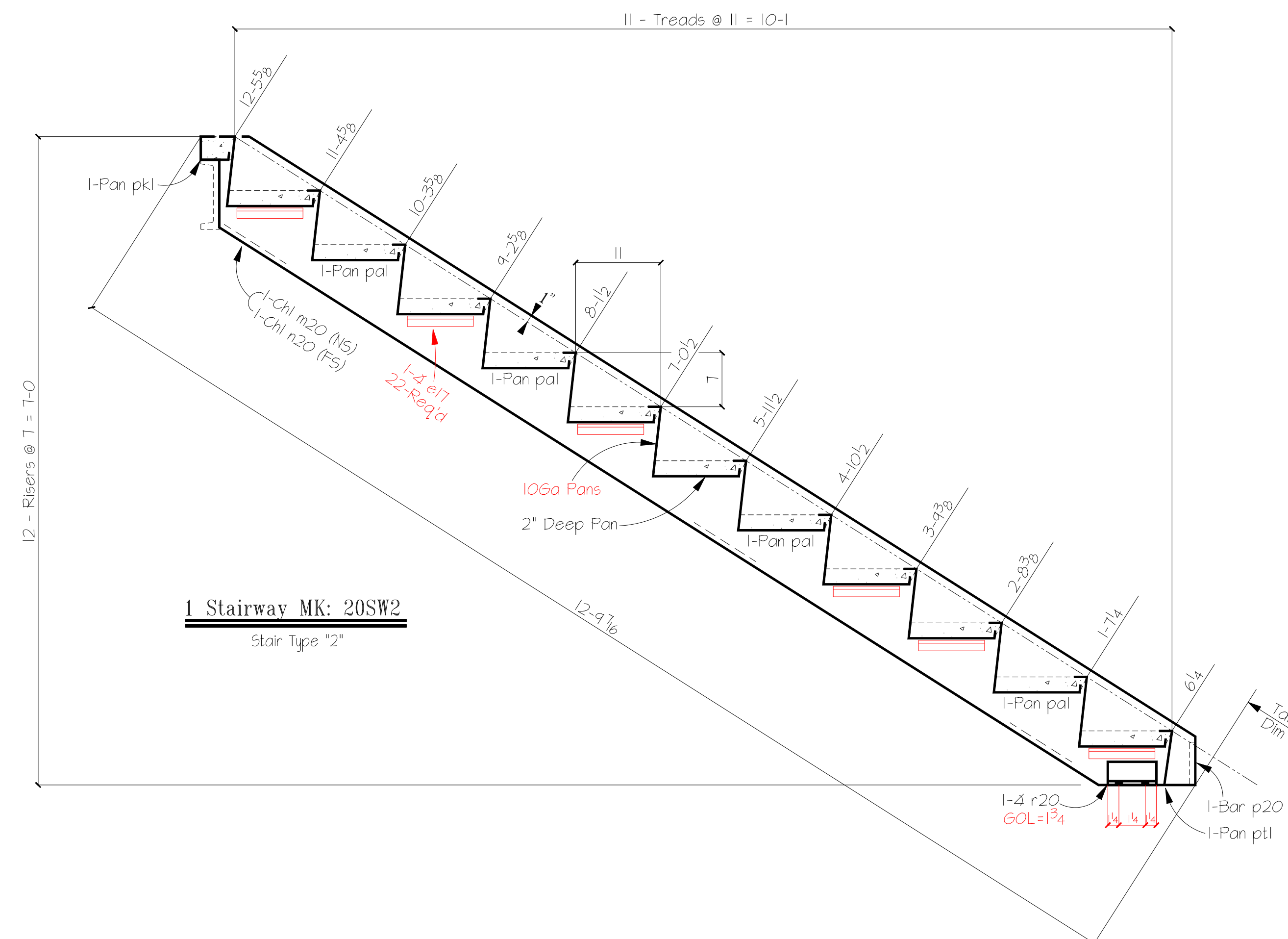
1-PL 10 Ga x 7 1/8\"/>

Detail of Bent PL pti

(1 - Req'd) Per Each 20SW2



Stair Front View



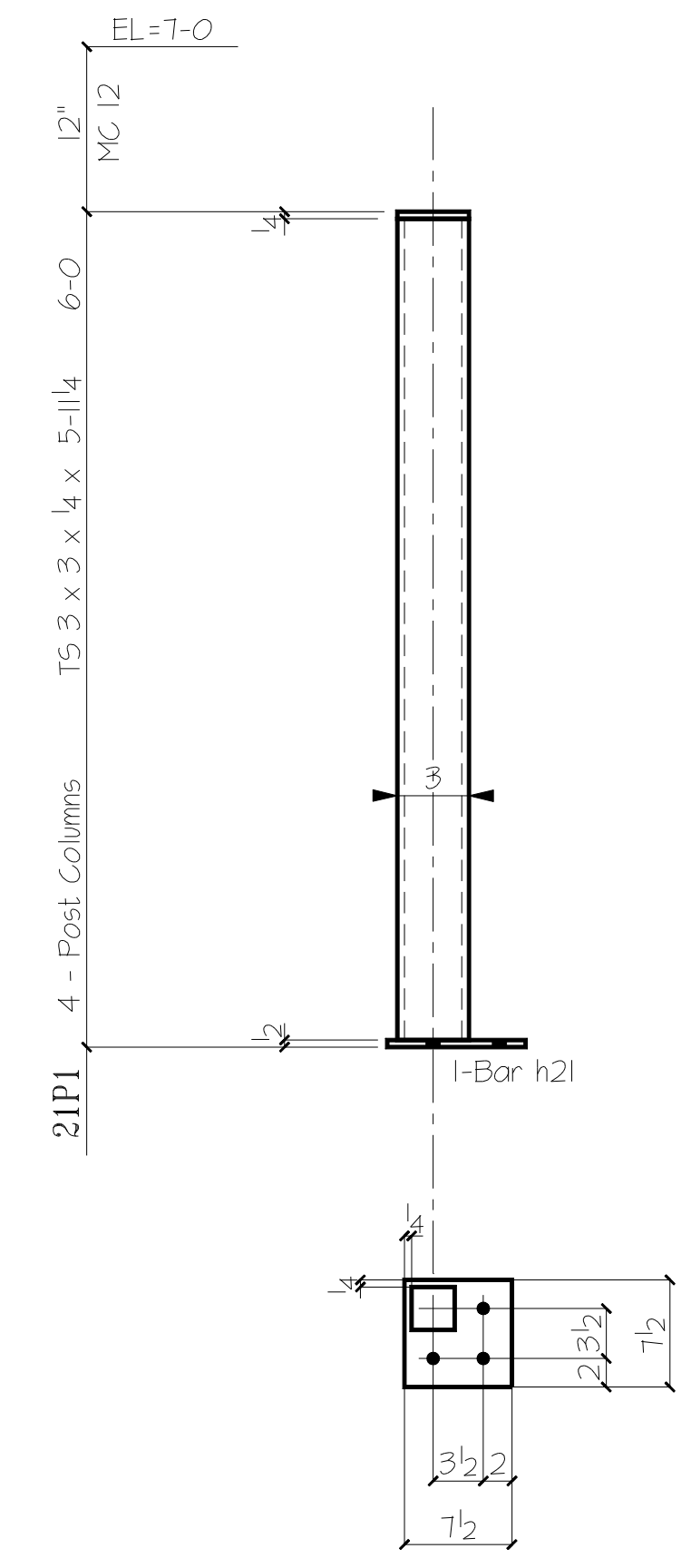
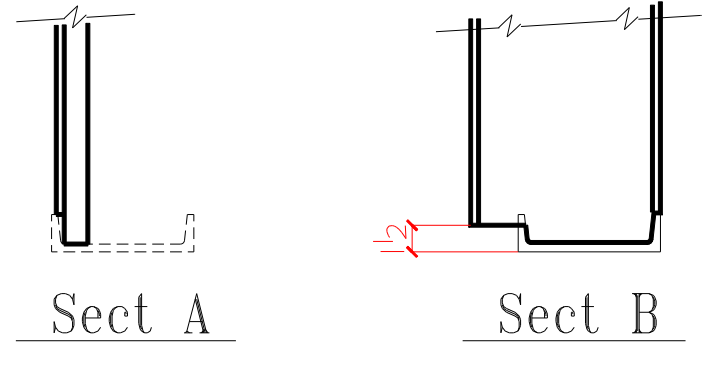
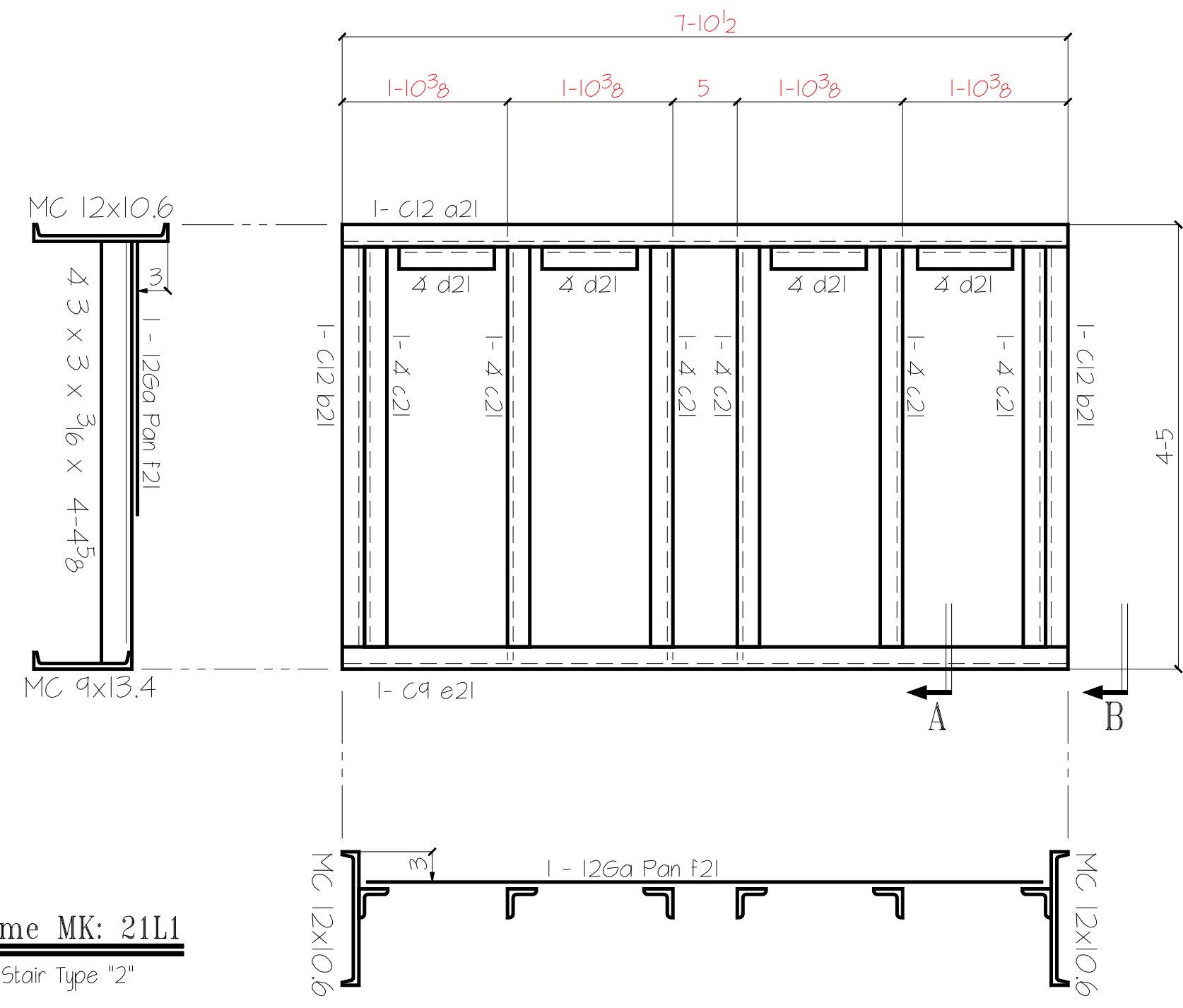
- BILL OF MATERIAL -						INSPECTION	
SHIP MK	TEMP MK	QTY	DESCRIPTION	LENGTH	REMARKS	WELDER	FINALE
17SW1		1	Stair Stringer				
	a20	1	MC 12 x 10.6	13-3 3/4	Miter		
	b20	1	MC 12 x 10.6	13-3 3/4	Miter		
	c20	2	Bar 1/4 x 1 1/4	0-8 1/4			
	d20	2	Bar 1/4 x 1 1/4	0-7 1/2			
	e20	2	Bar 1/4 x 1 1/4	0-5 1/4			
	e17	22	4 1 x 1 x 1/8	0-9 1/2			
20SW2		1	Stair Stringer				
	m20	1	MC 12 x 10.6	12-9 1/8	Miter		
	n20	1	MC 12 x 10.6	12-9 1/8	Miter		
	p20	2	Bar 1/4 x 1 1/4	0-5 1/2			
	r20	2	4 3 x 3 x 1/4	0-5 1/2			
	e17	22	4 1 x 1 x 1/8	0-9 1/2			

Useable Template Mark Letters
p q r s t u v w x y z
TSP FN: DaySpa_D3.dwg

- DESCRIPTION OF REVISIONS MADE TO DRAWING -			
1			
2			
3			
REVISION DESCRIPTION	DATE	MADE BY	CHK BY
REF DWG E2 & S2.2			

MATERIAL GRADE SHELL BE	A36	U.N.O.
WF SHAPES	A992	TUBES A500
CHANNELS	A992	PIPES A501 or A53
COATING	One S/C Red Oxide Primer	
13/16\"/>	1/4\"/>	E700XX
OPEN HOLE	FILLET	ELECTRODES
APPROVAL	TO SHOP	8-18-08
J&D Steel 4615 S Flores Road, Elmhurst Tx 210-621-0296 Fax 210-621-0943		
DETAILS OF Parts For Stair Type "2"		
CUSTOMER Crownhill Builders Inc		
ARCHITECT DHR Durand Hollis Rupe		
PROJECT Whispering Waters Day Spa		
LOCATION 13111 Hubner Rd		
DETAIL DY	8-11-08	JOB #
CHK.R	MS 8-24-08	8007
		SHEET #
		D20

1 Landing Frame MK: 21L1
1 - Landing for Stair Type "2"



- BILL OF MATERIAL -						INSPECTION	
SHIP MK	TEMP MK	QTY	DESCRIPTION	LENGTH	REMARKS	WELDER	FINALE
21L1		1	Landing Frames				
	a2l	1	MC 12 x 10.6	7-10 1/2			
	b2l	2	MC 12 x 10.6	4-2 3/8			
	e2l	1	C 9 x 13.4	7-7 1/2			
	c2l	4	4 3 x 3 x 1/4	4-2 3/8			
	d2l	1	4 3 x 3 x 1/4	6-0	Trim As Need		
	f2l	1	10 Ga PL 4-3	7-5 1/2			
21P1		4	TS 3 x 3 x 1/4	5-11 1/4			
	h2l	4	Bar 1/2 x 7/2	0-7 1/2			

Useable Template Mark Letters
p p c d e l g h j k m n p q r s t v w x z
TSP FN: DaySpa_D3.dwg

- DESCRIPTION OF REVISIONS MADE TO DRAWING -			
1	Changed Per new Dims	DY 5-13-08	
2	Changes Per JD Checking	DY 6-19-08	
3			
	REVISION DESCRIPTION	DATE	MADE BY CHK BY SHOPED
REF DWG E2 & S2.2			

MATERIAL GRADE SHELL BE	A36	U.N.O.
WF SHAPES	A992	TUBES A500
CHANNELS	A992	PIPES A501 or A53
COATING One S/C Red Oxide Primer		
13/16"	1/4"	E700XX
OPEN HOLE	FILLET	ELECTRODES
APPROVAL _____ TO SHOP 7-18-08		

J&D Steel		4615 S Flores Road, Elmhurst Tx 210-621-0296 Fax 210-621-0943	
DETAILS OF Parts For Stair Type "2"			
CUSTOMER Crownhill Builders Inc			
ARCHITECT DHR Durand Hollis Rupe			
PROJECT Whispering Waters Day Spa			
LOCATION 13111 Huebner Rd			
DETAIL DY	8-5-08	JOB #	8007
CHK.R	MS 8-24-08	SHEET #	D21