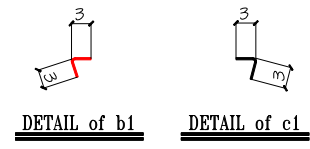
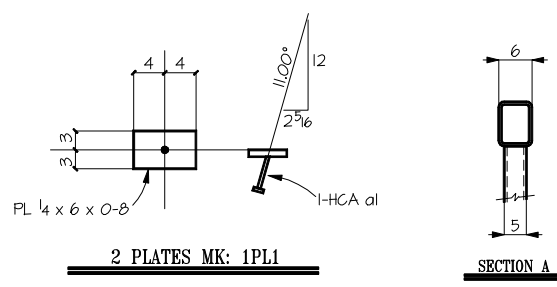
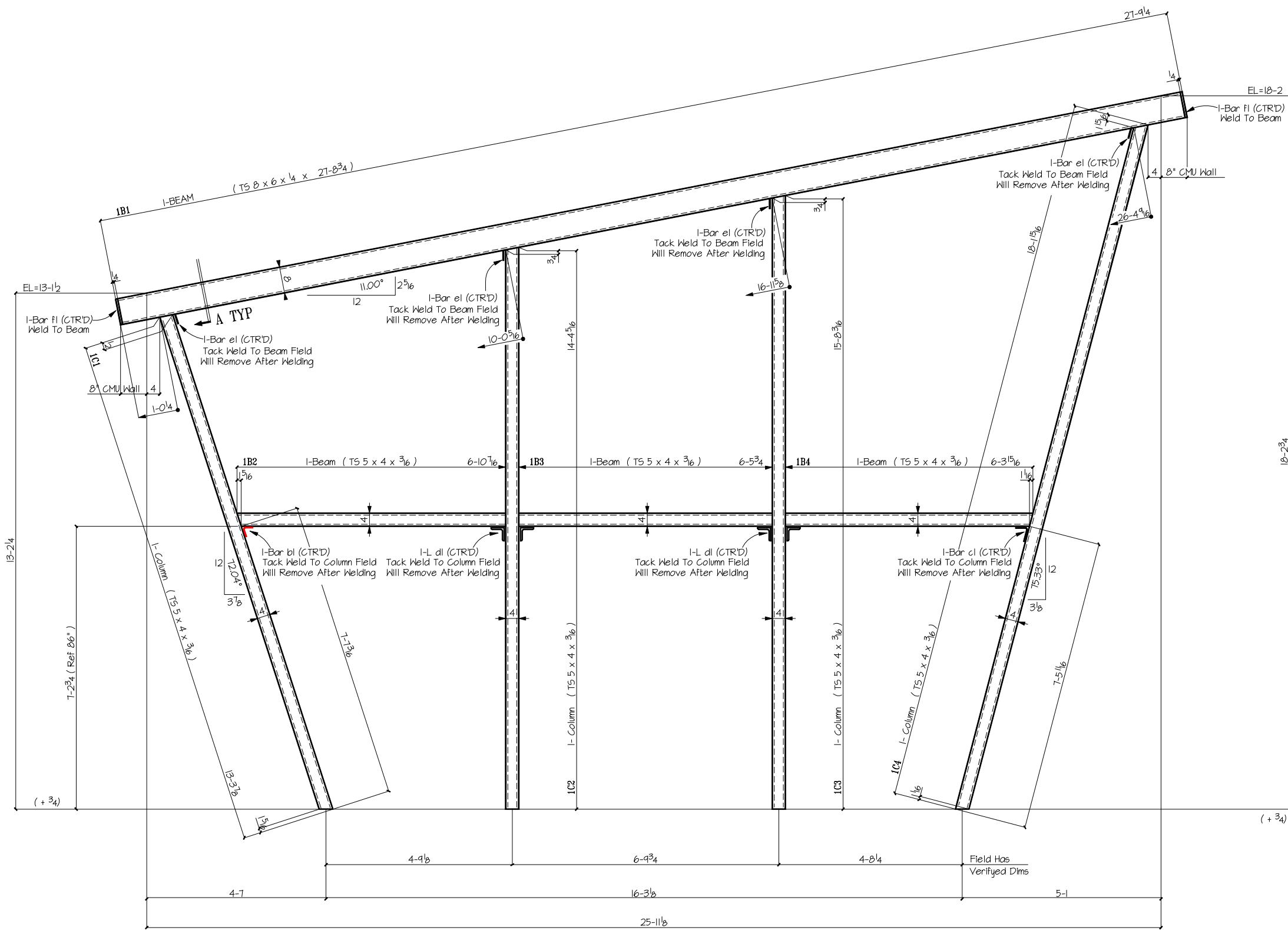


- BILL OF MATERIAL -

MARK	QTY	DESCRIPTION	LENGTH	REMARKS
IB1	1	TS 8 x 6 x 1/4	27-8 3/4	
el	4	Bar 1/4 x 3	0-5	
fl	2	Bar 1/4 x 6	0-8	
IB2	1	TS 5 x 4 x 3/16	6-10 1/16	
IB3	1	TS 5 x 4 x 3/16	6-5 3/4	
IB4	1	TS 5 x 4 x 3/16	6-3 15/16	
IC1	1	TS 5 x 4 x 3/16	13-3 1/8	
bl	1	Bar 1/4 x 6	0-5	
IC2	1	TS 5 x 4 x 3/16	14-4 5/16	
dl	1	L 3 x 3 x 4	0-5	
IC3	1	TS 5 x 4 x 3/16	15-8 3/16	
dl	1	L 3 x 3 x 4	0-5	
IC4	1	TS 5 x 4 x 3/16	18-1 15/16	
cl	1	Bar 1/4 x 6	0-5	
IPL1	2	BAR 1/4 x 6	0-8	
al	2	HCA 3/4"φ	0-6	



- UNLESS NOTED OTHERWISE -

None	FIELD WELD
OPEN HOLES	ELECTRODES
COATING One S/C Red Oxide Primer	
MATERIAL GRADE SHELL BE	A36 U.N.O.
WF SHAPES	TUBES A500 Gr. B
CHANNELS	PIPES
REF DWG	3.1 & 6.1 & 6.2

- PRINT RECORD -		- DESCRIPTION OF REVISIONS MADE TO DRAWING -	
APP'V		1	
SHOP		2	
FIELD		3	

TSD TEXAS STEEL DETAILERS
Specializing in Miscellaneous Steel Detailing
Email us @ TSD-5A@Mail.EVI.Net

FABRICATOR	L5 Steel
DETAILS OF PROJECT	Window Frame
PROJECT	Young Stone
LOCATION	101 Nakoma Drive S.A. T.X
CUSTOMER	Nick Klevenger
ARCHITECT	Charles William Pope
ENGINEER	Danysh & Associates
DETAIL BY	03-23-05
CHK.R	03-23-05
APP'V'D	
REV	
JOB #	008-05
DWG #	1