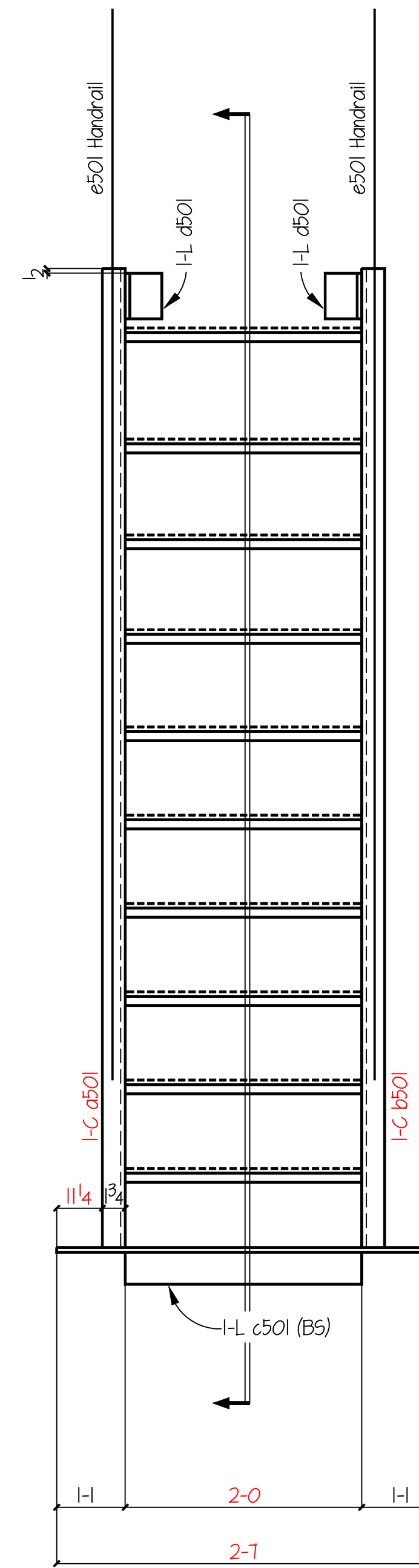
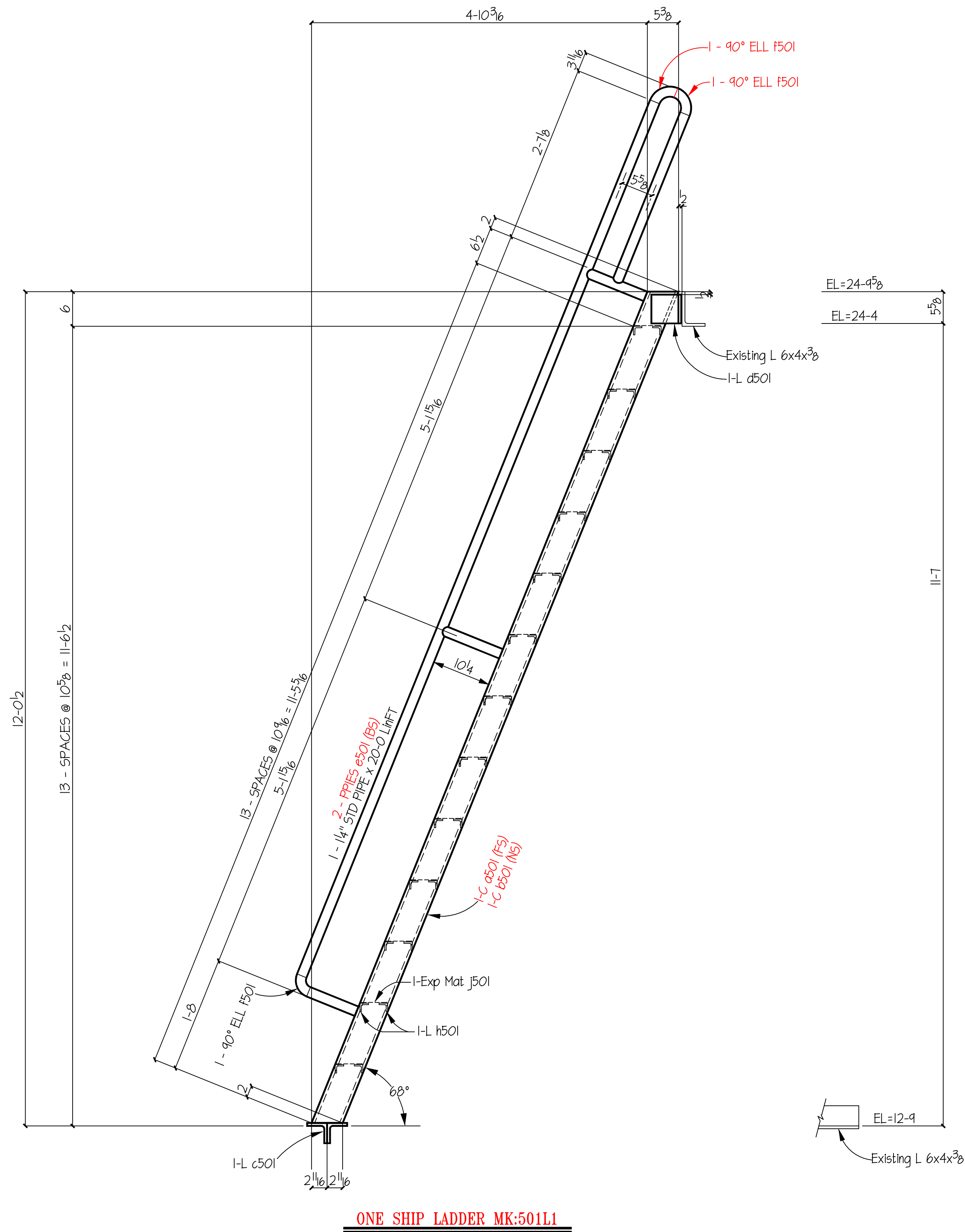


- BILL OF MATERIAL -

MARK	QTY	DESCRIPTION	LENGTH	REMARKS
501L1	1	SHIPS LADDER		
a501	1	C 5 x 6.7	12-1 ³ / ₈	
b501	1	C 5 x 6.7	12-1 ³ / ₈	
c501	2	L 3 x 3 x 1/4	2-7	
d501	2	L 5 x 3 x 1/4	0-5	
e501	2	1/4" STD PIPE	20-0	
f501	6	1/4" PIPE ELLS, 90°	#268	2" Inside Radius
h501	26	L 1 x 1 x 1/8	2-0	
j501	13	Exp Mat 5"	2-0	



HANDRAIL NOTES:

1. All Handrail Components Supplied by R & B Wagner.
2. All Welds & Sheared Edges To Be Grinded Smooth.
- 3.

ENGINEER TO VERIFY ALL DIMENSIONS & FRAMING

- UNLESS NOTED OTHERWISE -

None ϕ	ET0XX
OPEN HOLES	ELECTRODES
COATING One 5/C Red Oxide Primer	
MATERIAL GRADE SHELL BE	A36 U.N.O.
WF SHAPES	TUBES
CHANNELS	PIPES
REF DWG	E501, E502, A2/12 THU A2/14

TSD TEXAS STEEL DETAILERS Specializing In Miscellaneous Steel Detailing Email us @ TSD-SA@Mail.EVI.Net	
FABRICATOR	LS Steel
DETAILS OF	SHIP LADDER @ NORTH CATWALK
PROJECT	COMMUNITY BIBLE CHURCH
LOCATION	SAN ANTONIO TX
CUSTOMER	CF JORDAN, L.P.
ARCHITECT	RVK
ENGINEER	LUNDY & FRANKE
DETAIL	DY 10-01-04 APPV'D
CHK.R	66
REV #	
JOB #	042-03
DWG #	501

APPV'L	DESCRIPTION OF REVISIONS MADE TO DRAWING
10-01-04	1
SHOP	2
FIELD	3