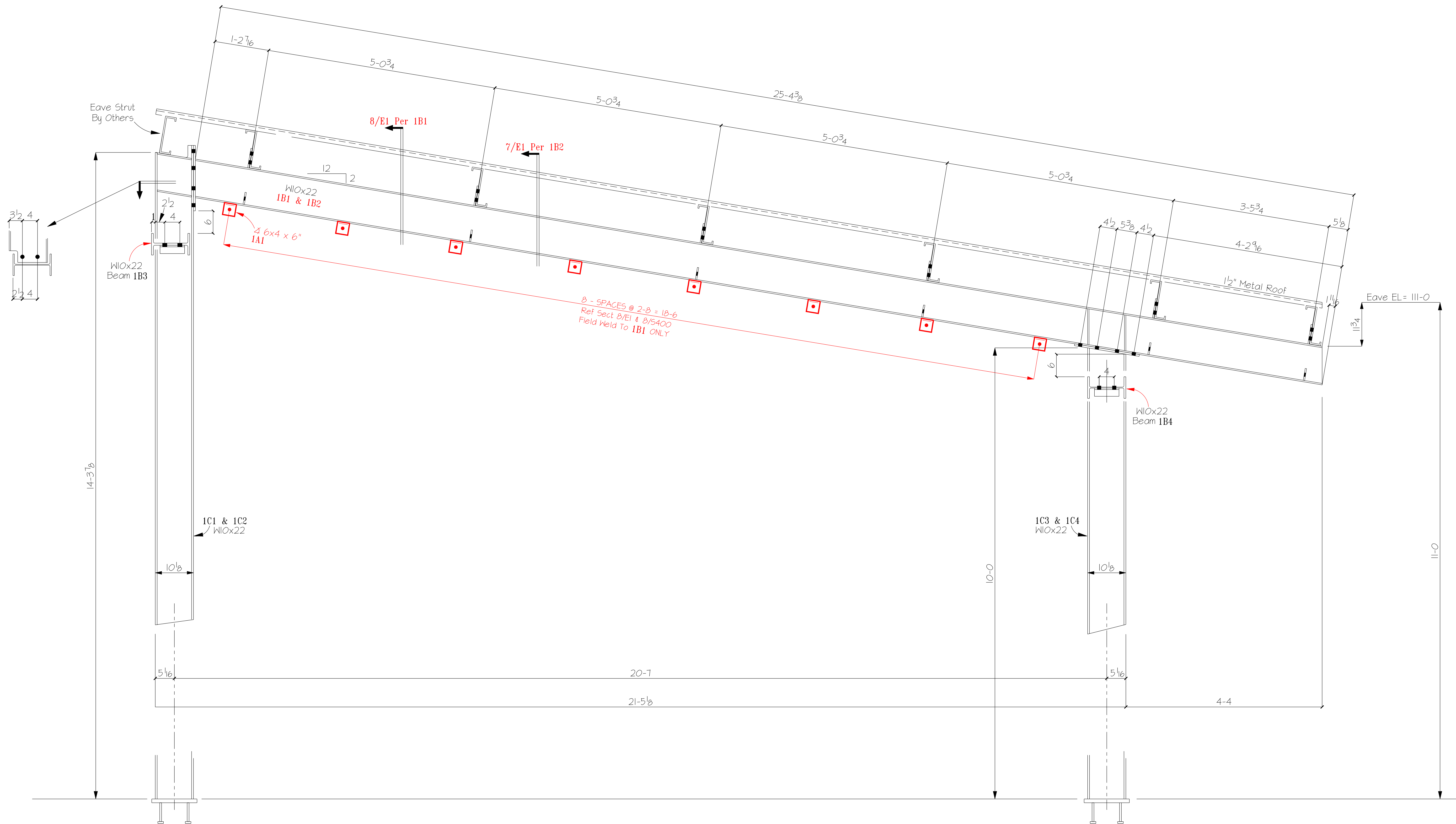


MATERIAL GRADE	SHELL BE	A36	U.N.O.	UNC Steel
WF SHAPES	A992	TUBES	A500 Gr B	
CHANNELS	A992	PIPES	A53 Gr B	
COATING	One S/C Red Oxide Primer			
OPEN HOLE	13/16"	FILLETs	1/4"	E70xx
APPROVAL	3-1-10	TO SHOP	3-9-10	
DETAIL D6 2-2-10				JOB #
CHK.R tsd 3-9-10				JuvePro
				SHEET #
				E1

FN= Juve-Pro.dwg



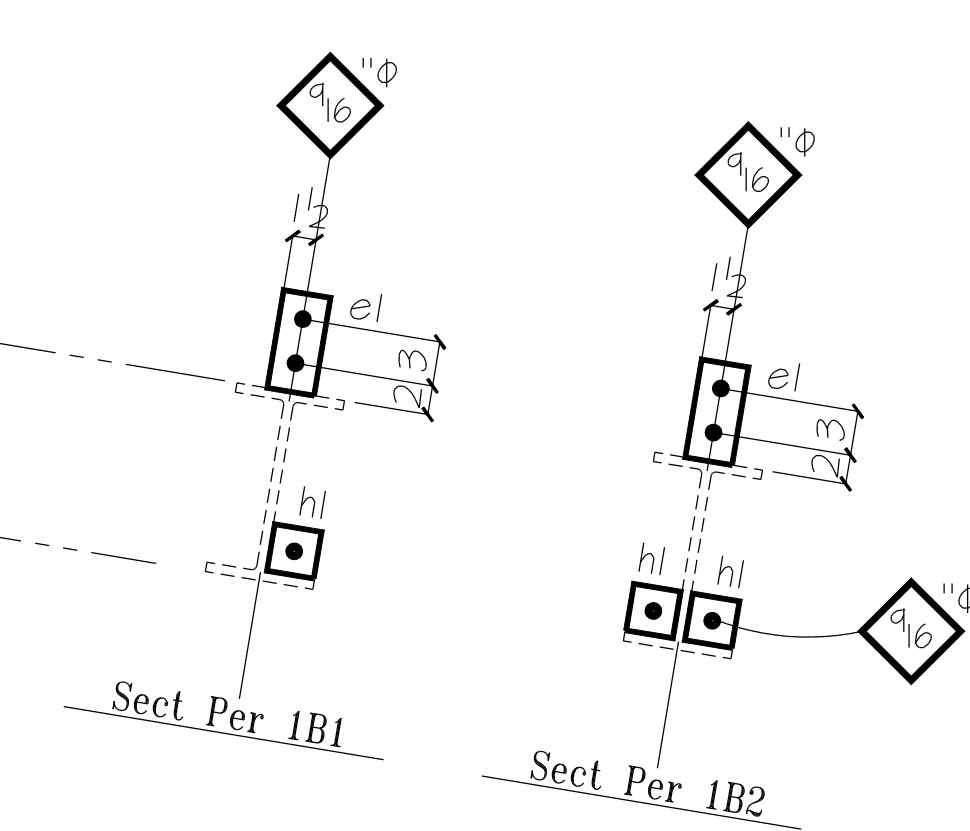
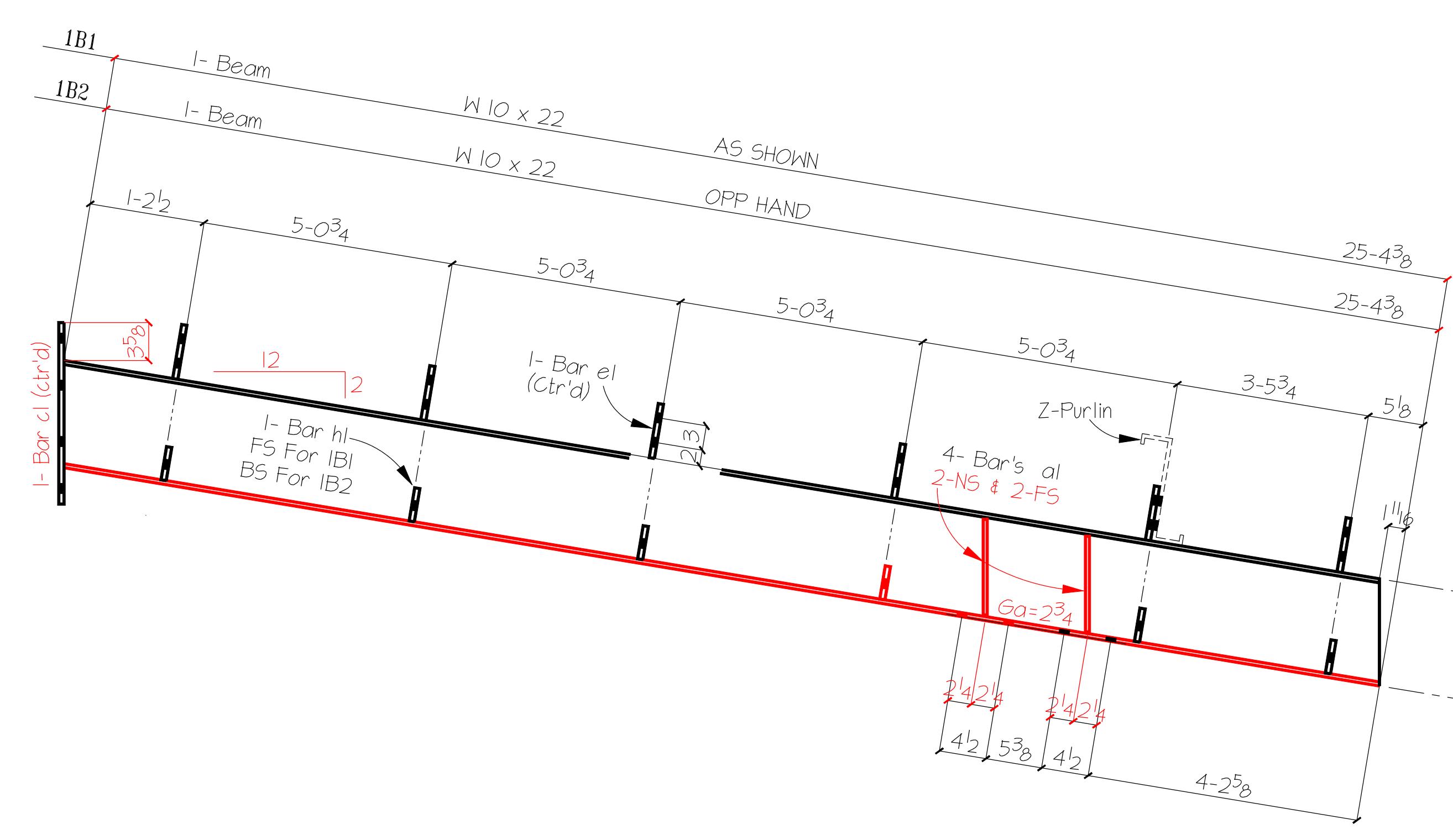
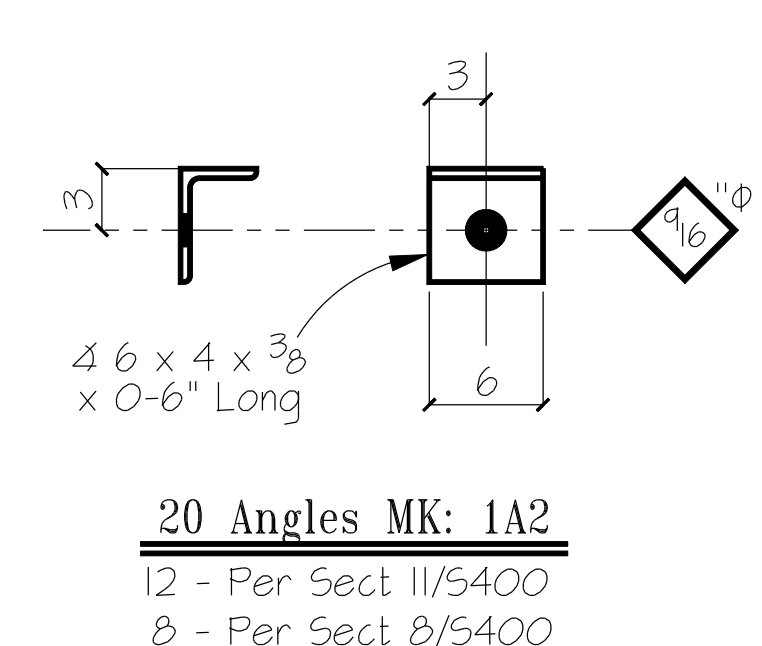
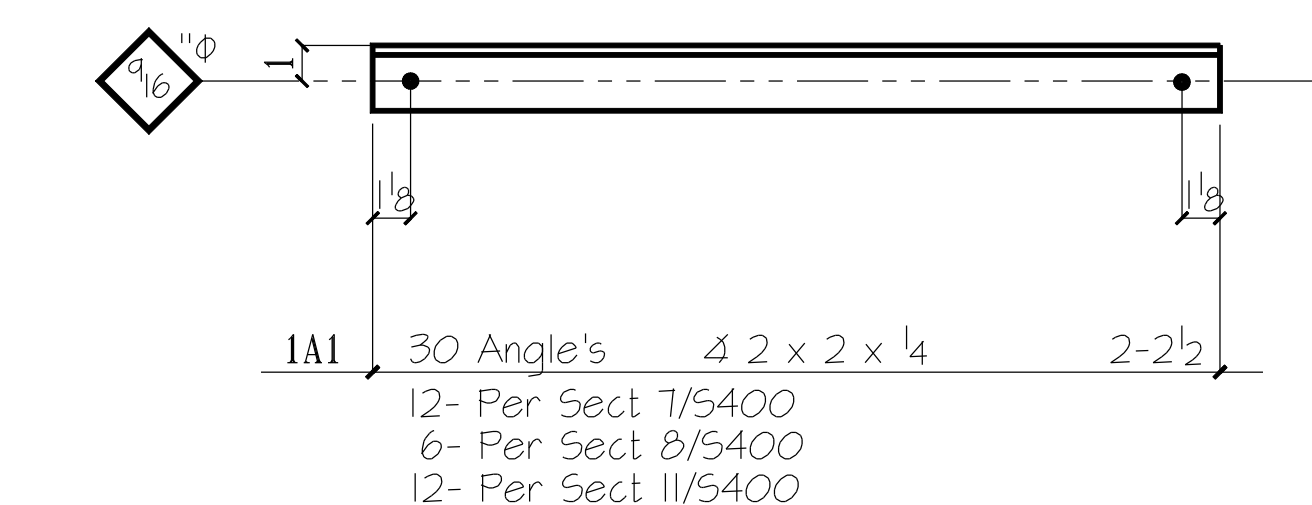
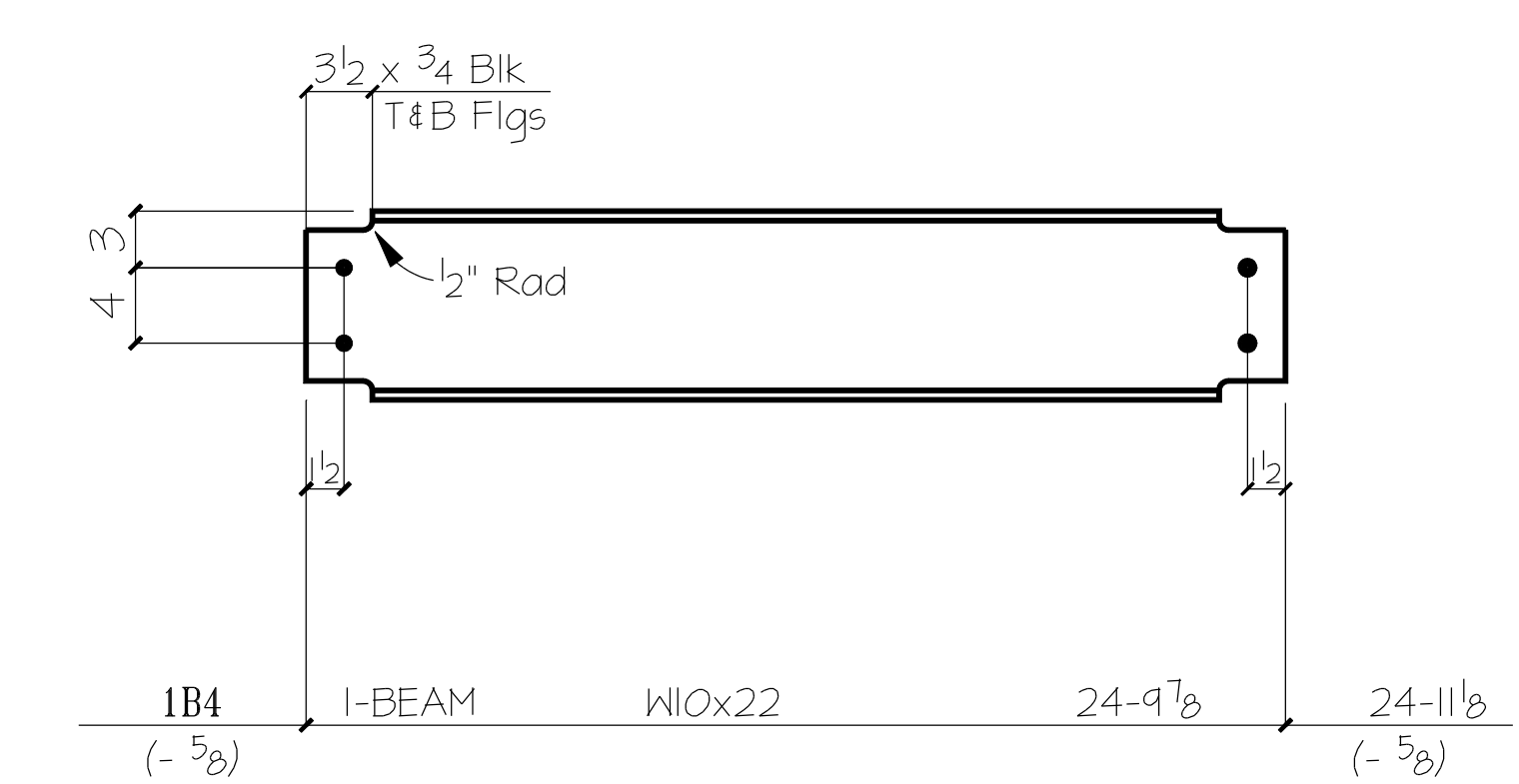
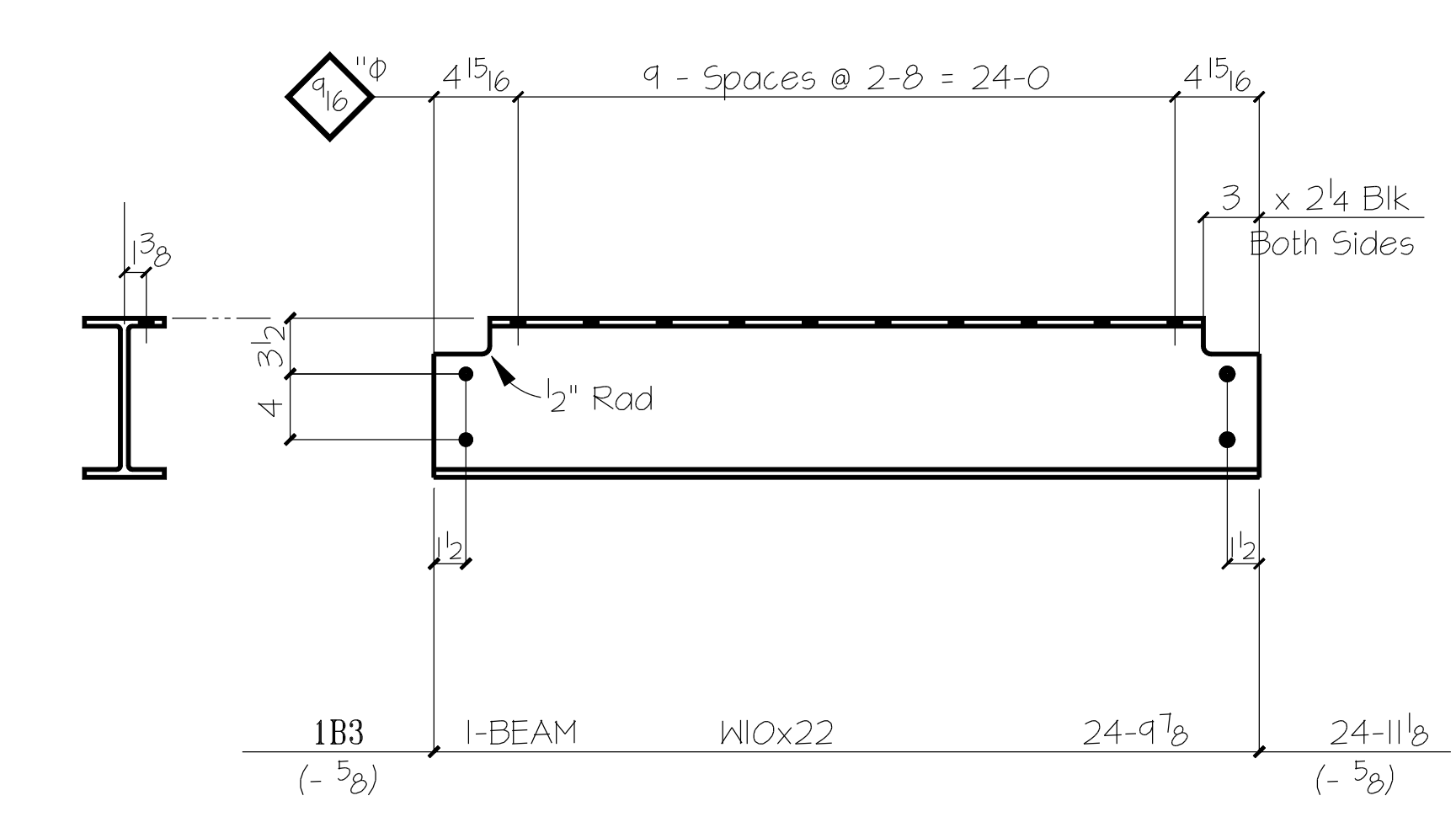
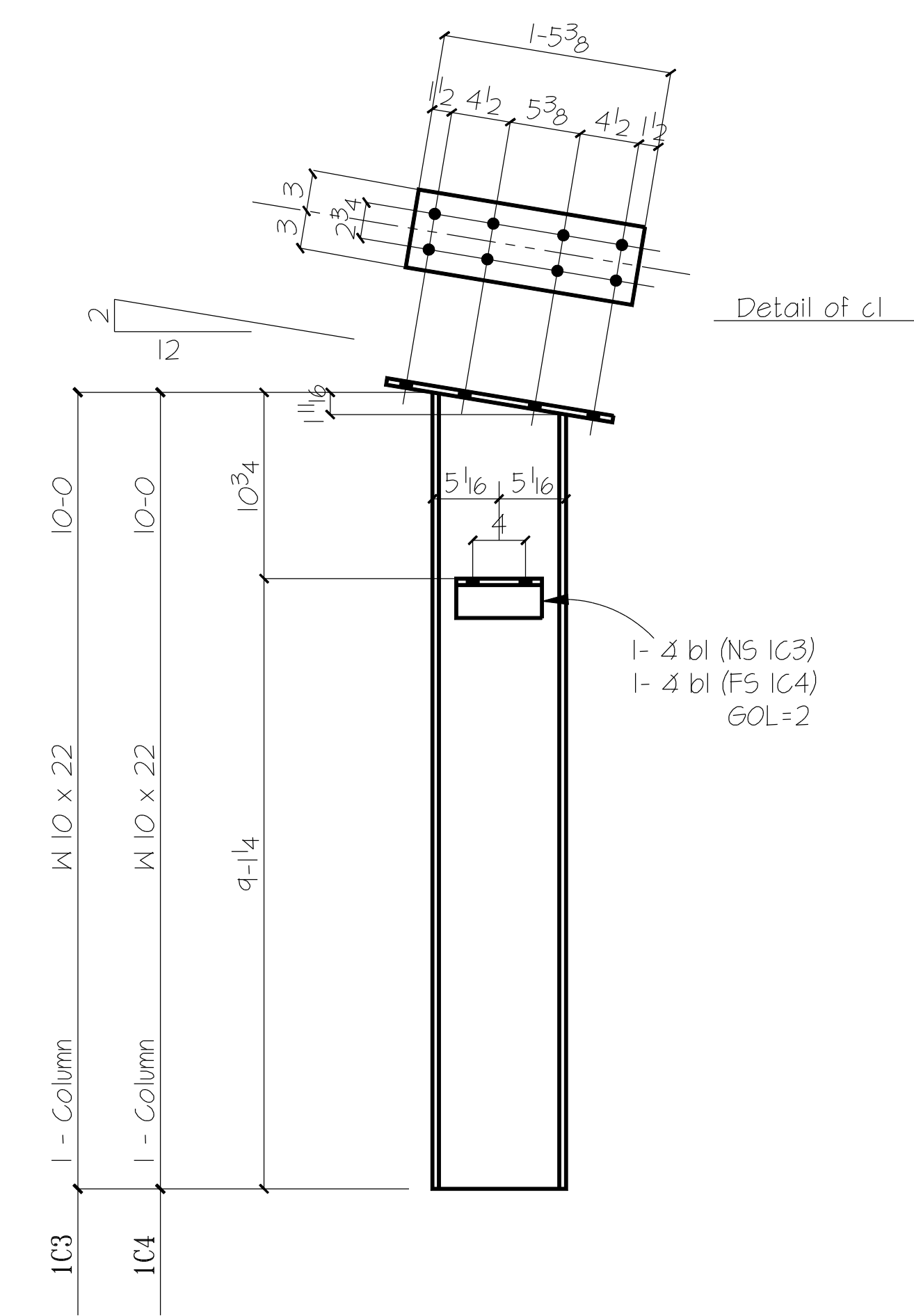
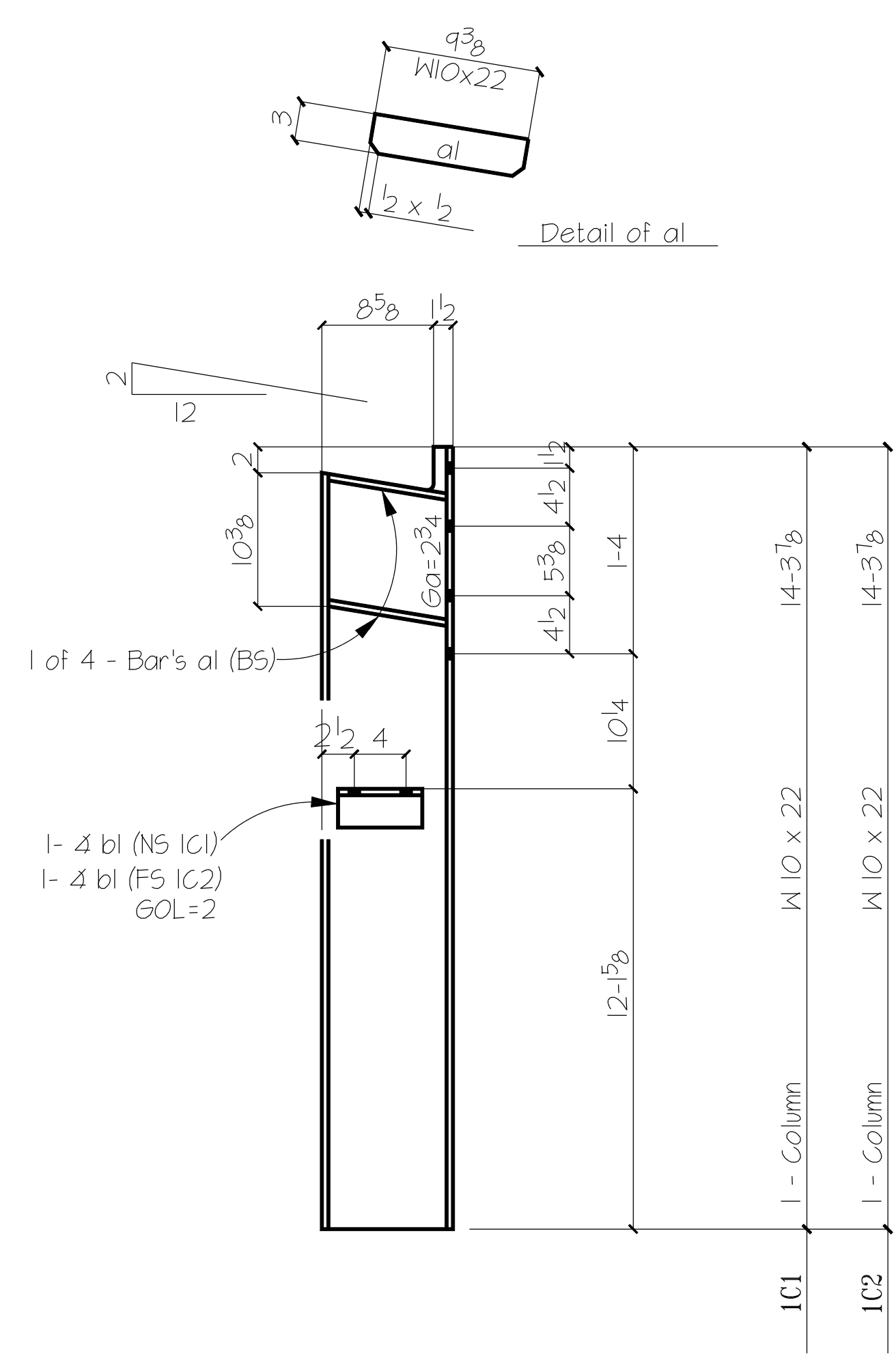
Sect MS/E2
Sect 9 & 3,5,6 /S400

FN= Juve-Pro.dwg

MATERIAL GRADE SHELL BE	A36	U.N.O.	UNC Steel	
WF SHAPES	A992	TUBES		A500 Gr B
CHANNELS	A992	PIPES		A53 Gr B
COATING	One S/C Red Oxide Primer			
OPEN HOLE	13/16"φ	FILLETs	1/4" E70xx	
APPROVAL	3-1-10	TO SHOP	3-9-10	
DETAIL D6 2-2-10			JOB #	
CHK.R	tsd	3-9-10	JuvePro	
SHEET #			E2	

BILL OF MATERIAL

MARK	QTY	DESCRIPTION	LENGTH	REMARKS
IC1	1	W 10 x 22	14-3 ⁷ / ₈	
al	4	Bar 3 ⁸ / ₈ x 3	0-9 ³ / ₈	
bl	1	4 4 x 4 x 3 ⁸ / ₈	0-6 ¹ / ₂	
IC2	1	W 10 x 22	14-3 ⁷ / ₈	
al	4	Bar 3 ⁸ / ₈ x 3	0-9 ³ / ₈	
bl	1	4 4 x 4 x 3 ⁸ / ₈	0-6 ¹ / ₂	
IC3	1	W 10 x 22	10-0	
cl	1	Bar 1 ² / ₂ x 6	1-5 ³ / ₈	
bl	1	4 4 x 4 x 3 ⁸ / ₈	0-6 ¹ / ₂	
IC4	1	W 10 x 22	10-0	
cl	1	Bar 1 ² / ₂ x 6	1-5 ³ / ₈	
bl	1	4 4 x 4 x 3 ⁸ / ₈	0-6 ¹ / ₂	
IB1	1	W 10 x 22	25-4 ³ / ₈	
al	4	Bar 3 ⁸ / ₈ x 3	0-9 ³ / ₈	
cl	1	Bar 1 ² / ₂ x 6	1-5 ³ / ₈	
hl	6	Bar 3 ⁸ / ₈ x 3	0-3	
el	1	Bar 3 ⁸ / ₈ x 3	0-7	
IB2	1	W 10 x 22	25-4 ³ / ₈	
al	4	Bar 3 ⁸ / ₈ x 3	0-9 ³ / ₈	
cl	1	Bar 1 ² / ₂ x 6	1-5 ³ / ₈	
hl	12	Bar 3 ⁸ / ₈ x 3	0-3	
el	1	Bar 3 ⁸ / ₈ x 3	0-7	
IB3	1	W 10 x 22	24-9 ⁷ / ₈	
IB4	1	W 10 x 22	24-9 ⁷ / ₈	
1A1	30	4 2 x 2 x 1 ⁴ / ₄	2-2 ¹ / ₂	
1A2	20	4 6 x 4 x 3 ⁸ / ₈	0-6	



MATERIAL GRADE SHELL BE	A36	U.N.O.	UNC Steel	
WF SHAPES	A992	TUBES		A500 Gr B
CHANNELS	A992	PIPES		A53 Gr B
COATING	One S/C Red Oxide Primer			
13/16" OPEN HOLE	1/4" FILLETS	E70xx ELECTRODES		
APPROVAL	3-1-10	TO SHOP	3-9-10	
DETAIL	D6	2-2-10	JOB #	
CHK.R	tsd	3-9-10	JuvePro	
			SHEET #	
			1	

DETAILS OF Columns & Beam

CUSTOMER _____

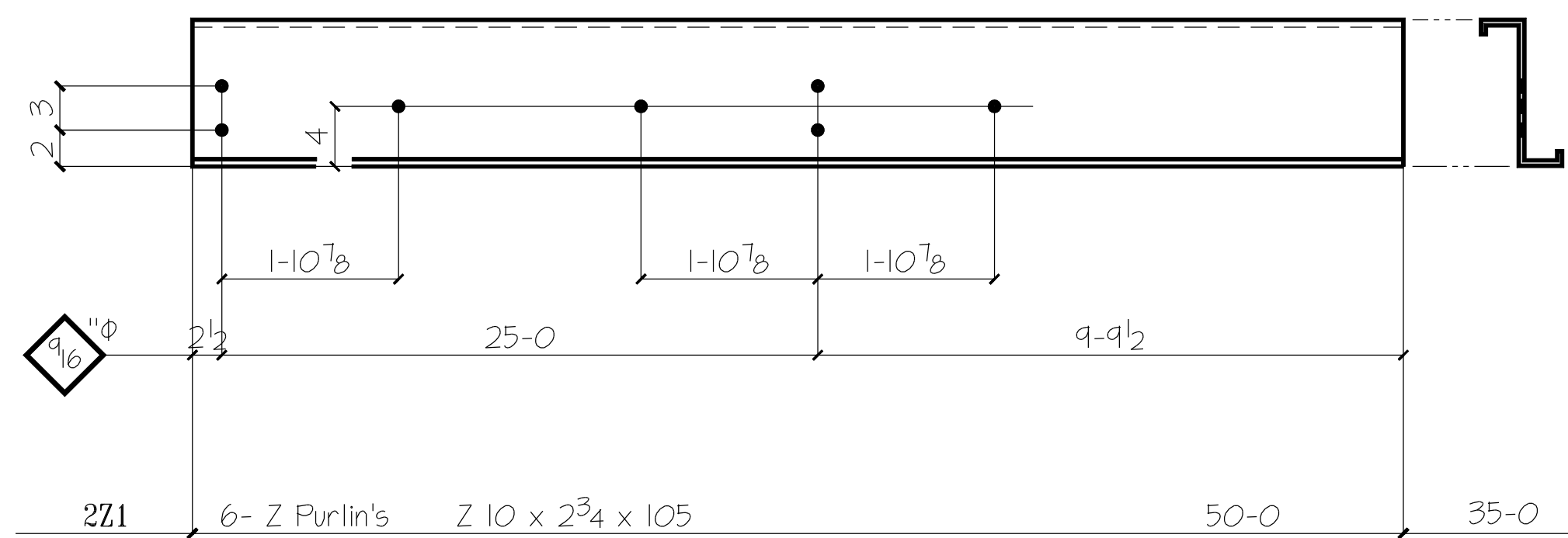
ARCHITECT _____

PROJECT **Juvenile Probation**

LOCATION _____

Useable Template Mark Letters: a-z, 0-9, #, %, &, ', (,), *, +, -, ., /, :, ;, <, >, =, , ~, ®, ±, ², ³, ´, µ, ¶, ·, ¸, ¹, º, », ¼, ½, ¾, ¿, À, Á, Â, Ã, Ä, Å, Æ, Ç, È, É, Ê, Ë, Ì, Í, Î, Ï, Ð, Ñ, Ò, Ó, Ô, Õ, Ö, ×, Ø, Ù, Ú, Û, Ü, Ý, Þ, ß, à, á, â, ã, ä, å, æ, ç, è, é, ê, ë, ì, í, î, ï, ð, ñ, ò, ó, ô, õ, ö, ÷, ø, ù, ú, û, ü, ý, þ, ÿ

FN= Juve-Pro.dwg



— BILL OF MATERIAL —

MARK	QTY	DESCRIPTION	LENGTH	REMARKS
2Z1	6	Z 10 x 2 ³ / ₄ x 105	50-0	
Plan Material				
2C1	10	C 8 x 16.6a	4-0	Note 5300
2A1	2	4 3 x 3 x 1/4	25-0	5,8,10 5400

Useable Template Mark Letters
 // a b c d e f g h j k m n p q r s t v w x y z //
 FN= Juve-Pro.dwg

MATERIAL GRADE SHELL BE <u>A36</u> U.N.O.	UNC Steel
WF SHAPES <u>A992</u> TUBES <u>A500 Gr B</u>	
CHANNELS <u>A992</u> PIPES <u>A53 Gr B</u>	DETAILS OF <u>Purlins</u>
COATING <u>One S/C Red Oxide Primer</u>	CUSTOMER _____
<u>9/16"φ</u> <u>1/4"</u> <u>E70xx</u>	ARCHITECT _____
OPEN HOLE FILLETS ELECTRODES	PROJECT <u>Juvenile Probation</u>
APPROVAL <u>3-1-10</u> TO SHOP <u>3-9-10</u>	LOCATION _____
	DETAIL <u>D6</u> <u>2-2-10</u>
	CHK.R <u>tsd</u> <u>3-9-10</u>
	JOB # _____
	JuvePro
	SHEET # 2