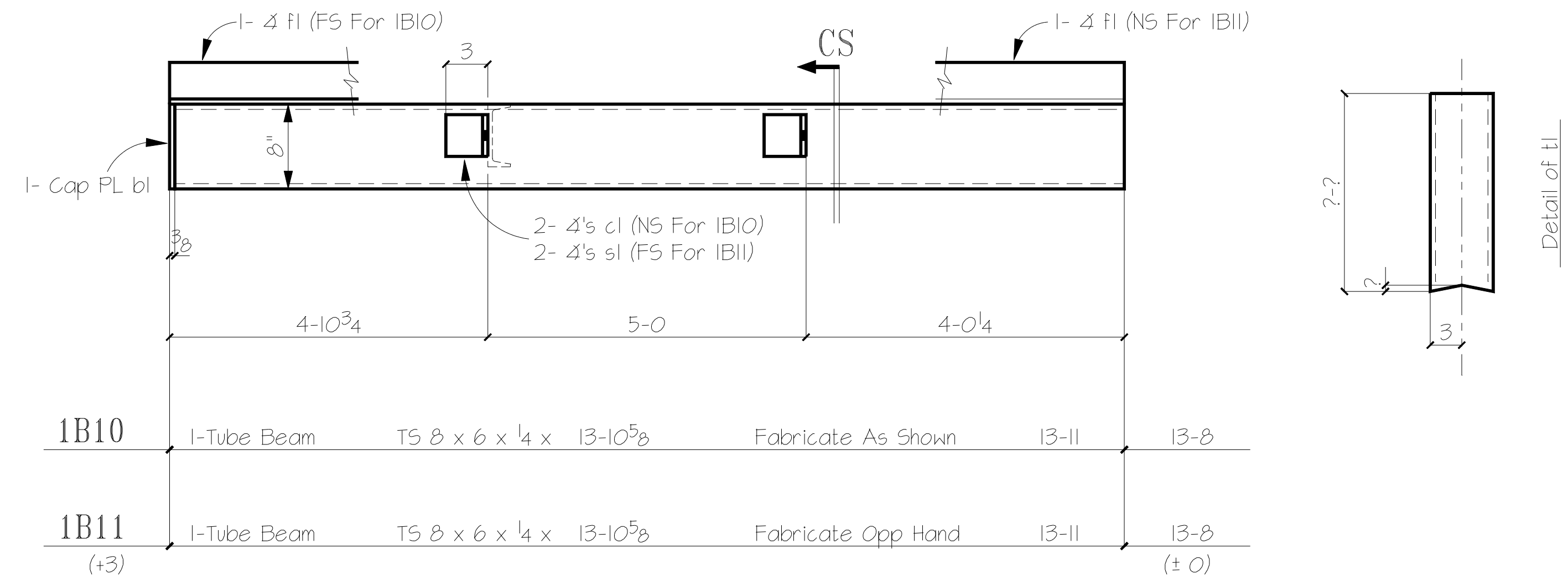
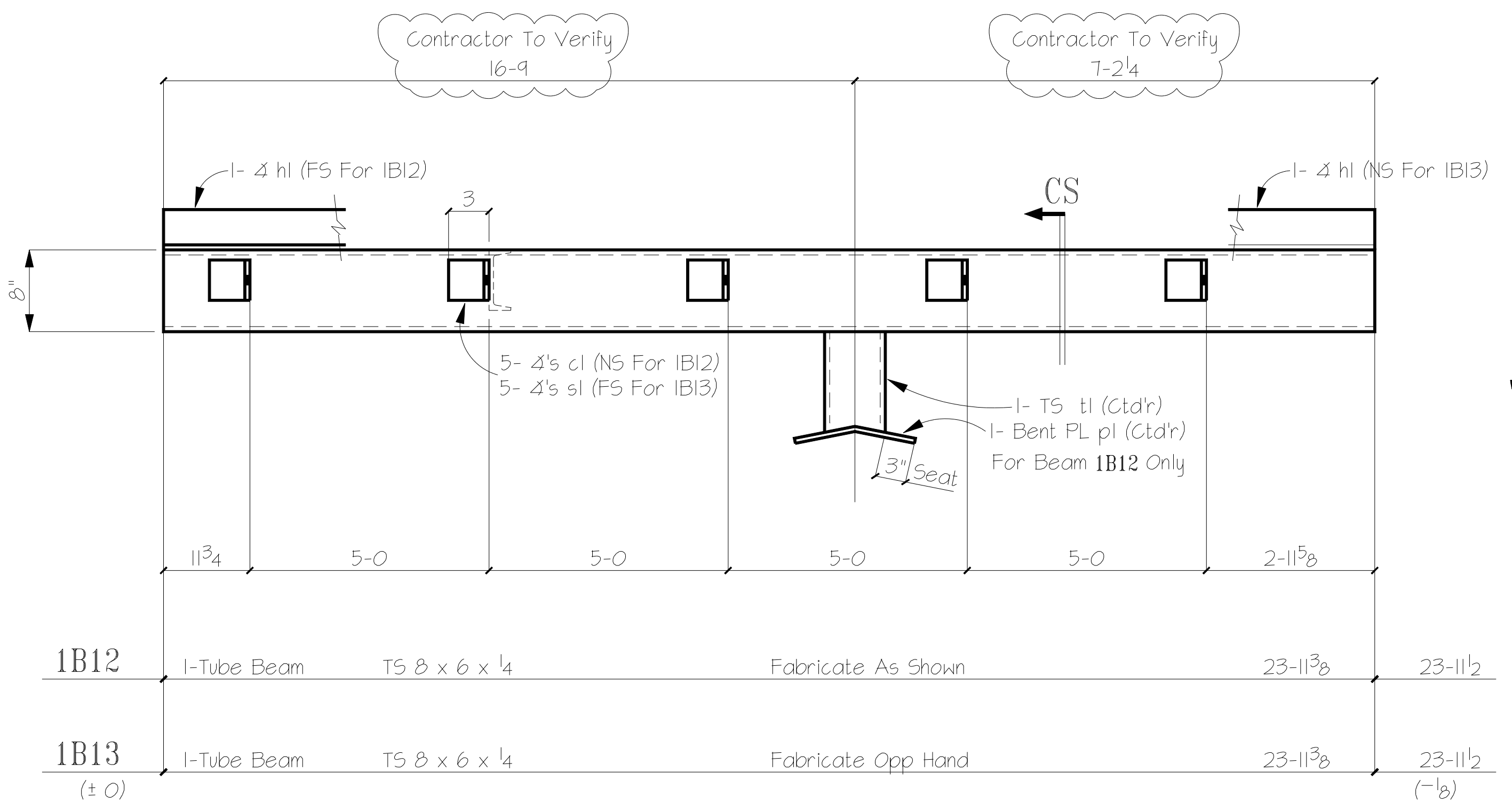


BILL OF MATERIAL

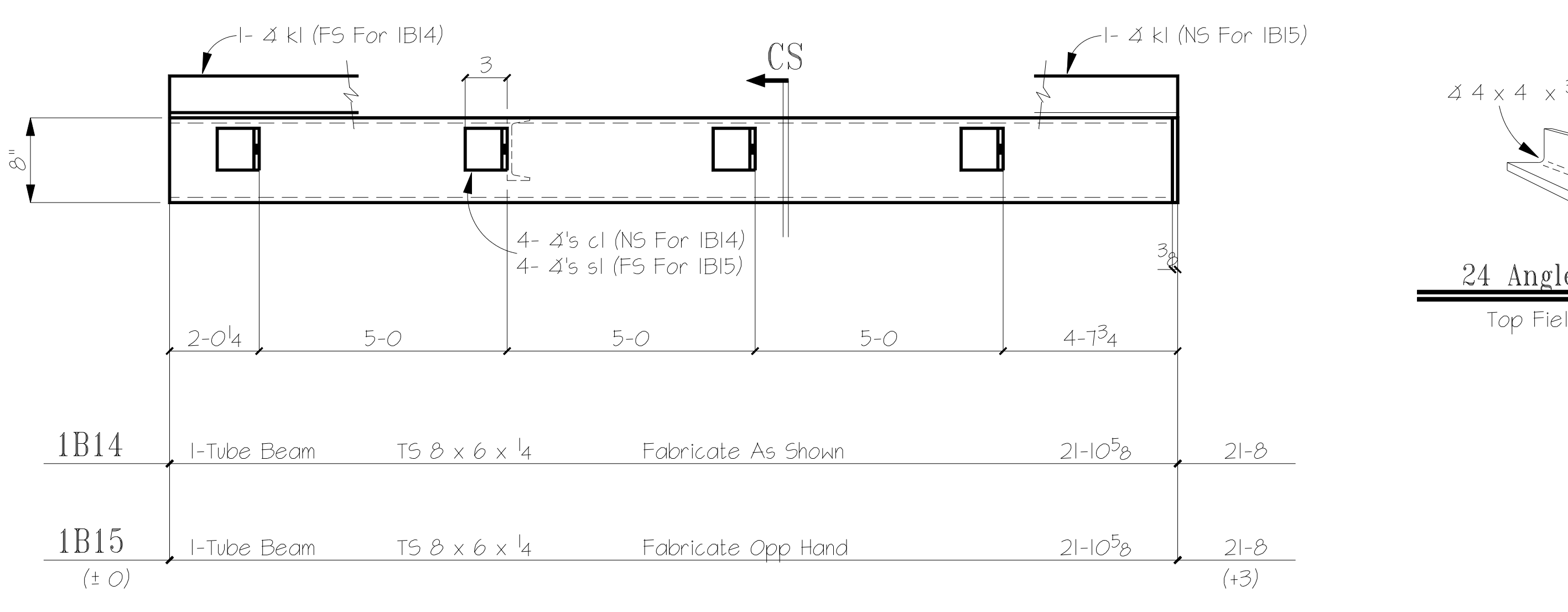
1B1	2-Tube Beam	T5 8 x 6 x 4	4-8½	5-3	
1B2	1-Tube Beam	T5 8 x 6 x 4	6-8½	7-3	6½
1B3	2-Tube Beam	T5 8 x 6 x 4	3-1½	3-8	
	(-3¼)			(-3¼)	



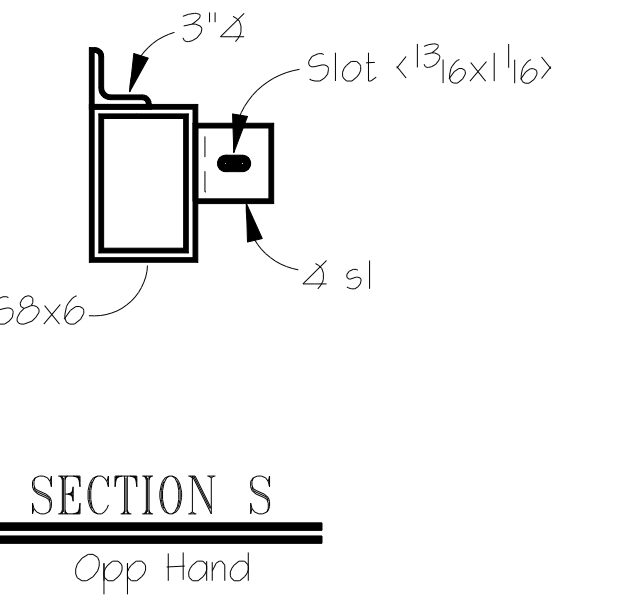
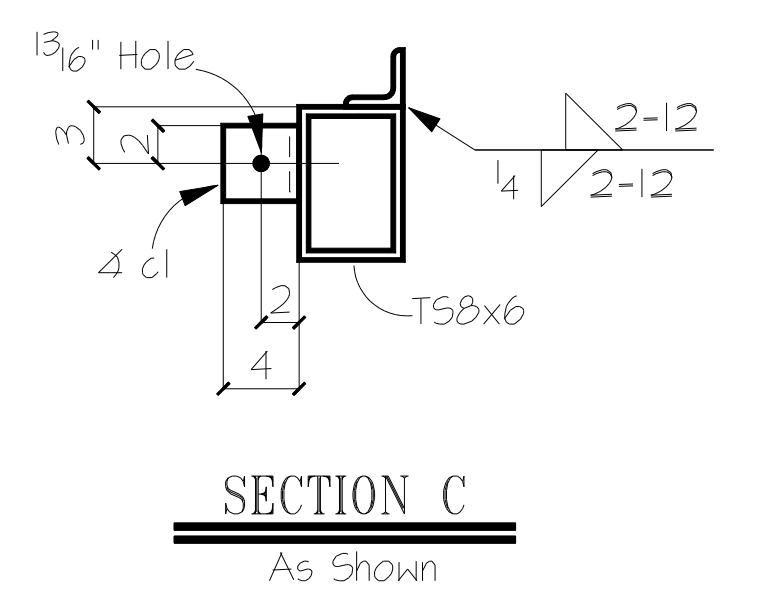
1B4	2-Tube Beam	T5 6 x 6 x 4	3-1½	3-8	
1B5	2-Tube Beam	T5 6 x 6 x 4	4-11½	5-6	6½
1B6	1-Tube Beam	T5 6 x 6 x 4	17-5½	18-0	
	(-3¼)			(-3¼)	



1B7	1-Tube Beam	T5 6 x 6 x 4	23-5	23-11½	
1B8	1-Tube Beam	T5 6 x 6 x 4	7-7½	8-2	
	(-3¼)			(-3¼)	



24 Angles MK: 1A1
Top Field Weld Clip



MARK	QTY	DESCRIPTION	LENGTH	REMARKS
1B1	2	T5 8 x 6 x 4	4-8½	
1B2	1	T5 8 x 6 x 4	6-8½	
1B3	2	T5 8 x 6 x 4	3-1½	
1B4	2	T5 6 x 6 x 4	3-1½	
1B5	2	T5 6 x 6 x 4	4-11½	
1B6	1	T5 6 x 6 x 4	17-5½	
1B7	1	T5 6 x 6 x 4	23-5	
1B8	1	T5 6 x 6 x 4	7-7½	
1B10	1	T5 8 x 6 x 4	13-11	
fl	1	4 3 x 3 x 3/16	13-11	
1B11	1	T5 8 x 6 x 4	13-11	
fl	1	4 3 x 3 x 3/16	13-11	
1B12	1	T5 8 x 6 x 4	23-11¾	
hl	1	4 3 x 3 x 3/16	23-11¾	
tl	1	T5 6 x 6 x 4	7-7	
pl	1	Bar 3/8 x 6½	1-0	
1B13	1	T5 8 x 6 x 4	23-11¾	
hl	1	4 3 x 3 x 3/16	23-11¾	
1B14	1	T5 8 x 6 x 4	21-10¾	
kl	1	4 3 x 3 x 3/16	21-10¾	
1B15	1	T5 8 x 6 x 4	21-10¾	
kl	1	4 3 x 3 x 3/16	21-10¾	
		For 1B10-1B15		
cl	11	4 4 x 3 x 1/4	0-4	With Holes
sl	11	4 4 x 3 x 1/4	0-4	With Slot

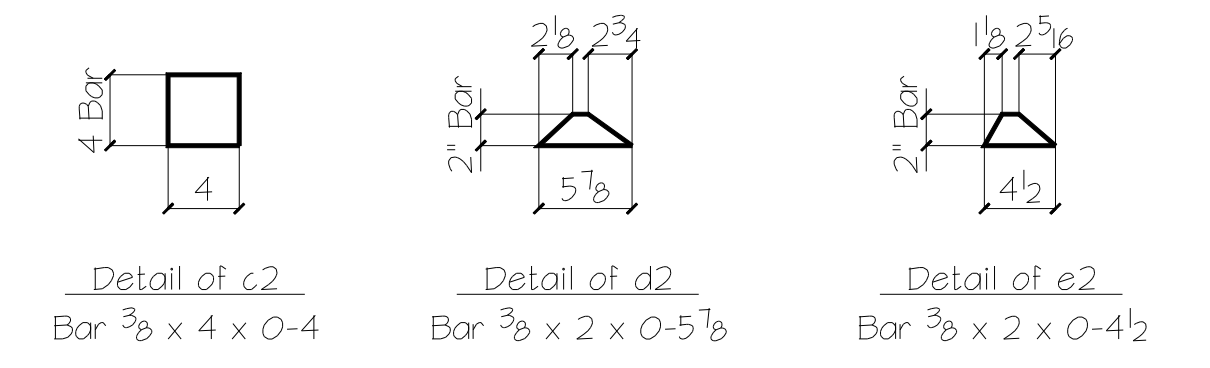
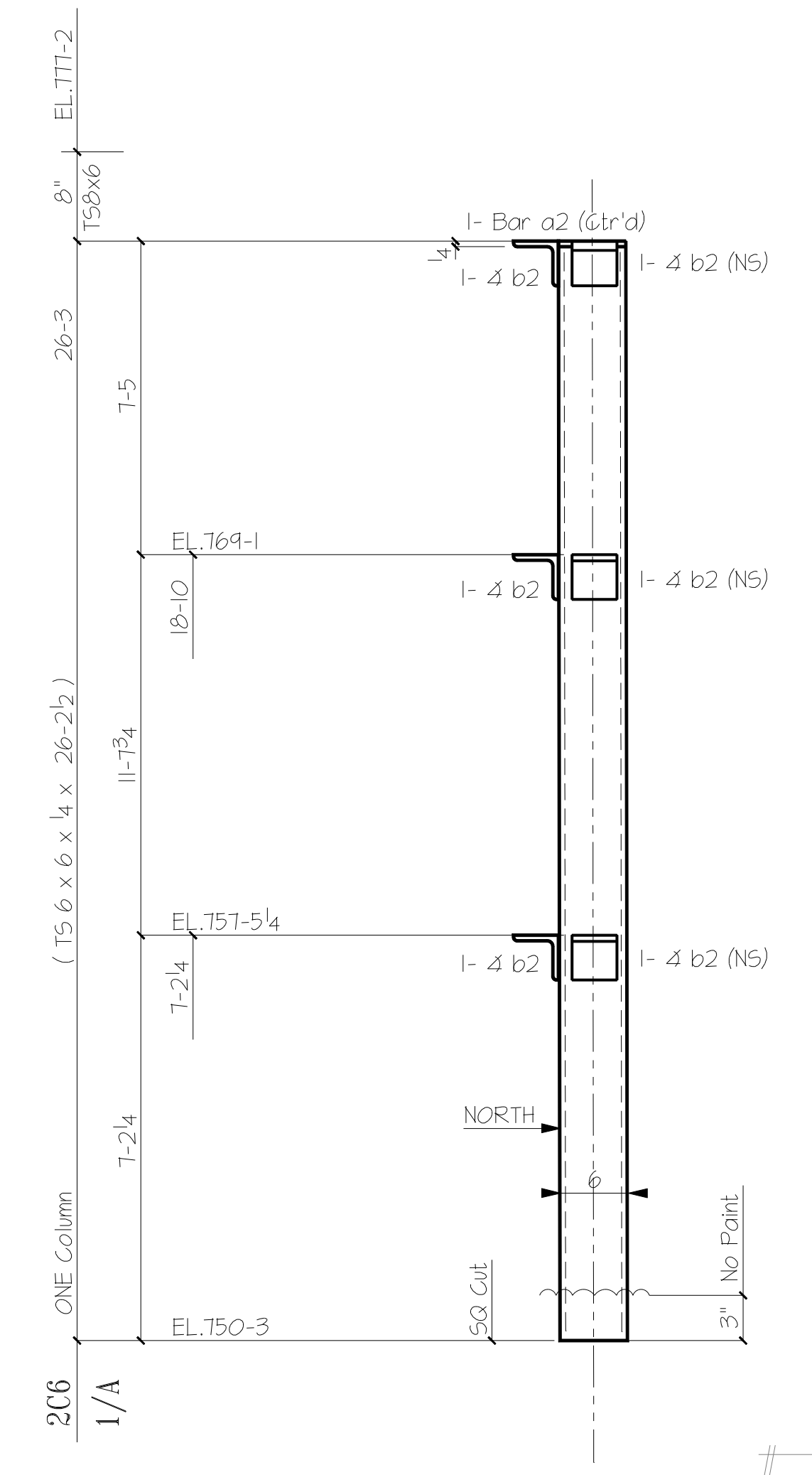
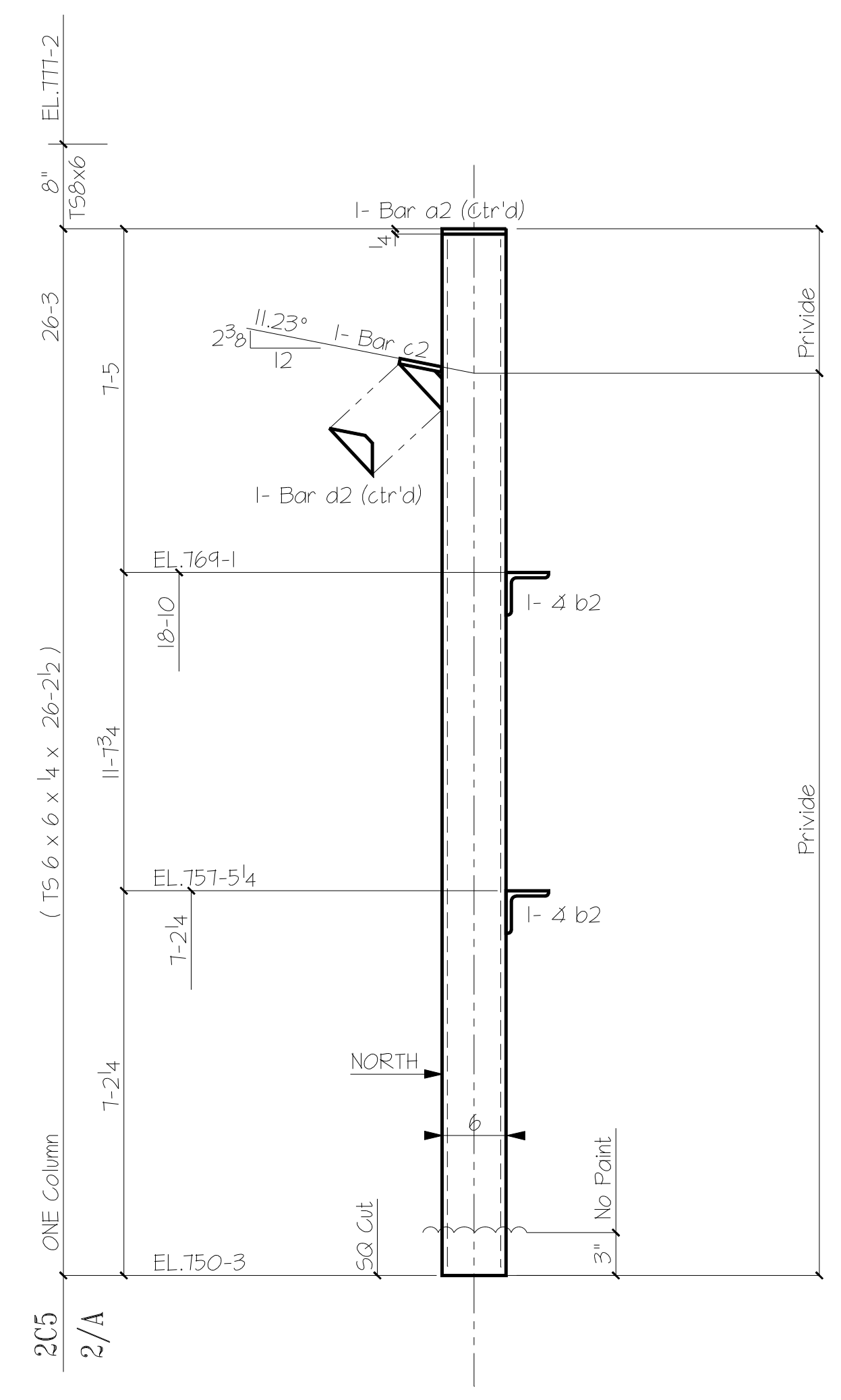
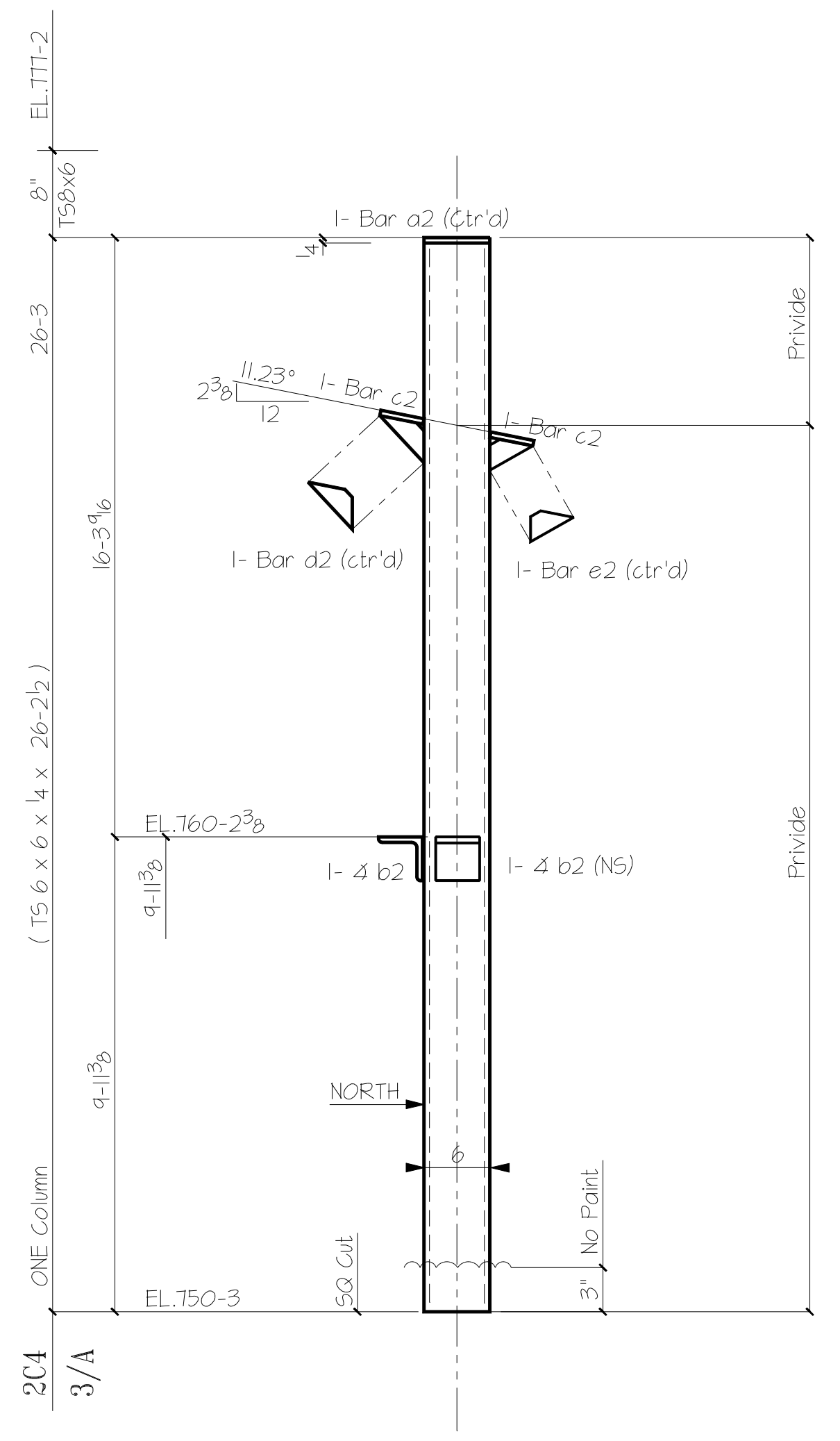
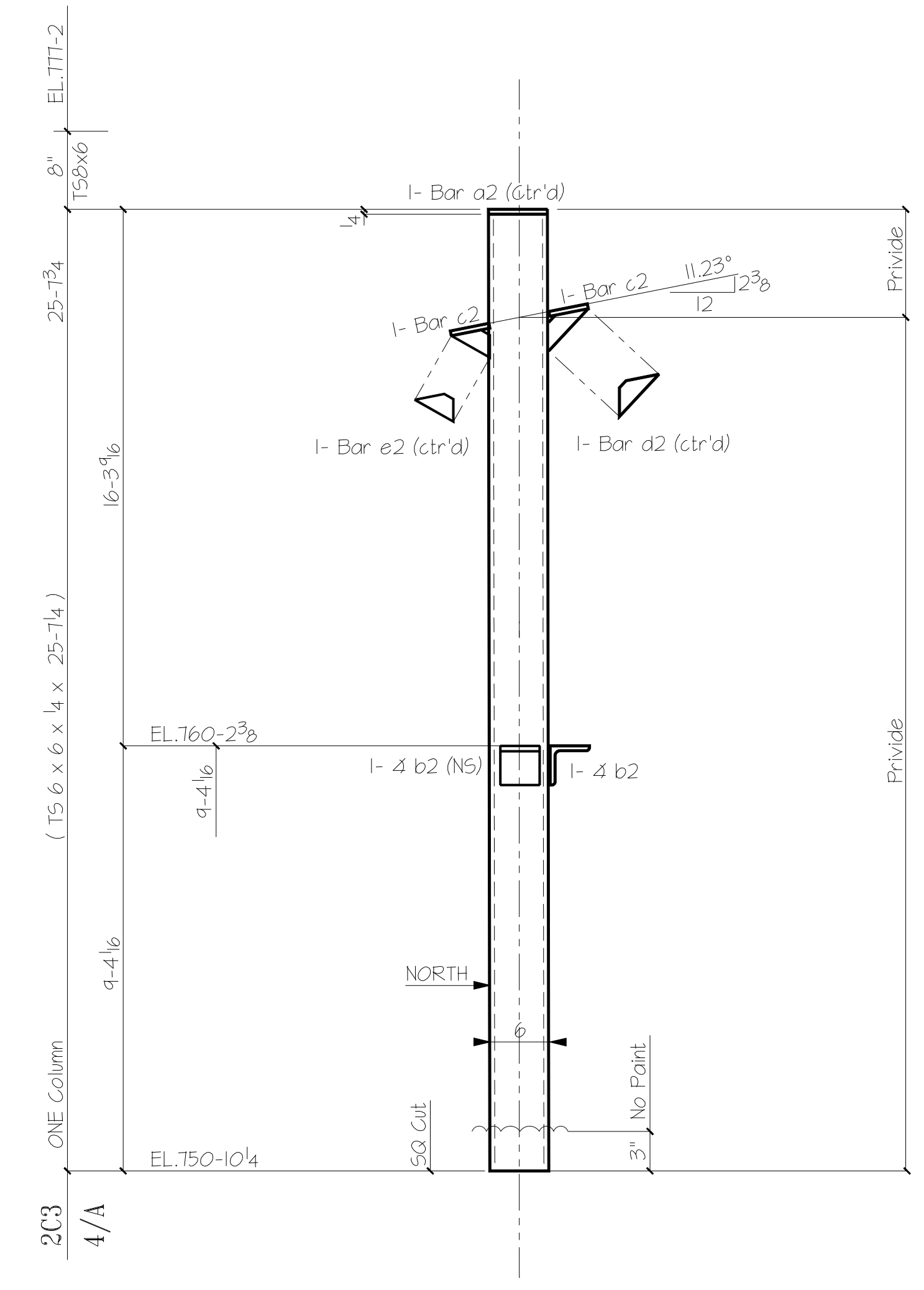
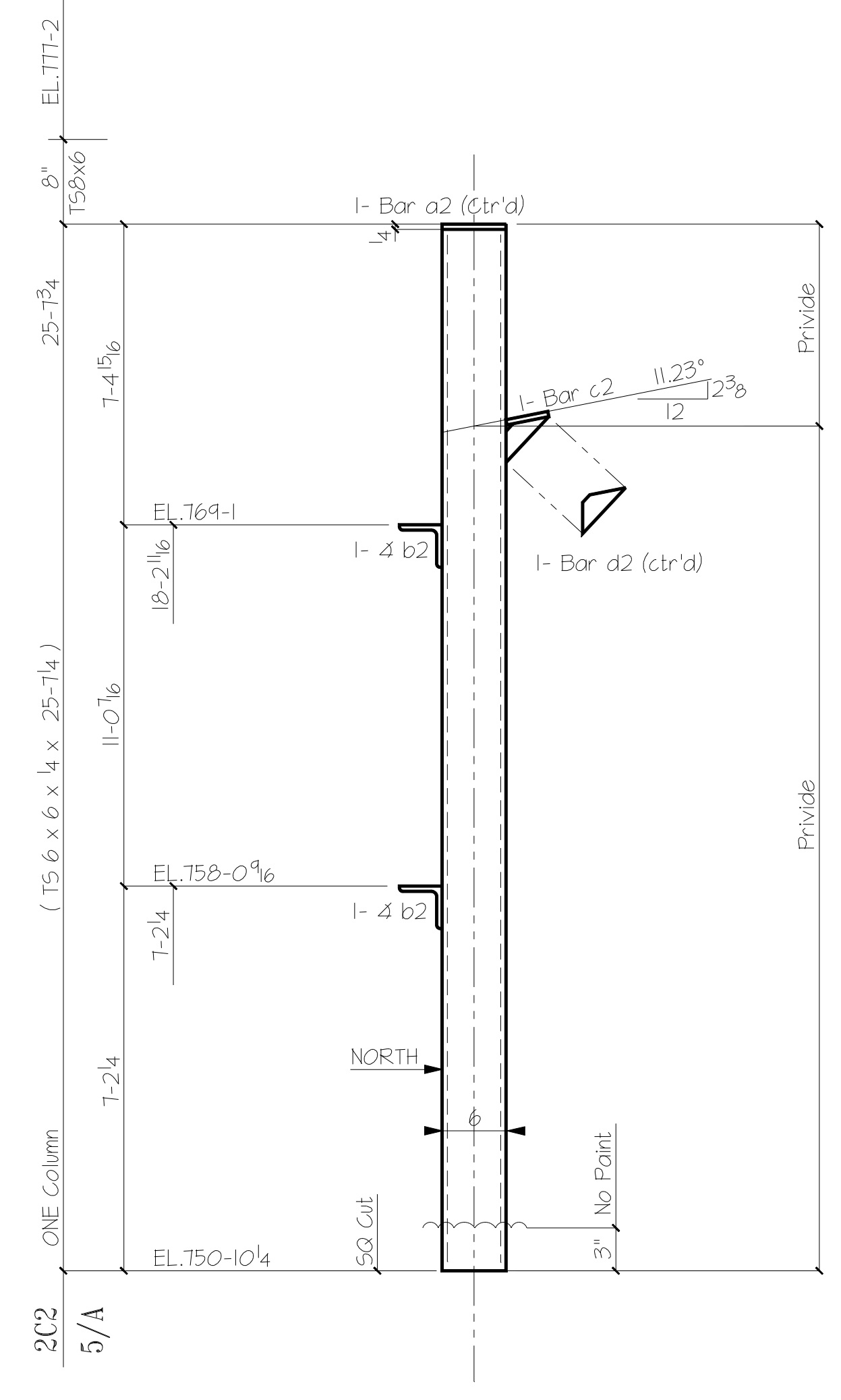
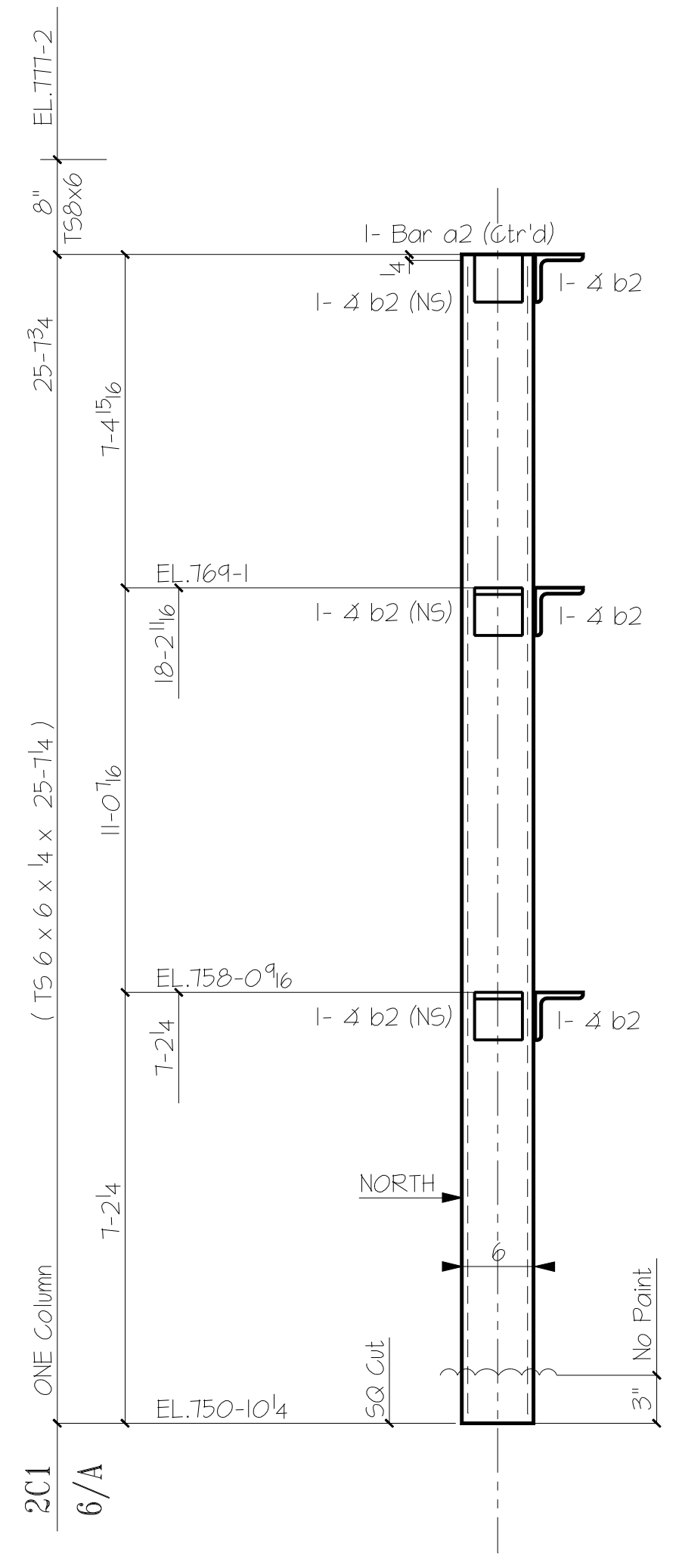
MATERIAL GRADE	SHELL BE	A36	U.N.O.
WF SHAPES	A992	TUBES	A500 Gr B
CHANNELS	A992	PIPES	A53 Gr B
COATING One S/C Red Oxide Primer			
13/16" Ø	1/4"	E70xx	
OPEN HOLE	FILLETs	ELECTRODES	
APPROVAL	?	TO SHOP	?

DETAIL	D6	12-14-09	JOB #	NEBC	SHEET #	1
CHK.R	?	?				

Useable Template Mark Letters
a b c d e f g h i j k l m n o p q r s t u v w x y z
FN= NEBC-Emis.dwg

- BILL OF MATERIAL -

MARK	QTY	DESCRIPTION	LENGTH	REMARKS
2C1	1	T5 6 x 6 x 1/4	25-7 3/4	SQ-Cut
a2	1	Bar 1/2 x 6	0-6	
b2	6	4 4 x 4 x 3/8	0-4	
2C2	1	T5 6 x 6 x 1/4	25-7 1/4	SQ-Cut
a2	1	Bar 1/2 x 6	0-6	
b2	2	4 4 x 4 x 3/8	0-4	
c2	1	Bar 3/8 x 4	0-4	
d2	1	Bar 3/8 x 2	0-5 1/8	
2C3	1	T5 6 x 6 x 1/4	25-7 1/4	SQ-Cut
a2	1	Bar 1/2 x 6	0-6	
b2	4	4 4 x 4 x 3/8	0-4	
c2	2	Bar 3/8 x 4	0-4	
d2	1	Bar 3/8 x 2	0-5 1/8	
e2	1	Bar 3/8 x 2	0-4 1/2	
2C4	1	T5 6 x 6 x 1/4	26-2 1/2	SQ-Cut
a2	1	Bar 1/2 x 6	0-6	
b2	2	4 4 x 4 x 3/8	0-4	
c2	1	Bar 3/8 x 4	0-4	
d2	1	Bar 3/8 x 2	0-5 1/8	
e2	1	Bar 3/8 x 2	0-4 1/2	
2C5	1	T5 6 x 6 x 1/4	26-2 1/2	SQ-Cut
a2	1	Bar 1/2 x 6	0-6	
b2	2	4 4 x 4 x 3/8	0-4	
c2	1	Bar 3/8 x 4	0-4	
d2	1	Bar 3/8 x 2	0-5 1/8	
e2	1	Bar 3/8 x 2	0-4 1/2	
2C6	1	T5 6 x 6 x 1/4	26-2 1/2	SQ-Cut
a2	1	Bar 1/2 x 6	0-6	
b2	6	4 4 x 4 x 3/8	0-4	



MATERIAL GRADE SHELL BE A36 U.N.O.
 WF SHAPES A992 TUBES A500 Gr B
 CHANNELS A992 PIPES A53 Gr B

COATING One S/C Red Oxide Primer

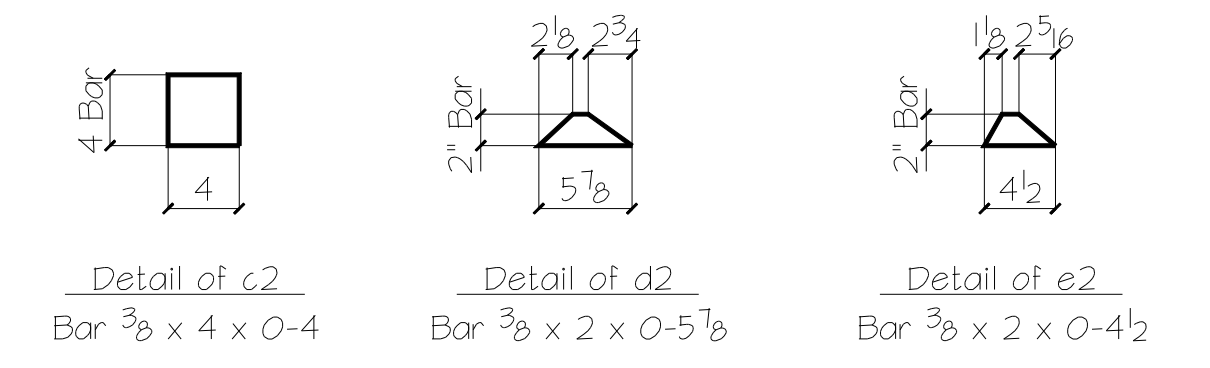
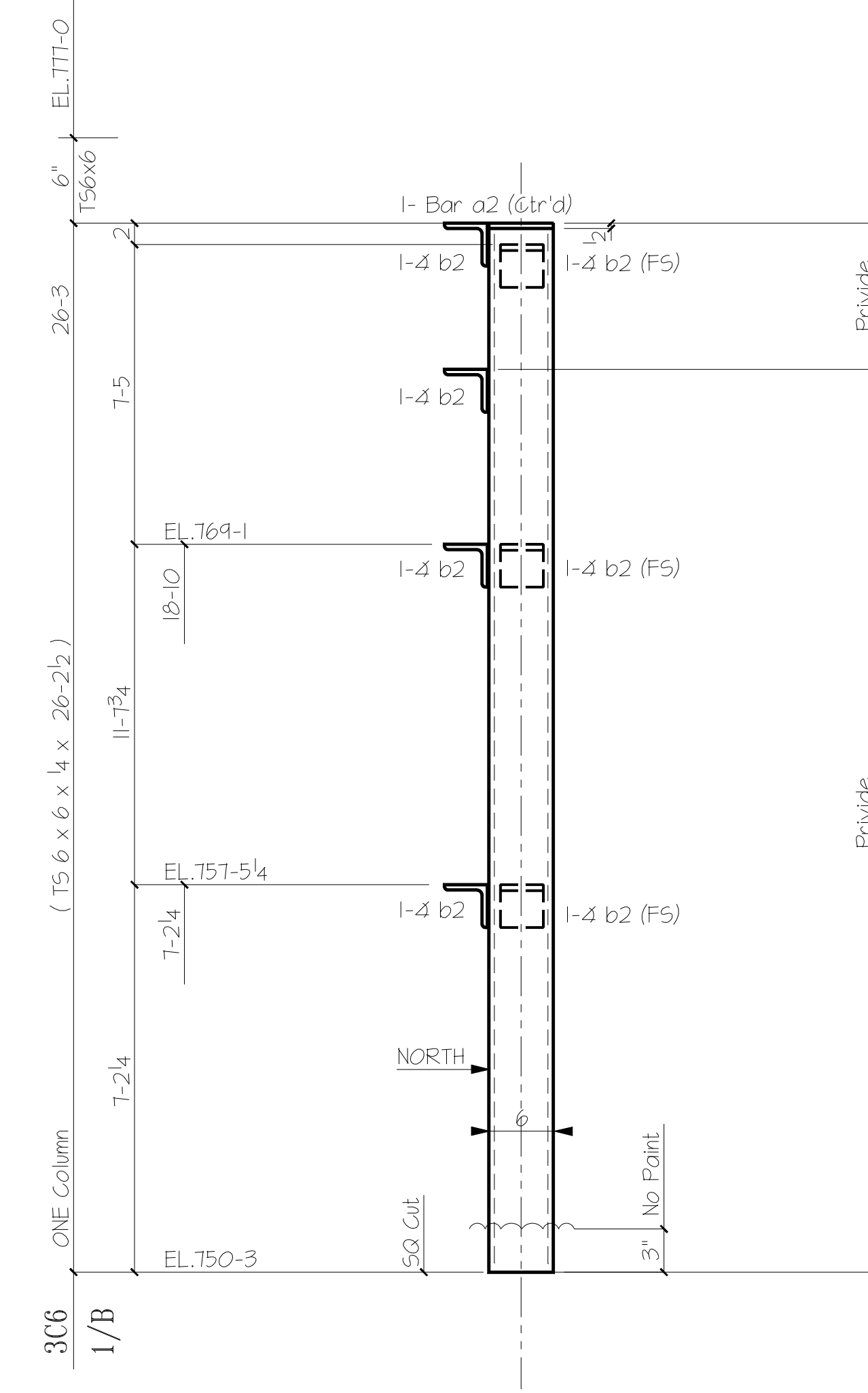
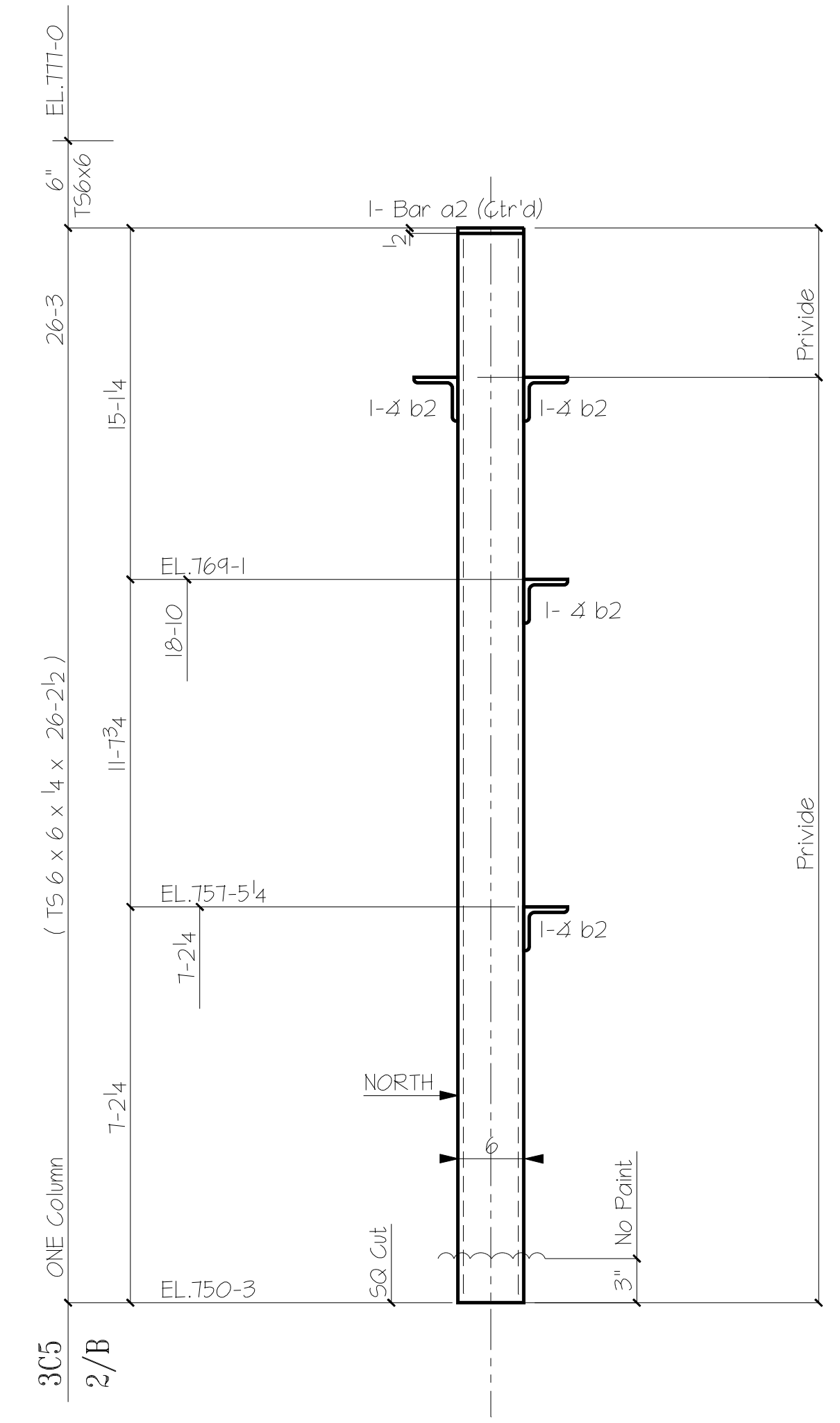
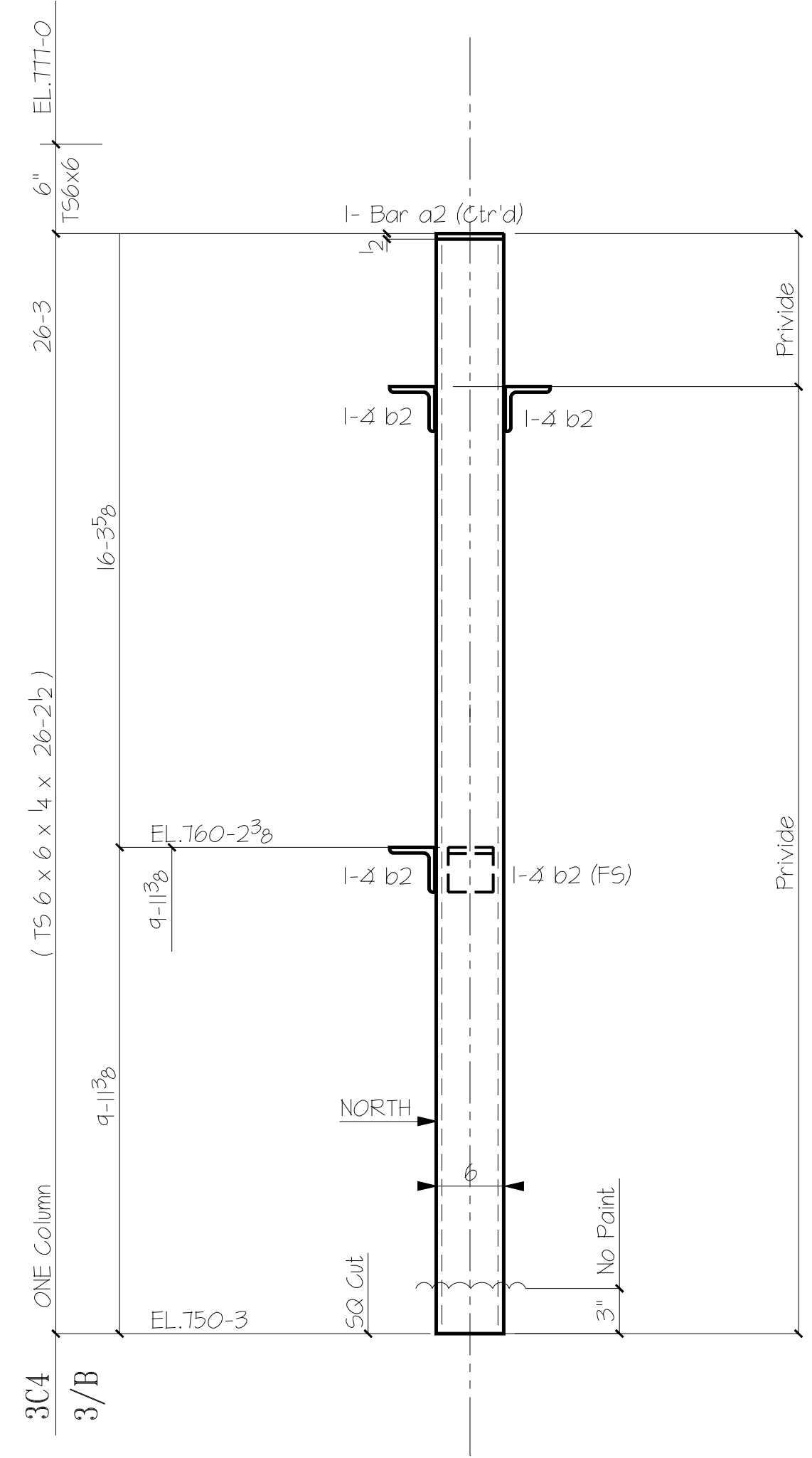
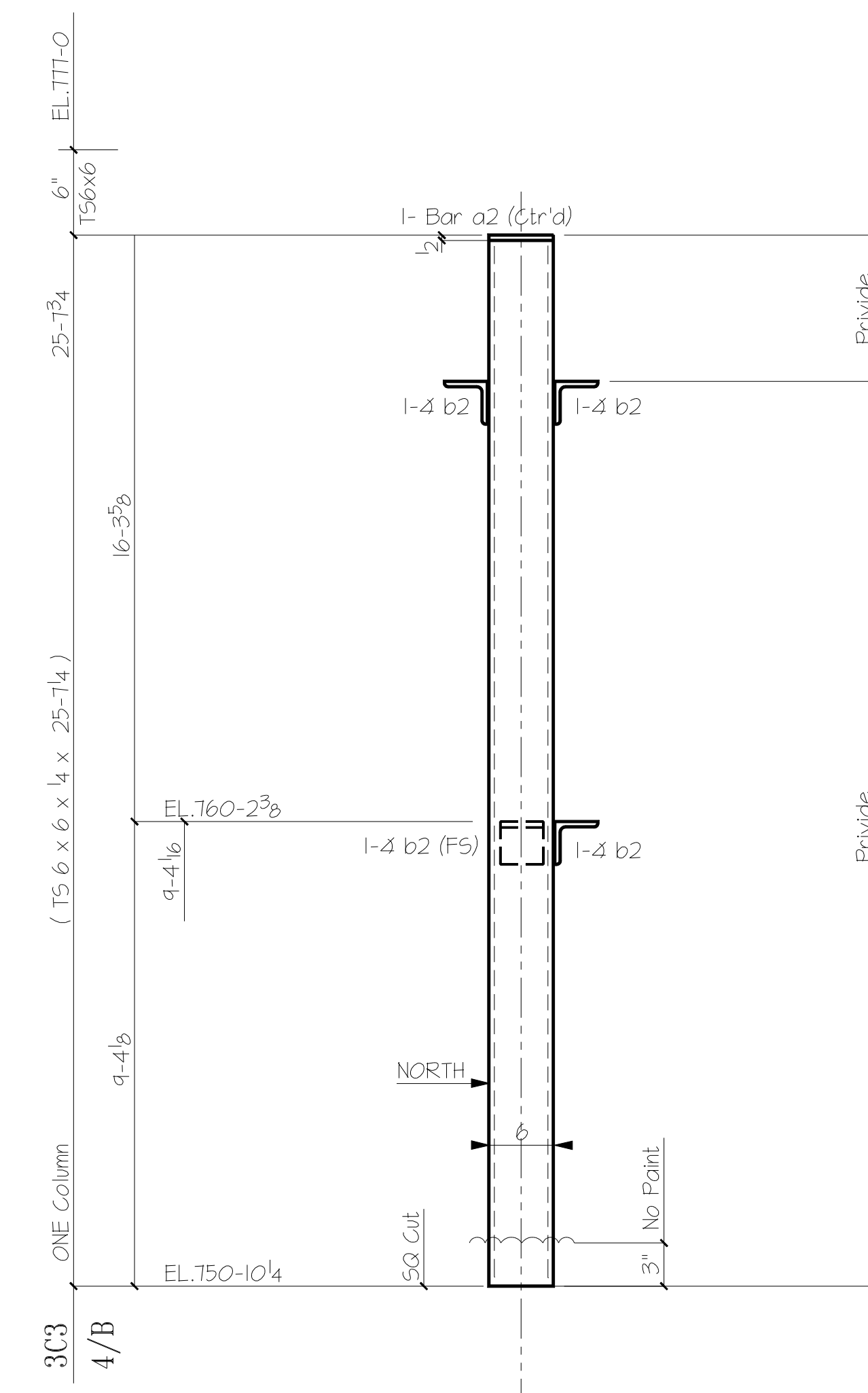
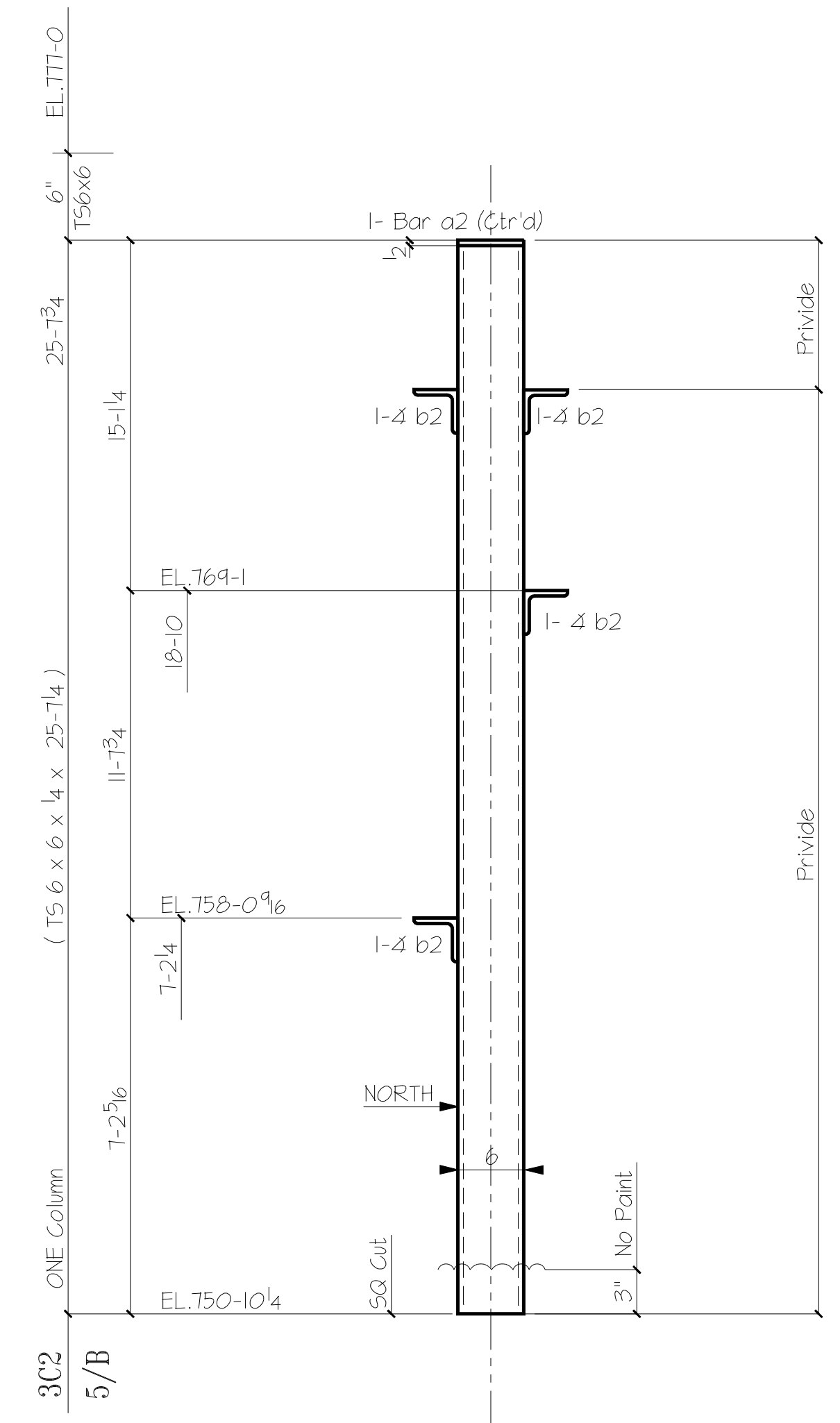
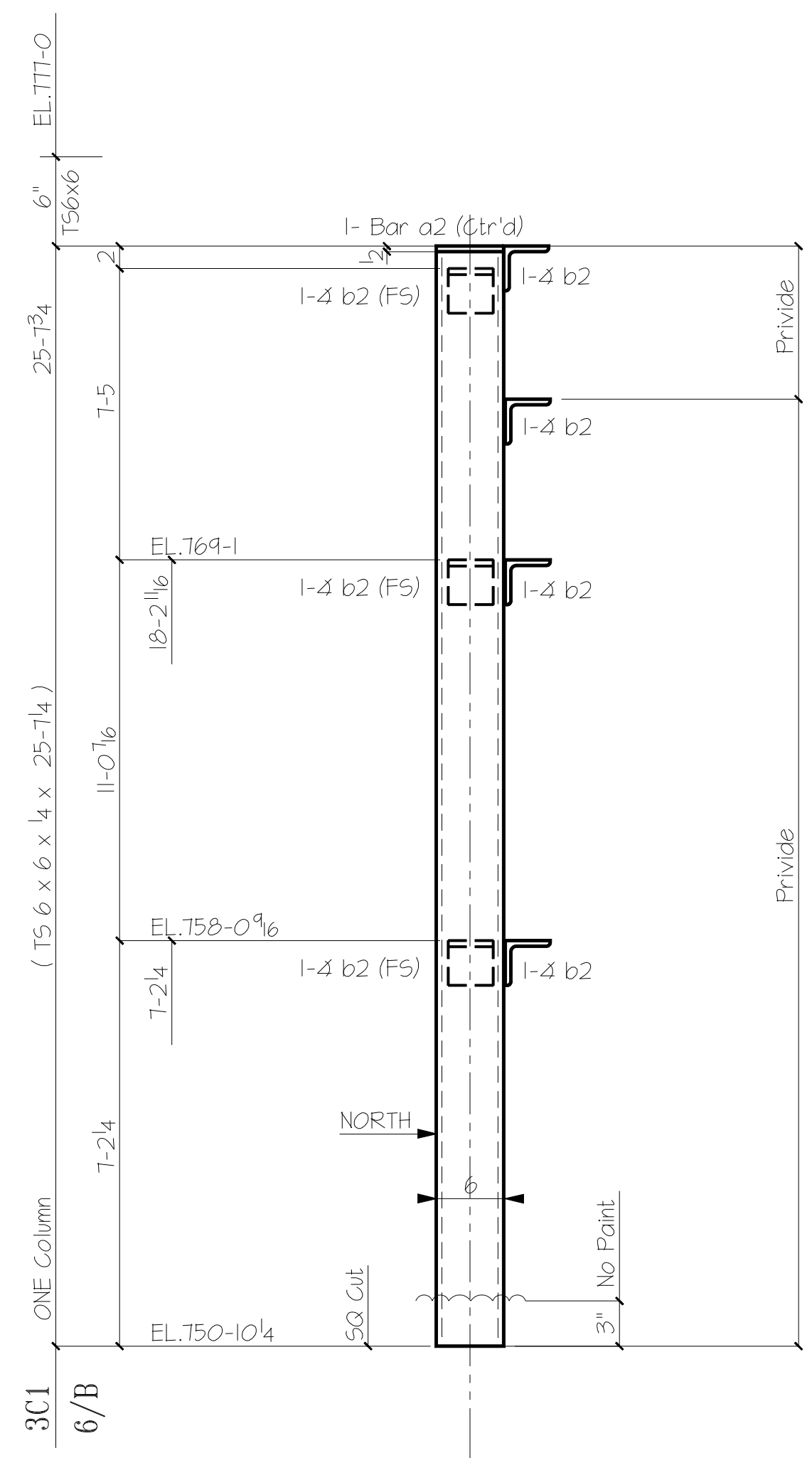
13/16" OPEN HOLE 1/4" FILLETS E70XX ELECTRODES

APPROVAL ? TO SHOP ?

Useable Template Mark Letters
 abcdefghijklmnopqrstuvwxyz
 FN= NEBC-cold.dwg

- BILL OF MATERIAL -

MARK	QTY	DESCRIPTION	LENGTH	REMARKS
3C1	1	T5 6 x 6 x 1/4	25-7 1/4	SQ-Cut
a3	1	Bar 1/2 x 6	0-6	
b3	7	4 4 x 4 x 3/8	0-4	
3C2	1	T5 6 x 6 x 1/4	25-7 1/4	SQ-Cut
a3	1	Bar 1/2 x 6	0-6	
b3	3	4 4 x 4 x 3/8	0-4	
3C3	1	T5 6 x 6 x 1/4	25-7 1/4	SQ-Cut
a3	1	Bar 1/2 x 6	0-6	
b3	6	4 4 x 4 x 3/8	0-4	
3C4	1	T5 6 x 6 x 1/4	26-2 1/2	SQ-Cut
a3	1	Bar 1/2 x 6	0-6	
b3	6	4 4 x 4 x 3/8	0-4	
3C5	1	T5 6 x 6 x 1/4	26-2 1/2	SQ-Cut
a3	1	Bar 1/2 x 6	0-6	
b3	3	4 4 x 4 x 3/8	0-4	
3C6	1	T5 6 x 6 x 1/4	26-2 1/2	SQ-Cut
a3	1	Bar 1/2 x 6	0-6	
b3	7	4 4 x 4 x 3/8	0-4	



MATERIAL GRADE SHELL BE A36 U.N.O.
 WF SHAPES A992 TUBES A500 Gr B
 CHANNELS A992 PIPES A53 Gr B

COATING One S/C Red Oxide Primer

13/16" OPEN HOLE 1/4" FILLETS E70XX ELECTRODES

APPROVAL ? TO SHOP ?

Useable Template Mark Letters
 abcdefghijklmnopqrstuvwxyz
 FN= NEBC-cold.dwg