

- DESCRIPTION OF REVISIONS MADE TO DRAWING -

1					
2					
3					
	REVISION DESCRIPTION	DATE	MADE BY	CHK BY	SHOPED
	REF DWG S2.01				

MATERIAL GRADE	SHELL BE	A36	U.N.O.
WF SHAPES	A442 G50	TUBES	A500 Gr B
CHANNELS	A36	PIPES	A501 or A53 Gr
COATING	One S/C Red Oxide Primer		
	13/16" Ø	1/4"	E70xx
	OPEN HOLE	FILLETS	ELECTRODES
APPROVAL	TO SHOP		

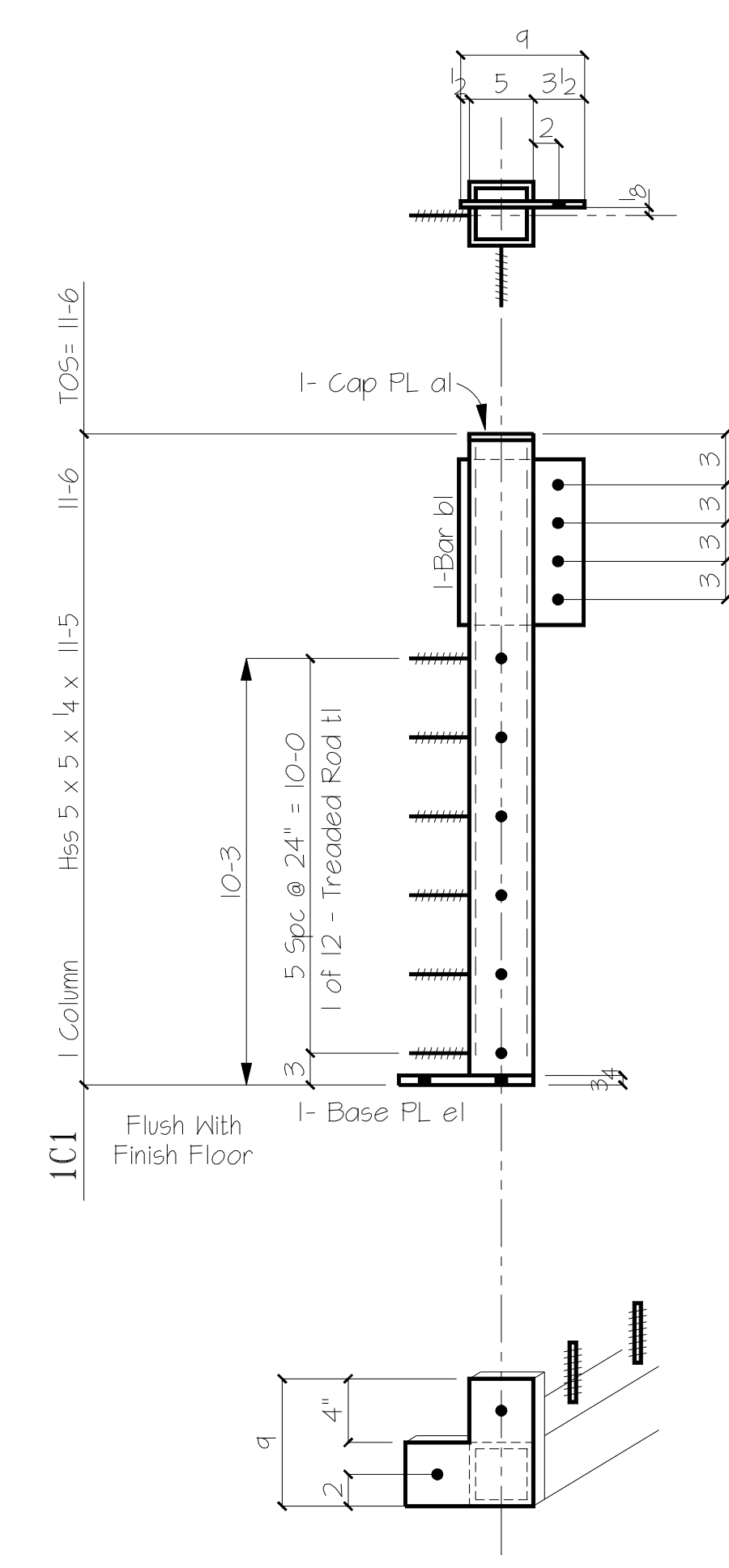
Justin Steel

DETAILS OF _____
 CUSTOMER _____
 ARCHITECT _____
 PROJECT _____
 LOCATION _____

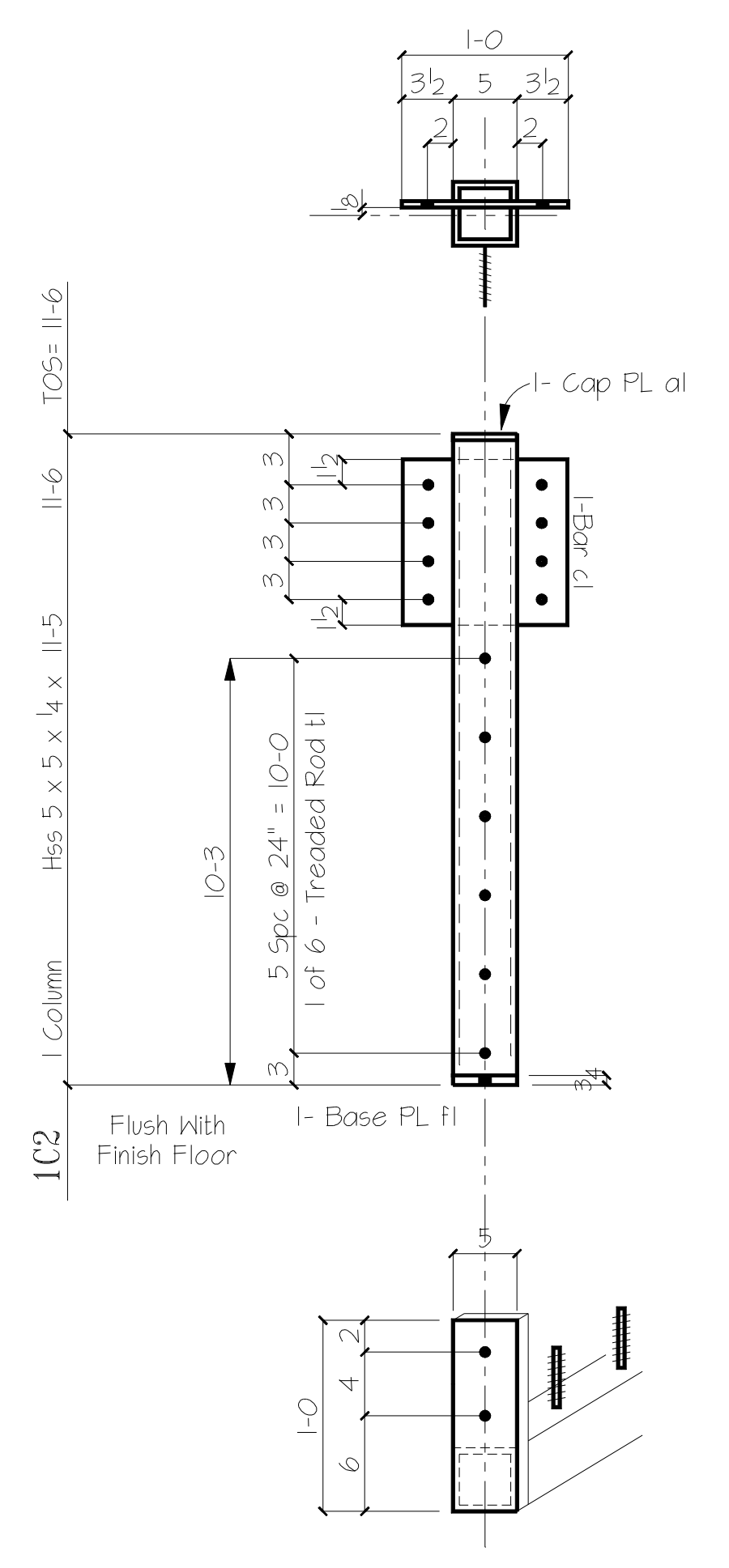
DETAIL	Dg	6-15-10	JOB #	
CHK.R	tsd	6-15-10	CW 1303	SHEET #
				E1

- BILL OF MATERIAL -

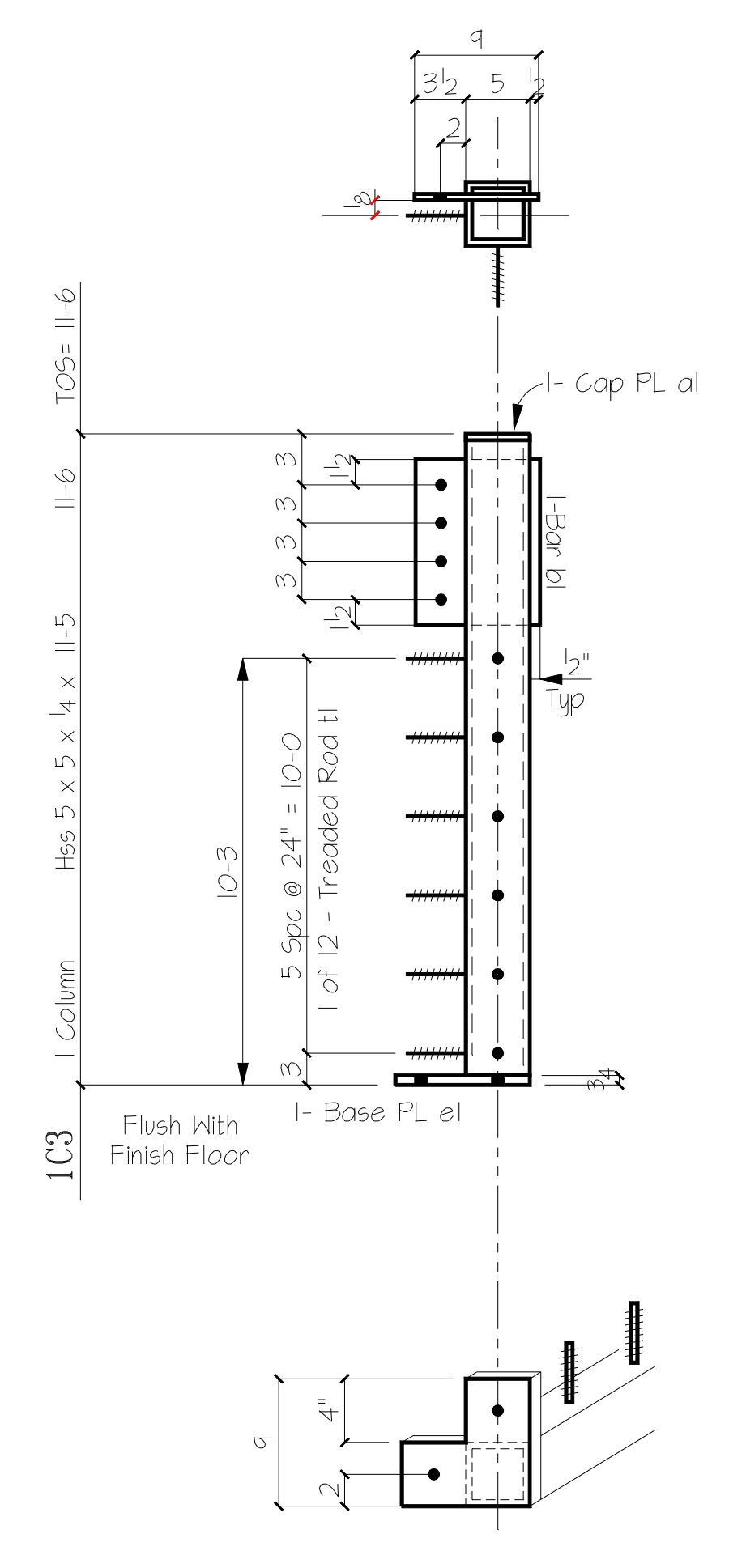
MARK	QTY	DESCRIPTION	LENGTH	REMARKS
IC1	1	Hss 5 x 5 x 1/4	11-5	
al	1	Bar 1/4 x 5	0-5	
bl	1	Bar 3/8 x 9	1-0	
el	1	Bar 3/4 x 9	0-9	
tl	12	1/2" Threaded Rod	0-2 1/2	
IC2	1	Hss 5 x 5 x 1/4	11-5	
al	1	Bar 1/4 x 5	0-5	
cl	1	Bar 3/8 x 12	1-0	
fl	1	Bar 3/4 x 5	1-0	
tl	6	1/2" Threaded Rod	0-2 1/2	
IC3	1	Hss 5 x 5 x 1/4	11-5	
al	1	Bar 1/4 x 5	0-5	
bl	1	Bar 3/8 x 9	1-0	
el	1	Bar 3/4 x 9	0-9	
tl	12	1/2" Threaded Rod	0-2 1/2	
IC4	1	Hss 5 x 5 x 1/4	11-5	
al	1	Bar 1/4 x 5	0-5	
nl	1	Bar 3/8 x 9	1-0	
hl	1	Bar 3/4 x 5	1-0	
tl	12	1/2" Threaded Rod	0-2 1/2	
IC5	1	Hss 5 x 5 x 1/4	11-5	
al	1	Bar 1/4 x 5	0-5	
kl	1	Bar 3/8 x 9	0-9	
el	1	Bar 3/4 x 9	0-9	
tl	12	1/2" Threaded Rod	0-2 1/2	
IB1	1	W 16 x 31	24-6	
tl	9	1/2" Threaded Rod	0-2 1/2	
IB2	1	W 16 x 31	31-6	
tl	13	1/2" Threaded Rod	0-2 1/2	
IB3	1	W 14 x 22	15-8 1/2	
tl	6	1/2" Threaded Rod	0-2 1/2	
sa3	2	4 x 4 x 3/8	0-9	
IB4	1	W 14 x 22	13-6	
tl	5	1/2" Threaded Rod	0-2 1/2	



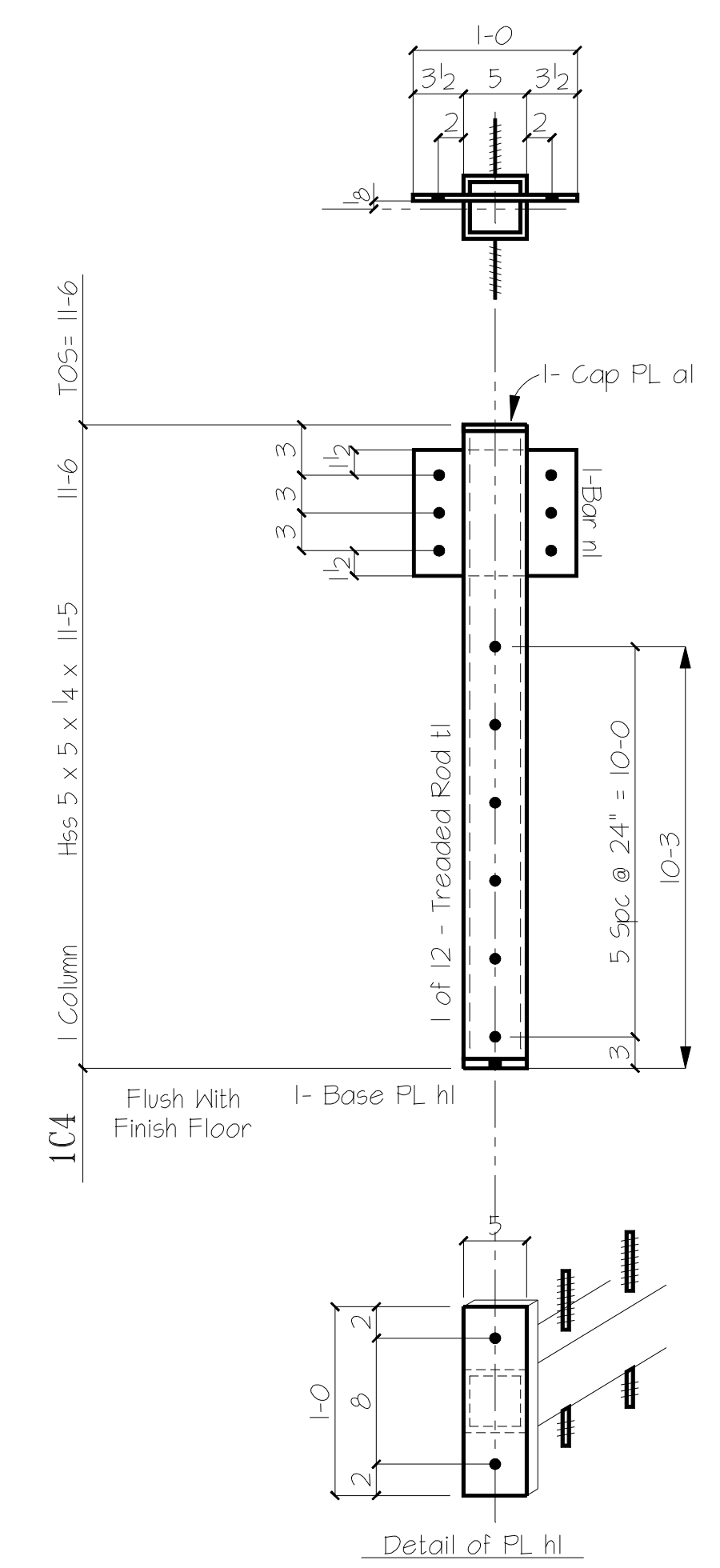
Detail of PL el



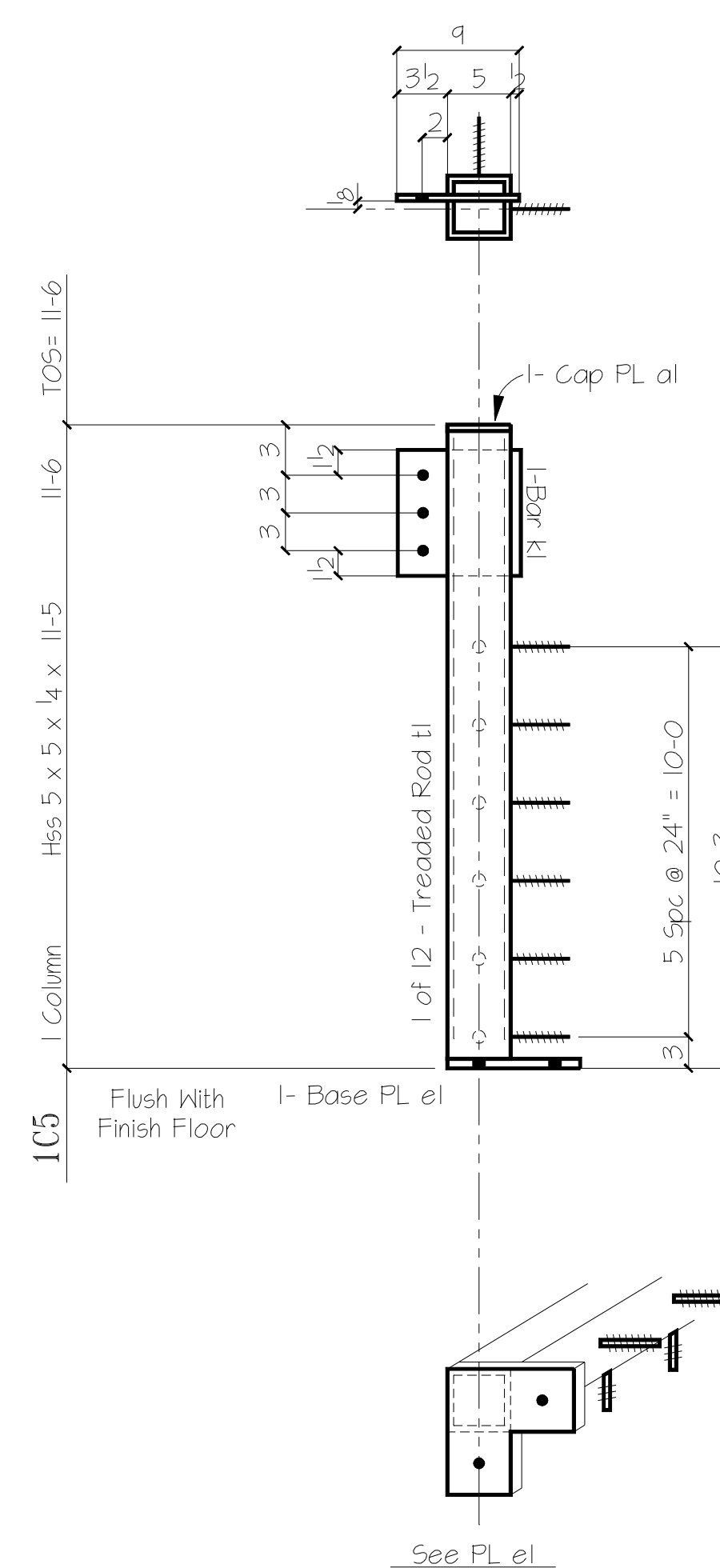
Detail of PL fl



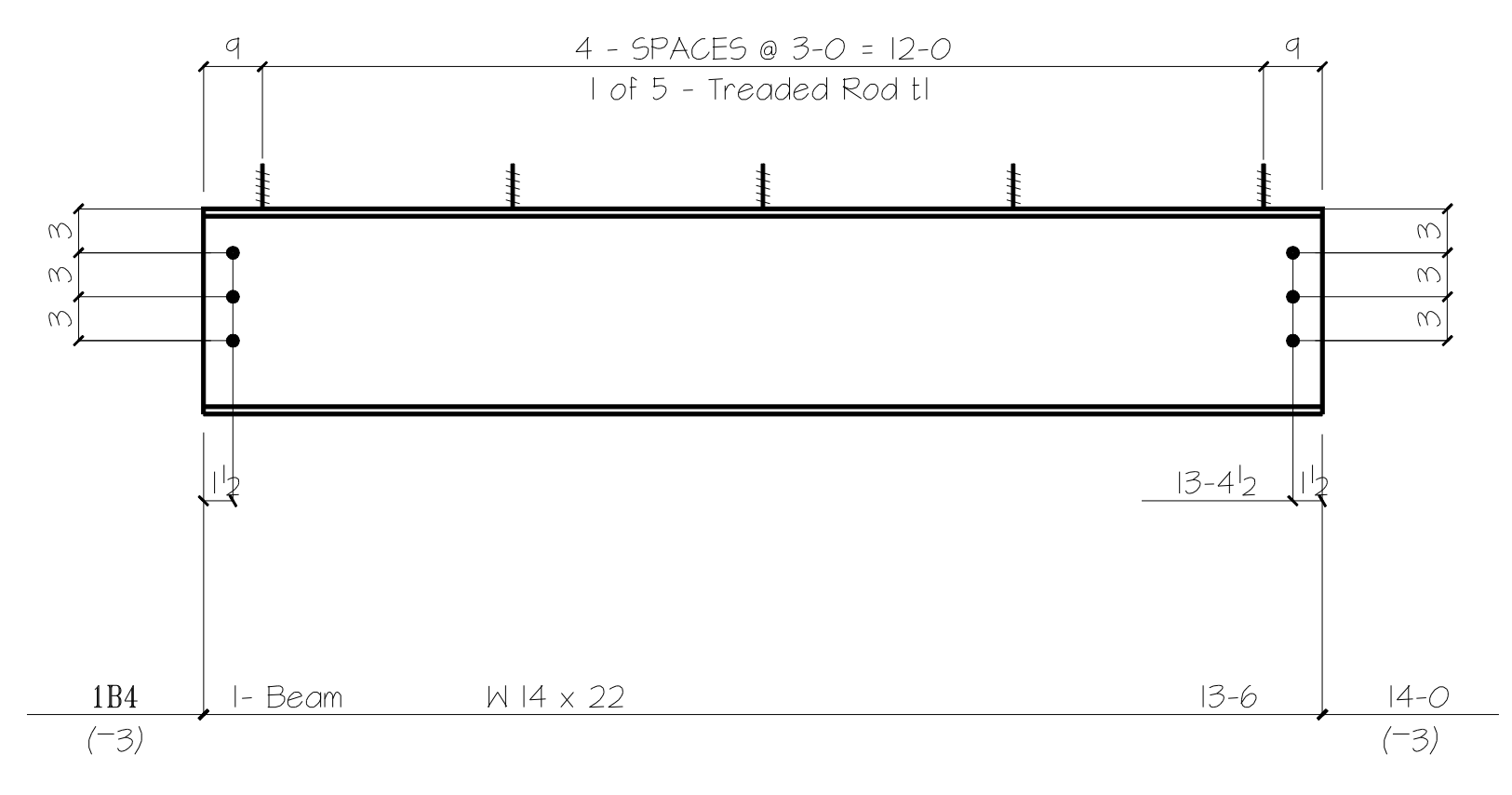
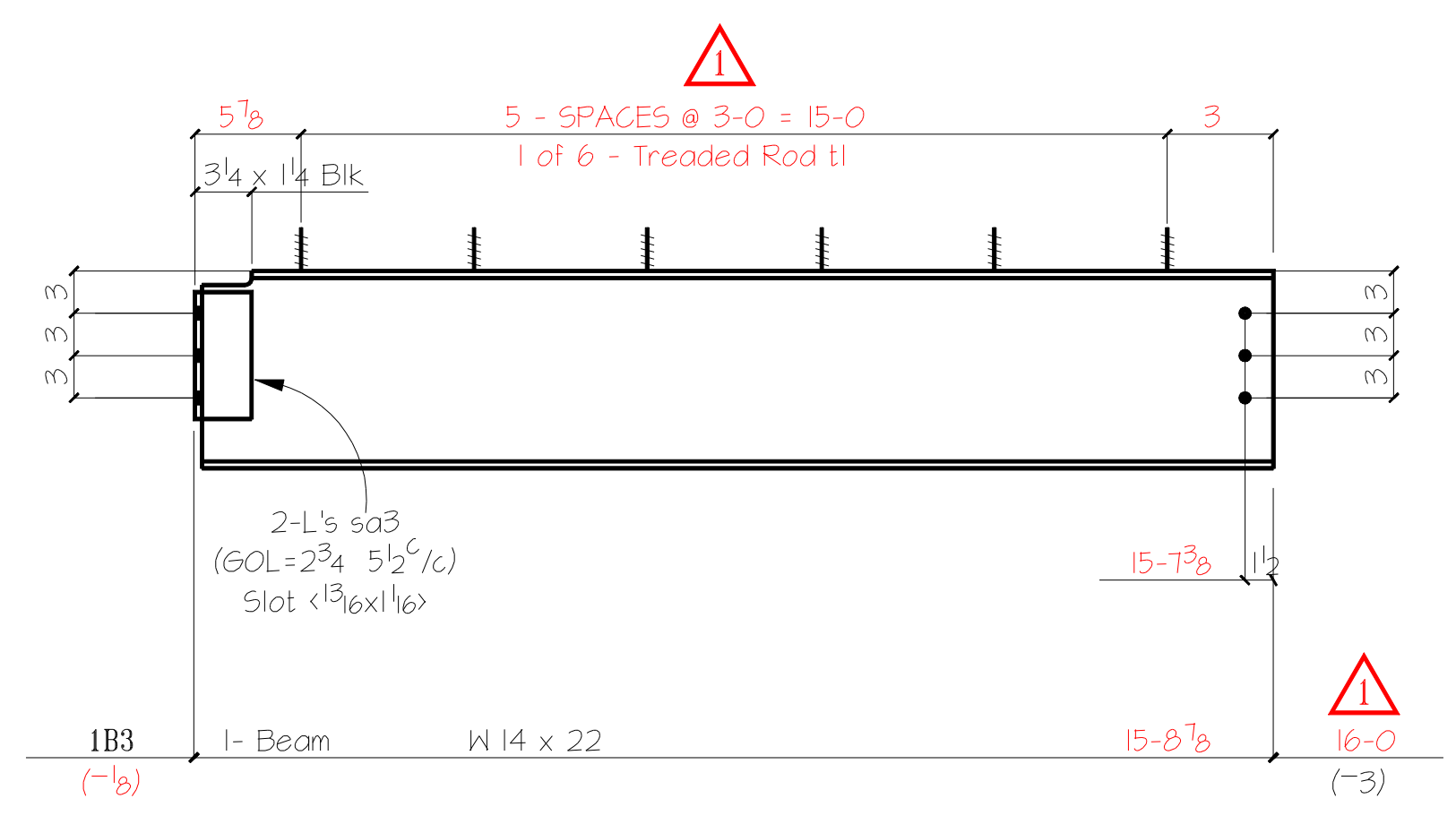
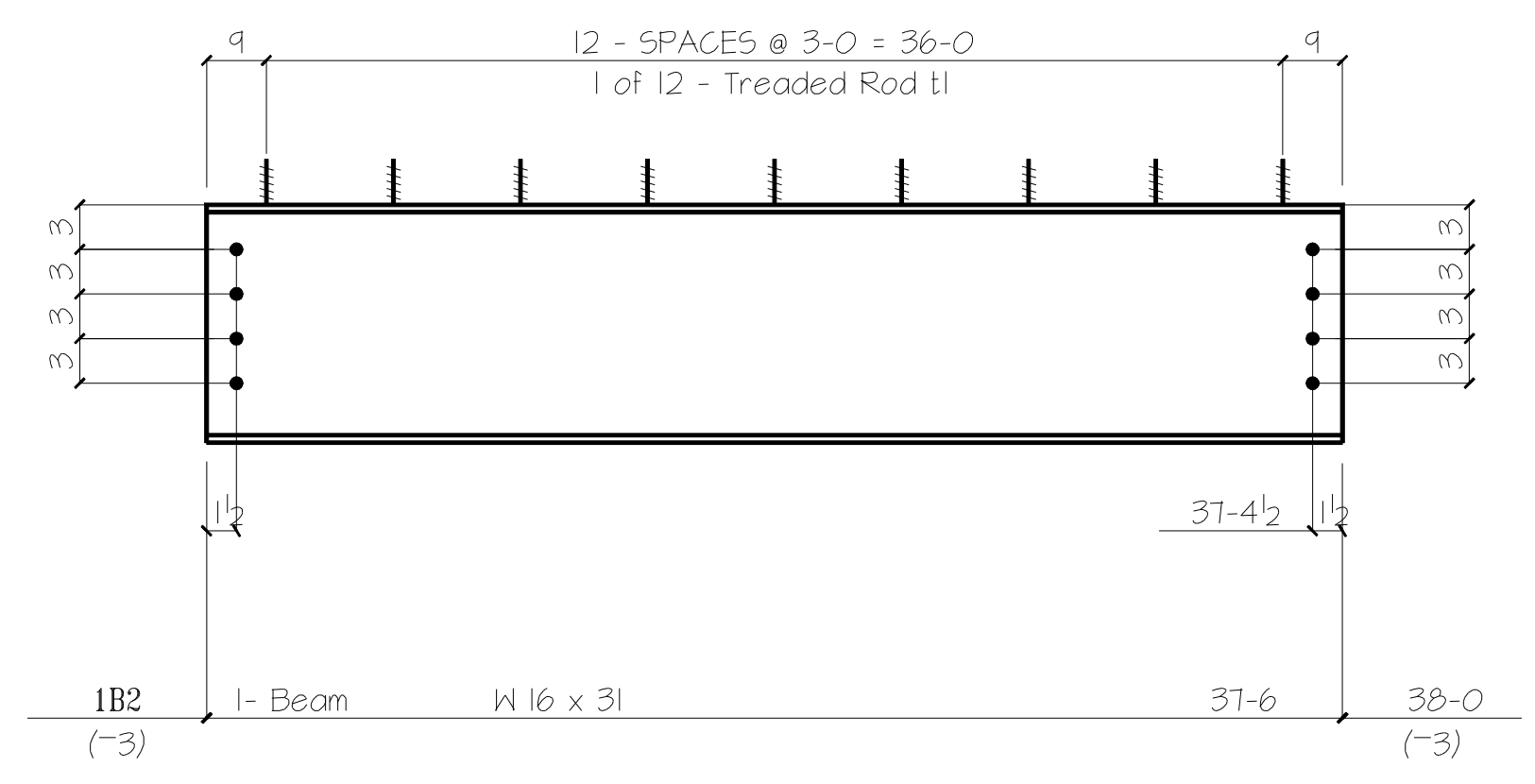
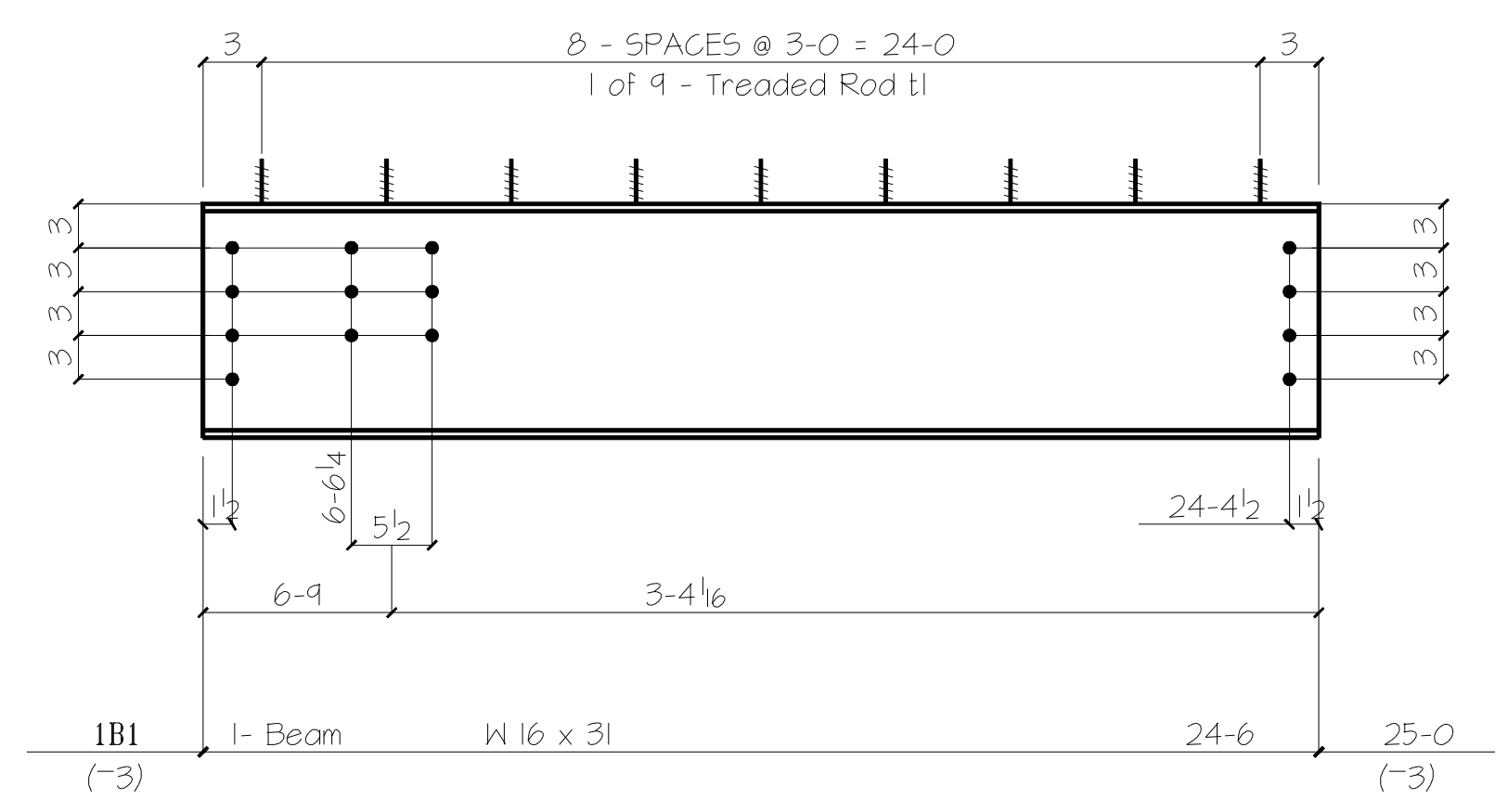
Detail of PL el



Detail of PL hl



See PL el



- DESCRIPTION OF REVISIONS MADE TO DRAWING -

REVISION	DESCRIPTION	DATE	MADE BY	CHK BY	SHOPED
1					
2					
3					

REF DWG S2.01

MATERIAL GRADE SHELL BE A36 U.N.O.
 WF SHAPES A992 G50 TUBES A500 Gr B
 CHANNELS A36 PIPES A501 or A53 Gr

COATING One S/C Red Oxide Primer

13/16" OPEN HOLE 1/4" FILLETS E70xx ELECTRODES

APPROVAL _____ TO SHOP _____

Justin Steel

DETAILS OF CUSTOMER ARCHITECT PROJECT LOCATION

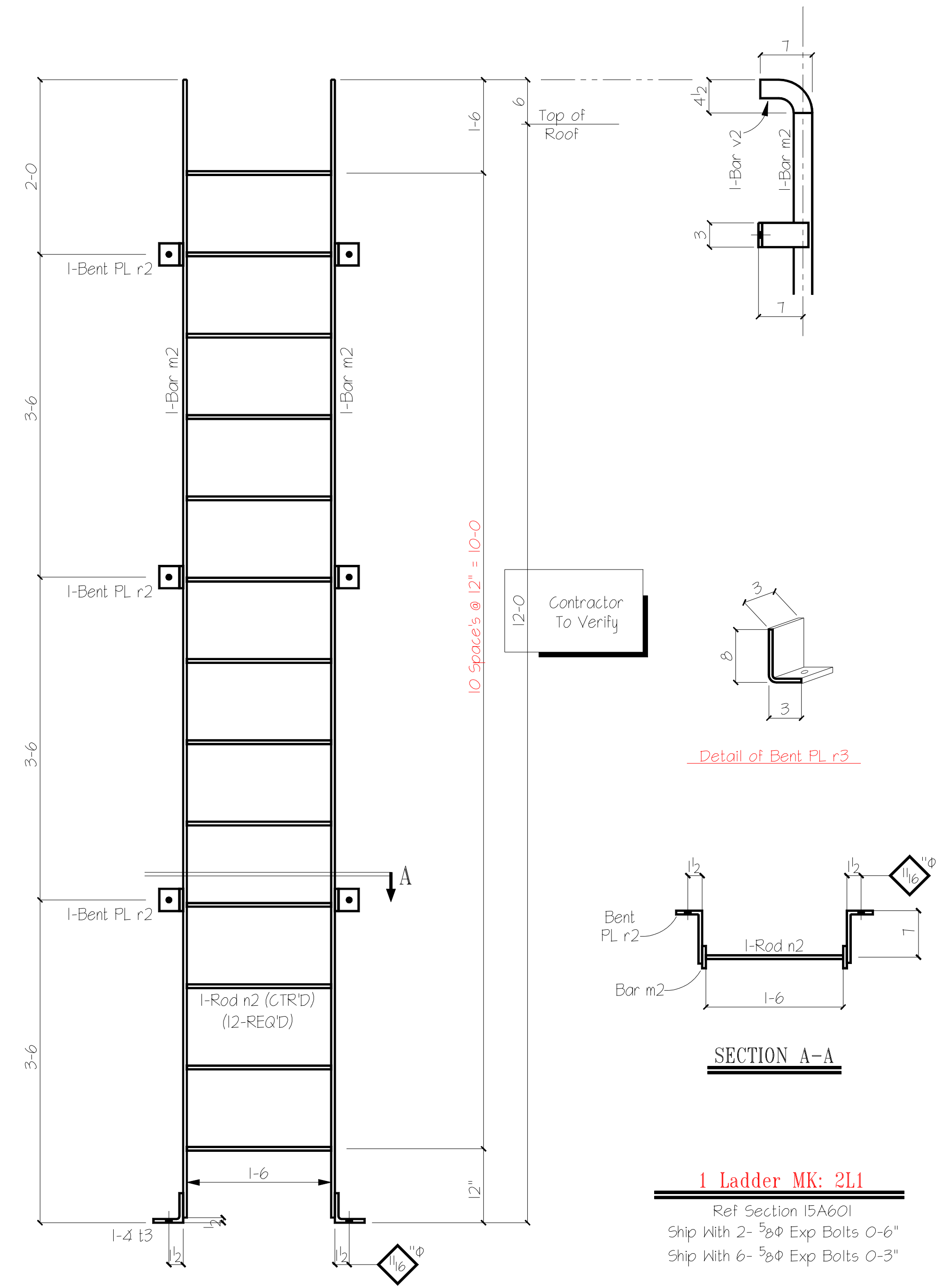
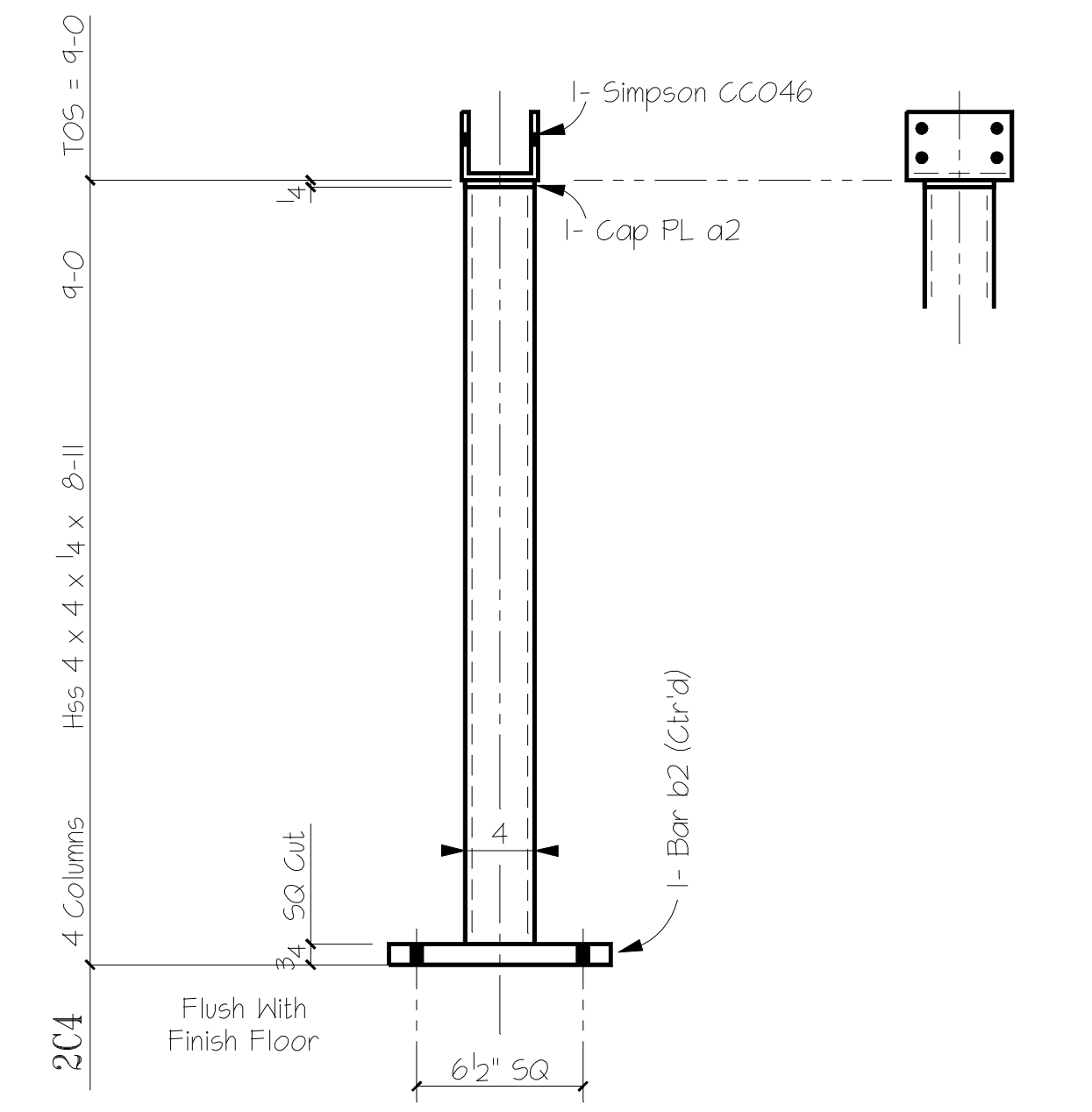
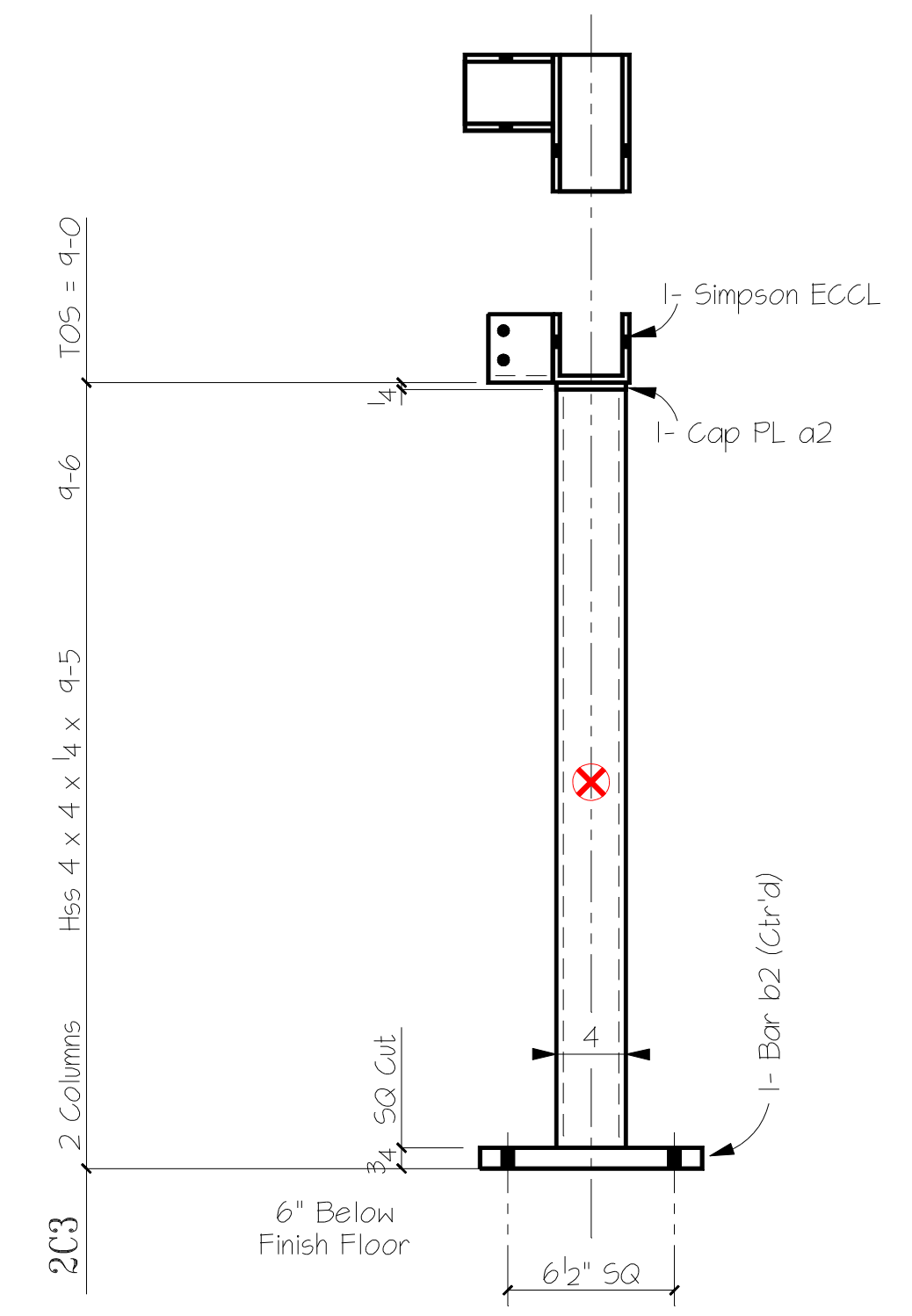
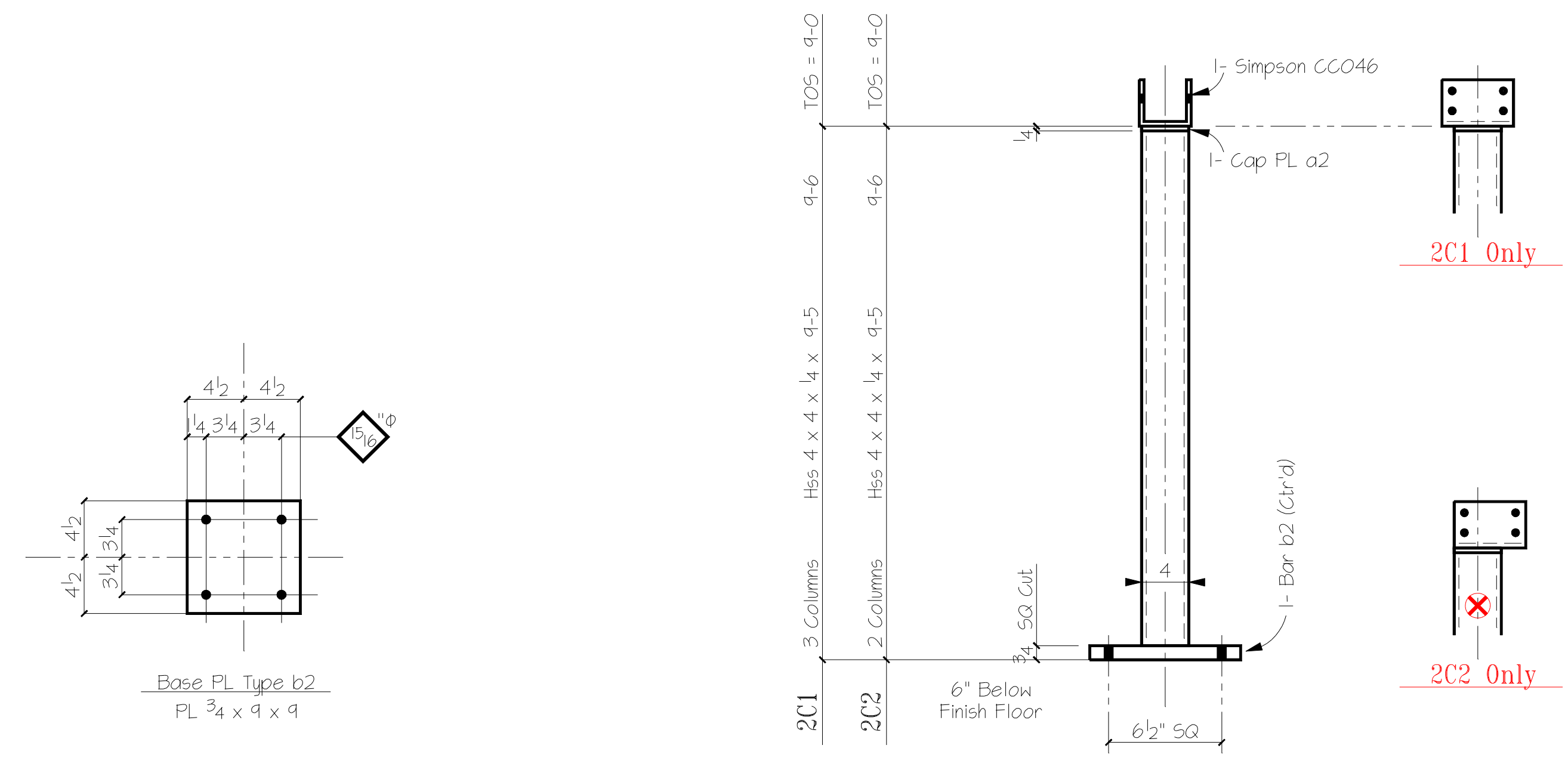
DETAIL Dg 6-15-10 JOB # CW 1303 SHEET # D1

CHK.R tsd 6-15-10

Usable Template Mark Letters
 a b c d e f g h j k m n p q r s t v w x y z
 FN= Castle-Clawg

- BILL OF MATERIAL -

MARK	QTY	DESCRIPTION	LENGTH	REMARKS
2C1	3	Hss 4 x 4 x 1/4	9-5	
a2	3	Bar 1/4 x 4	0-4	
b2	3	Bar 3/4 x 9	0-9	
CCO46	3	Simpson Column Cap	0-11	
2C2	2	Hss 4 x 4 x 1/4	9-5	
a2	2	Bar 1/4 x 4	0-4	
b2	2	Bar 3/4 x 9	0-9	
CCO46	2	Simpson Column Cap	0-11	
2C3	2	Hss 4 x 4 x 1/4	9-5	
a2	2	Bar 1/4 x 4	0-4	
b2	2	Bar 3/4 x 9	0-9	
ECCL	2	Simpson Column Cap	0-11	
2C4	4	Hss 4 x 4 x 1/4	8-11	
a2	4	Bar 1/4 x 4	0-4	
b2	4	Bar 3/4 x 9	0-9	
CCO46	4	Simpson Column Cap	0-11	
Steel Lintels				
2WL1	31	4 5 x 3 1/2 x 5/16	4-0	
2WL2	7	4 5 x 3 1/2 x 1/4	3-6	
2WL3	3	4 5 x 3 1/2 x 5/16	4-0	
2WL4	5	4 5 x 3 1/2 x 5/16	4-0	
2WL5	1	4 6 x 4 x 3/8	8-6	
2DL1	8	4 5 x 3 1/2 x 1/4	4-0	
2DL2	1	4 5 x 3 1/2 x 3/8	8-0	
2L1	1	Ladder		
m2	2	Bar 1/2 x 3	12-1	
n2	12	Rod 3/4"Ø	1-6	
r2	6	Bent PL 5/16 x 3	0-11	
t3	2	4 3 x 3 x 5/16	0-3	
v2	2	Bar 1/2 x 4 1/2	0-7	



1 Ladder MK: 2L1
 Ref Section 15A601
 Ship With 2- 5/8" Exp Bolts 0-6"
 Ship With 6- 5/8" Exp Bolts 0-3"

Hot Dip Galvanized				
2WL1	31	4 5 x 3 1/2 x 5/16	4-0	3-0
2WL2	7	4 5 x 3 1/2 x 1/4	3-6	2-6
2WL3	3	4 5 x 3 1/2 x 5/16	4-0	3-0
2WL4	5	4 5 x 3 1/2 x 5/16	4-0	3-0
2WL5	1	4 6 x 4 x 3/8	8-6	7-6

Window Lintel Ref A301, A601, A801, 4/54.10

Hot Dip Galvanized				
2DL1	8	4 5 x 3 1/2 x 1/4	4-0	3-0 Wide
2DL2	1	4 5 x 3 1/2 x 3/8	8-0	7-0 Wide

Door Lintel Ref A301, A801, 4/54.10

Usable Template Mark Letters
 P1= Castle-Olding

- DESCRIPTION OF REVISIONS MADE TO DRAWING -				
1	Added Ladder		6-16-10	
2				
3				
	REVISION DESCRIPTION	DATE	MADE BY	CHK BY

REF DWG S2.01

MATERIAL GRADE SHELL BE	A36	U.N.O.
WF SHAPES	A492 G50	TUBES A500 Gr B
CHANNELS	A36	PIPES A501 or A53 Gr
COATING	One S/C Red Oxide Primer	
13/16"Ø	1/4"	E70xx
OPEN HOLE	FILLETS	ELECTRODES
APPROVAL	TO SHOP	

Justin Steel

DETAILS OF CUSTOMER PROJECT LOCATION

DETAIL Dg 6-15-10
 JOB # CW 1303
 SHEET # D2