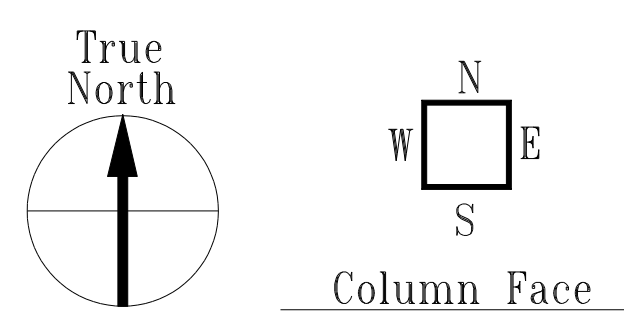


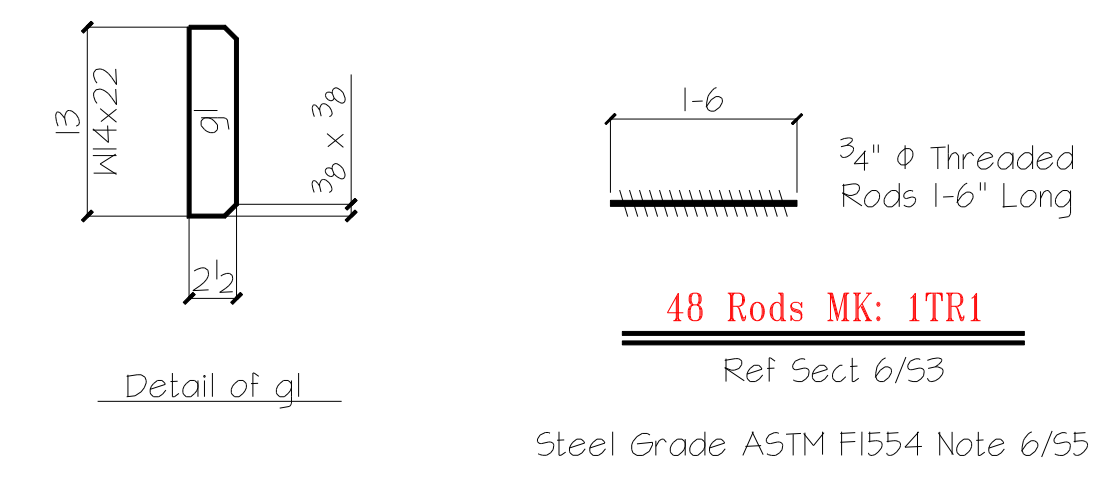
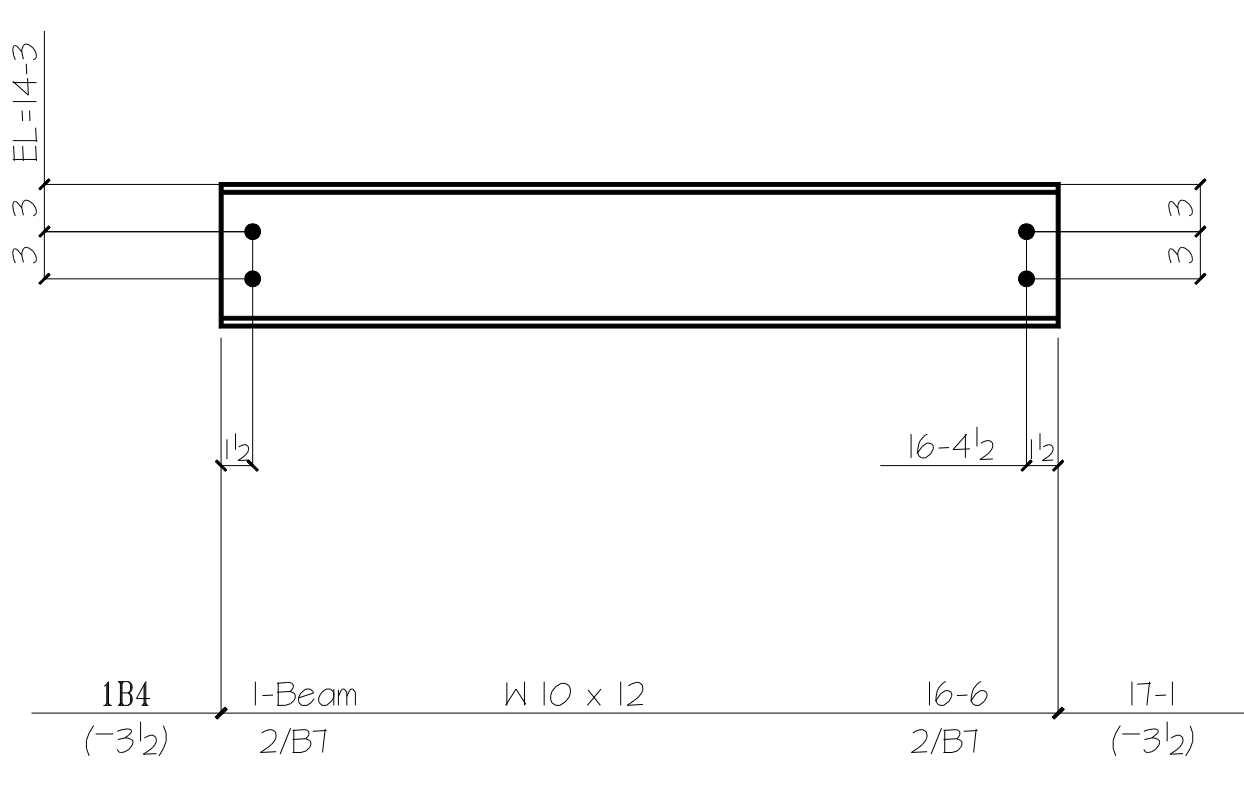
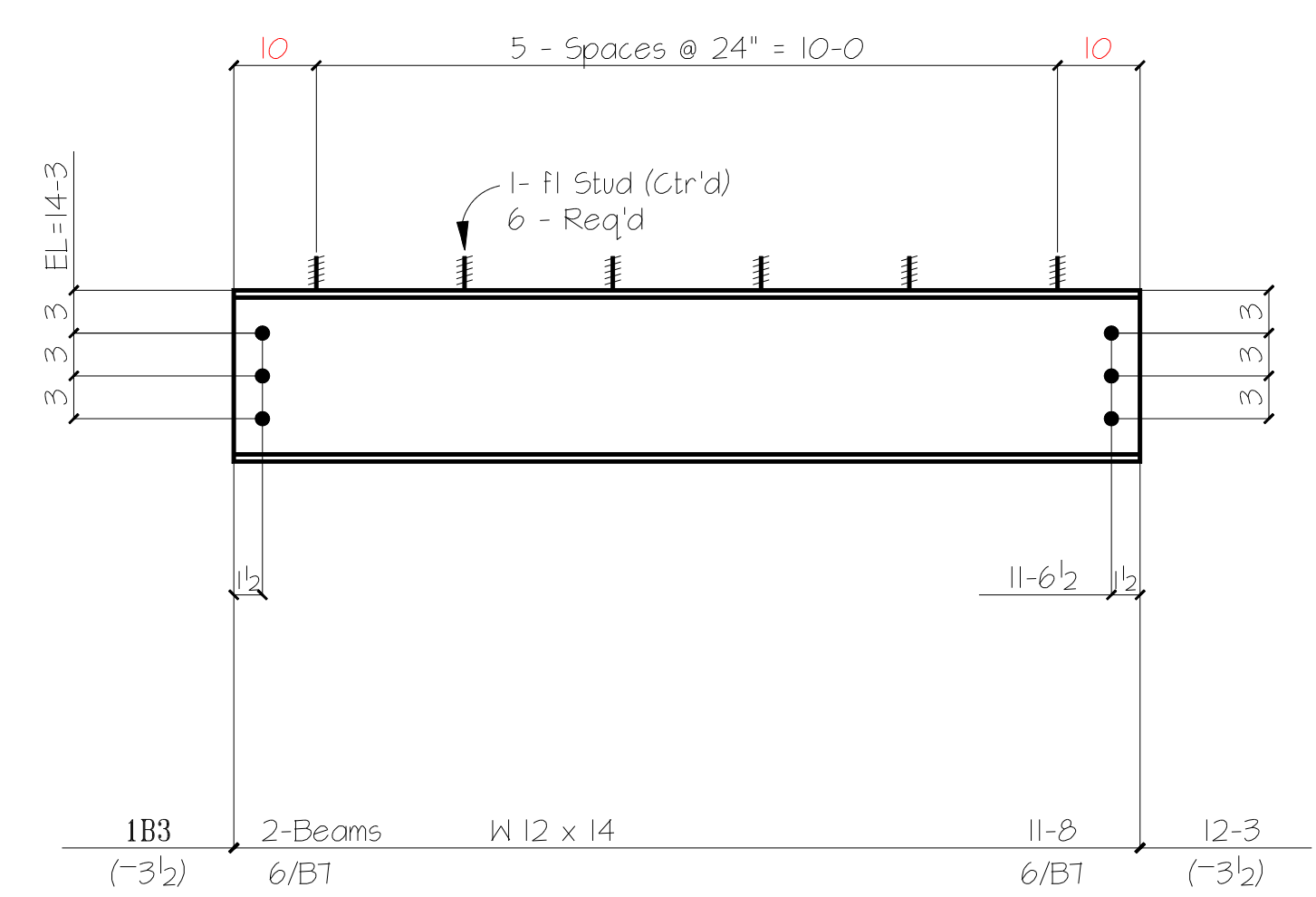
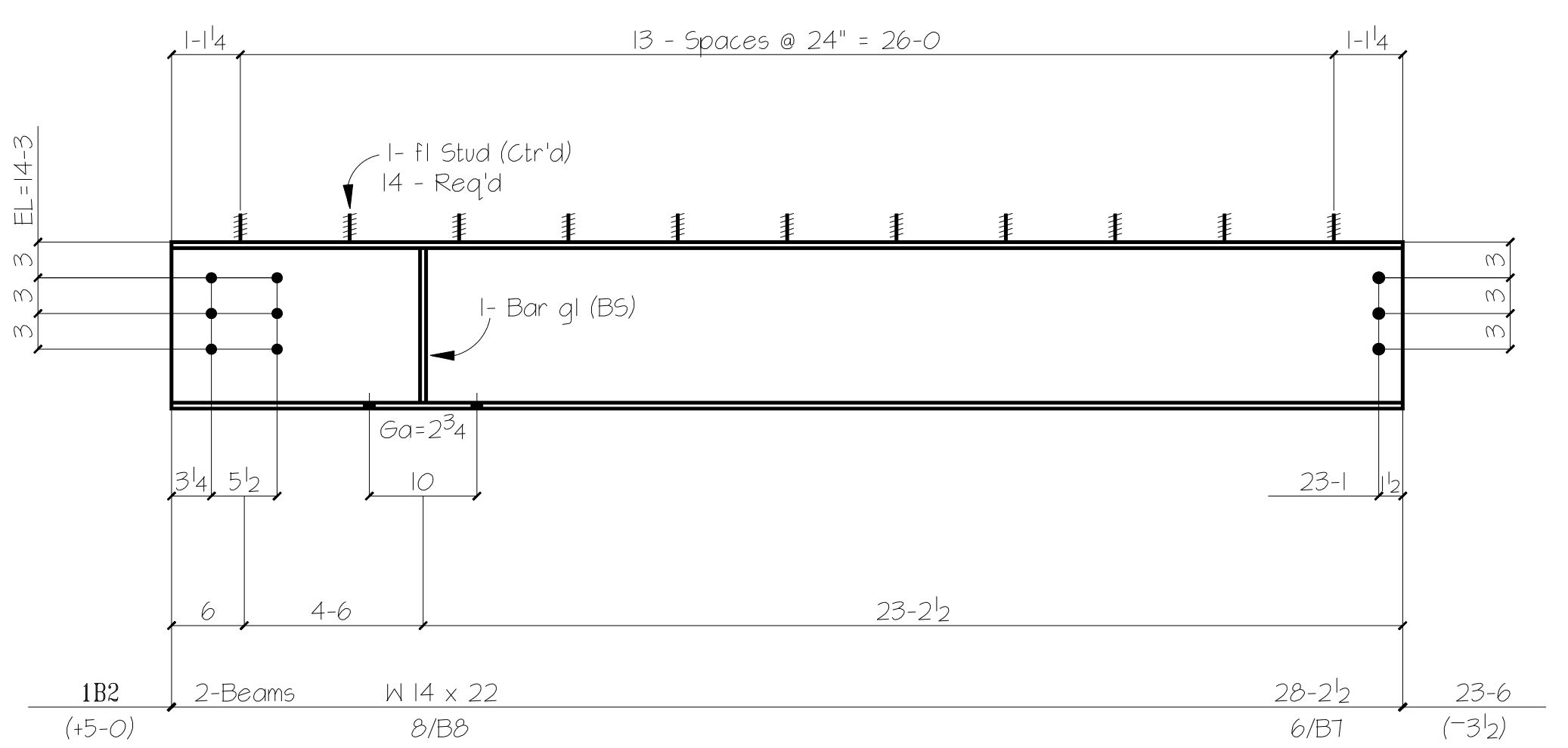
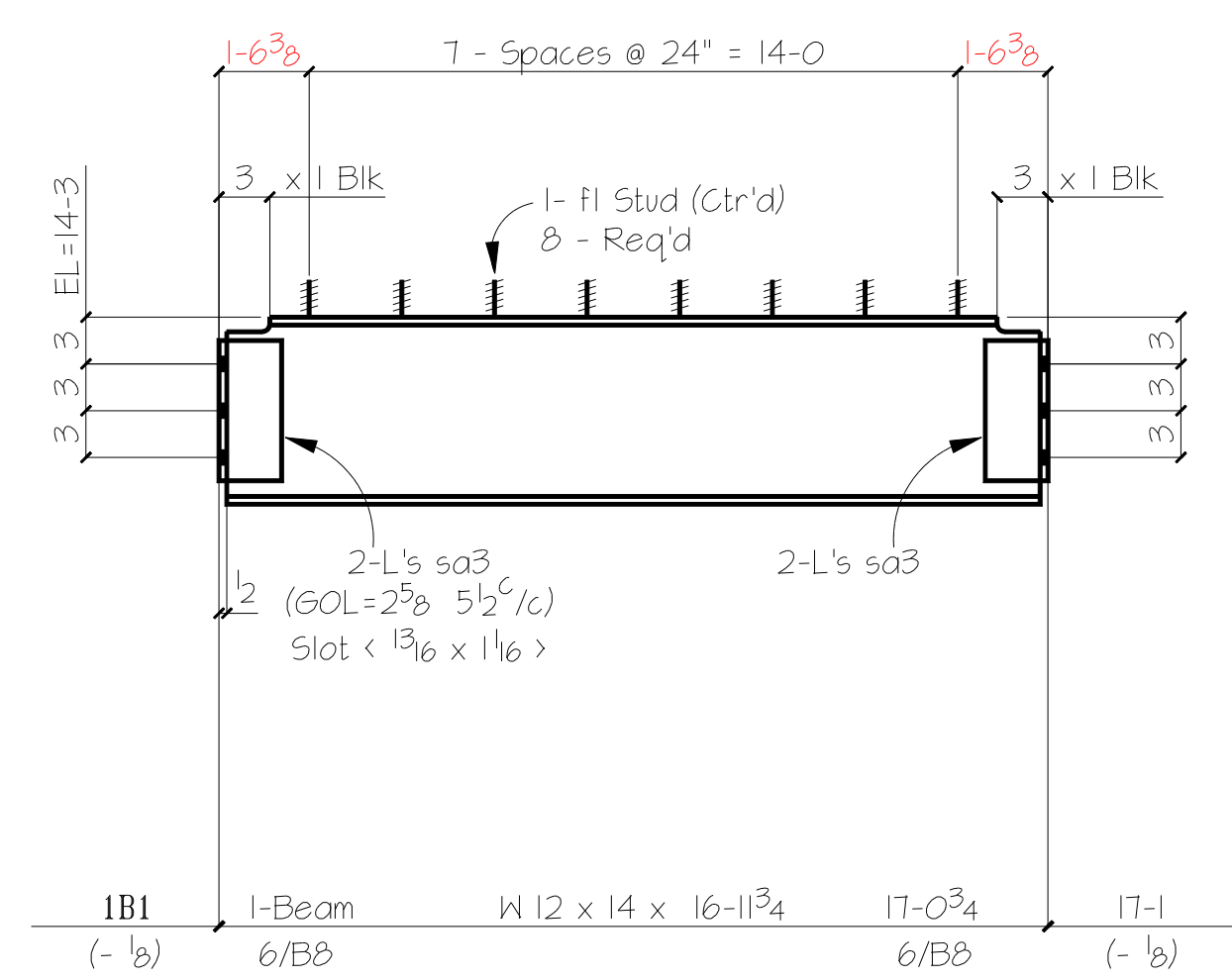
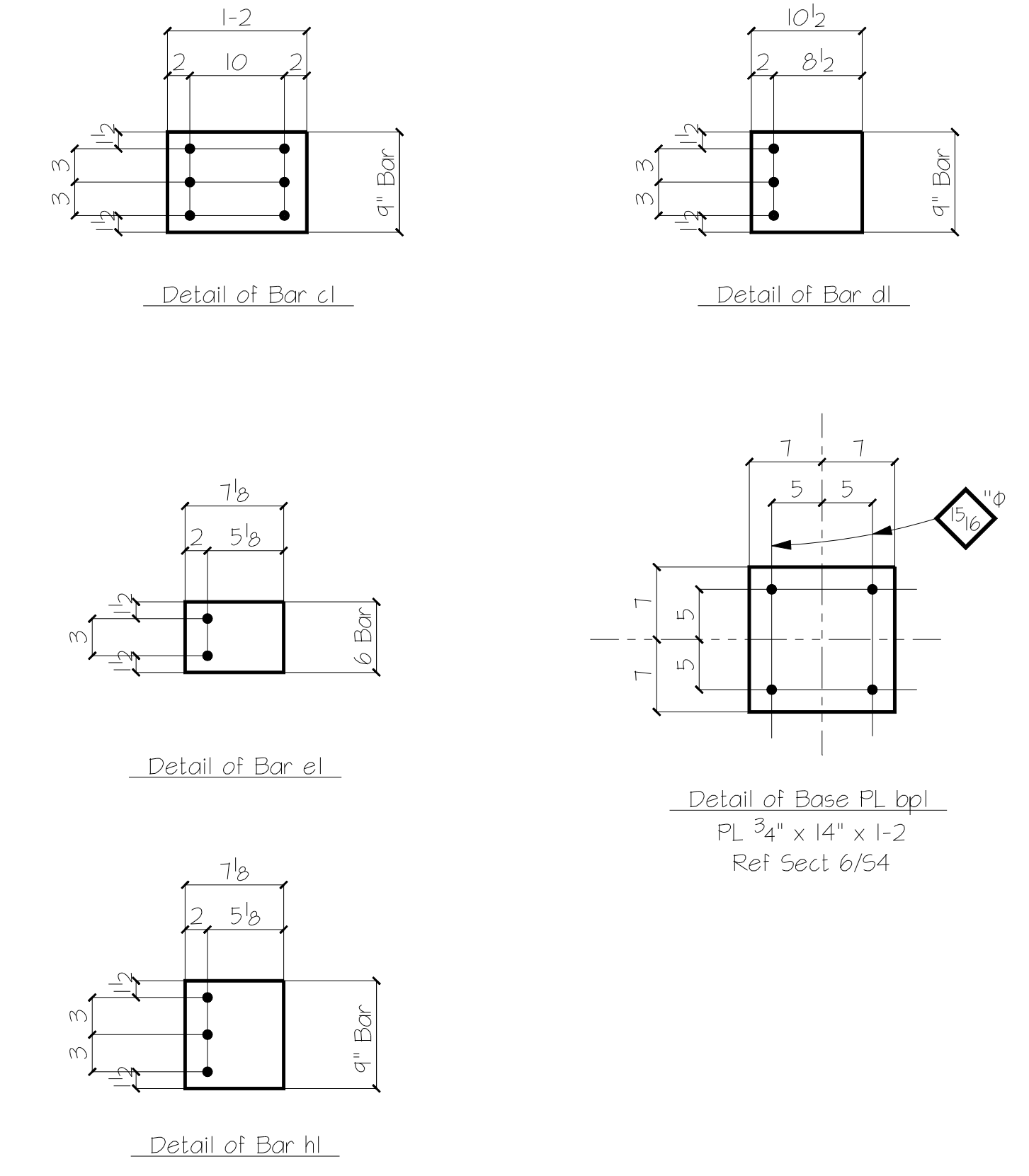
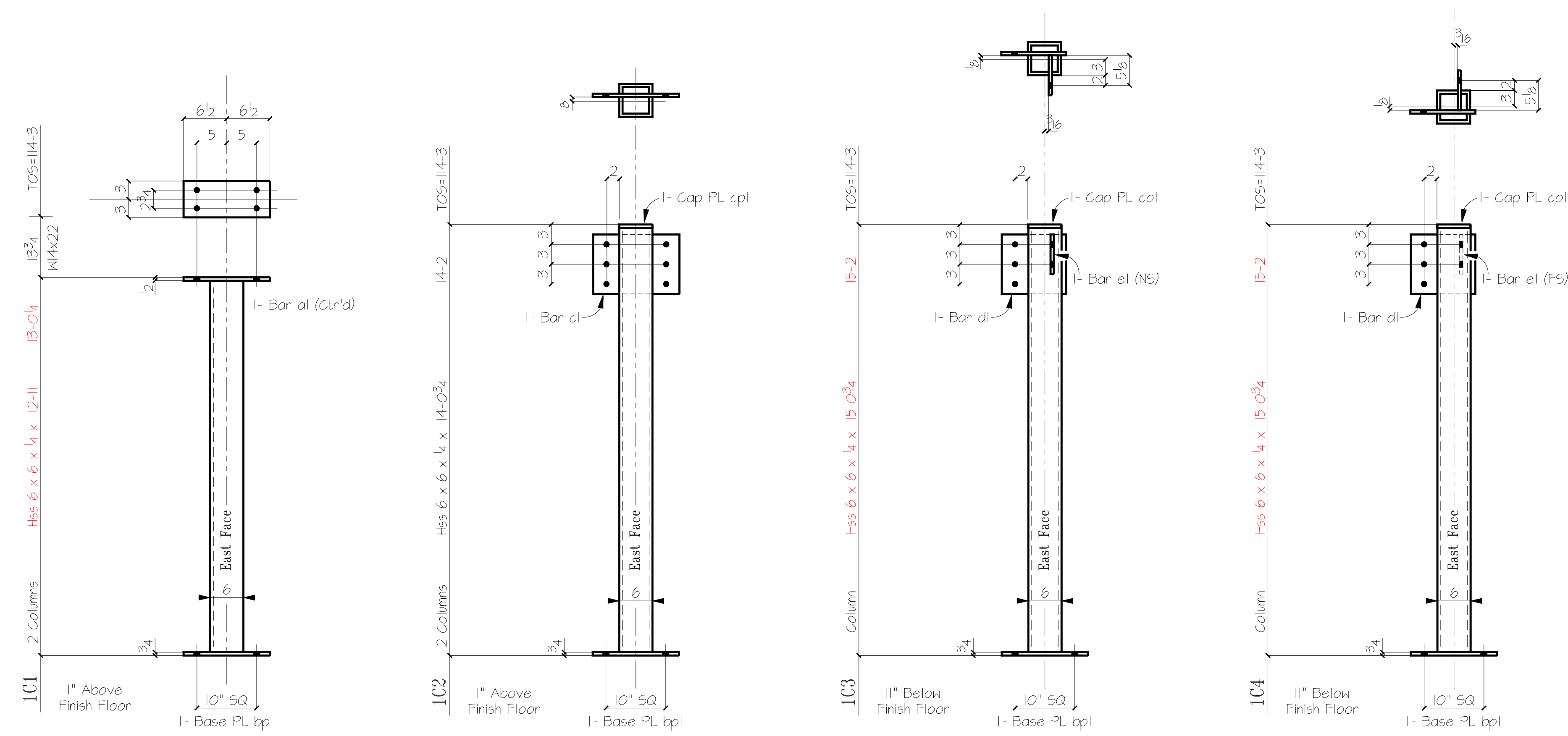
Plans For Approval
& Not Construction



- DESCRIPTION OF REVISIONS MADE TO DRAWING -				MATERIAL GRADE SHELL BE <u>A36</u> U.N.O.		Justin Steel	
1				WF SHAPES <u>A992</u>	TUBES <u>A500 Gr B</u>	DETAILS OF Framing Plan	
2				CHANNELS <u>A992</u>	PIPES <u>A501 or A53</u>	CUSTOMER _____	
3				COATING <u>One S/C Red Oxide Primer</u>		ARCHITECT _____	
	REVISION DESCRIPTION	DATE	MADE BY	CHK BY	SHOPED	PROJECT _____	
	REF DWG <u>S11, S31</u>					LOCATION _____	
	APPROVAL	?	TO SHOP	?		DETAIL <u>Dg</u>	<u>8-19-09</u>
						CHK.R <u>tsd</u>	<u>9-1-09</u>
						JOB # _____	SHEET # <u>E1</u>

- BILL OF MATERIAL -

MARK	QTY	DESCRIPTION	LENGTH	REMARKS
1C1	2	Hss 6 x 6 x 4	12-11	
bpl	2	Bar 3/4 x 14"	1-2	
al	2	Bar 1/2 x 6	1-1	
1C2	2	Hss 6 x 6 x 4	14-0 3/4	
bpl	2	Bar 3/4 x 14"	1-2	
cpl	2	Bar 1/2 x 6	0-6	
cl	2	Bar 3/8 x 9	1-2	
1C3	1	Hss 6 x 6 x 4	15-0 3/4	
bpl	1	Bar 3/4 x 14"	1-2	
cpl	1	Bar 1/2 x 6	0-6	
dl	1	Bar 3/8 x 9	0-10 1/2	
el	1	Bar 3/8 x 6	0-7 1/8	
1C4	1	Hss 6 x 6 x 4	15-0 3/4	
bpl	1	Bar 3/4 x 14"	1-2	
cpl	1	Bar 1/2 x 6	0-6	
dl	1	Bar 3/8 x 9	0-10 1/2	
el	1	Bar 3/8 x 6	0-7 1/8	
1B1	1	W 12 x 14	16-11 3/4	
sa3	4	L 4 x 4 x 5/16	0-9	GOL=2 5/8
fl	8	1/2" Φ Threaded Stud	0-5	
1B2	2	W 14 x 22	28-2 1/2	
fl	28	1/2" Φ Threaded Stud	0-5	
gl	4	Bar 3/8 x 2 1/2	1-1	
1B3	2	W 12 x 14	11-8	
fl	12	1/2" Φ Threaded Stud	0-5	
1B4	1	W 10 x 12	16-6	
1TR1	48	3/4" Φ Threaded Rod	1-6	F1554
B7	20	3/4" Φ A325	0-1 3/4	Field Bolts
B8	22	3/4" Φ A325	0-2	
	42	3/4" Φ Washers		
	42	3/4" Φ Nuts		



48 Rods MK: 1TR1
Ref Sect 6/53
Steel Grade ASTM F1554 Note 6/55

**Plans For Approval
& Not Construction**

Usable Template Mark Letters
A-Z 0-9 . / - ' () [] { } ~ * & # % ^ ` ~ ~ ~
Texas Steel Detailers
FN: Texas-CU-DI-akg

- DESCRIPTION OF REVISIONS MADE TO DRAWING -

REVISION	DESCRIPTION	DATE	MADE BY	CHK BY	SHOPED
1					
2					
3					

REF DWG S11, S31

MATERIAL GRADE SHELL BE	A36	U.N.O.
WF SHAPES	A992	TUBES A500 Gr B
CHANNELS	A992	PIPES A501 or A53
COATING	One S/C Red Oxide Primer	
13/16" Φ OPEN HOLE	1/4" FILLETS	E700XX ELECTRODES
APPROVAL	? TO SHOP 8-24-04	

Justin Steel

DETAILS OF Columns & Beams

CUSTOMER _____

ARCHITECT _____

PROJECT _____

LOCATION _____

DETAIL Dg 8-21-04

CHK.R tsd

JOB # _____

SHEET # **D1**