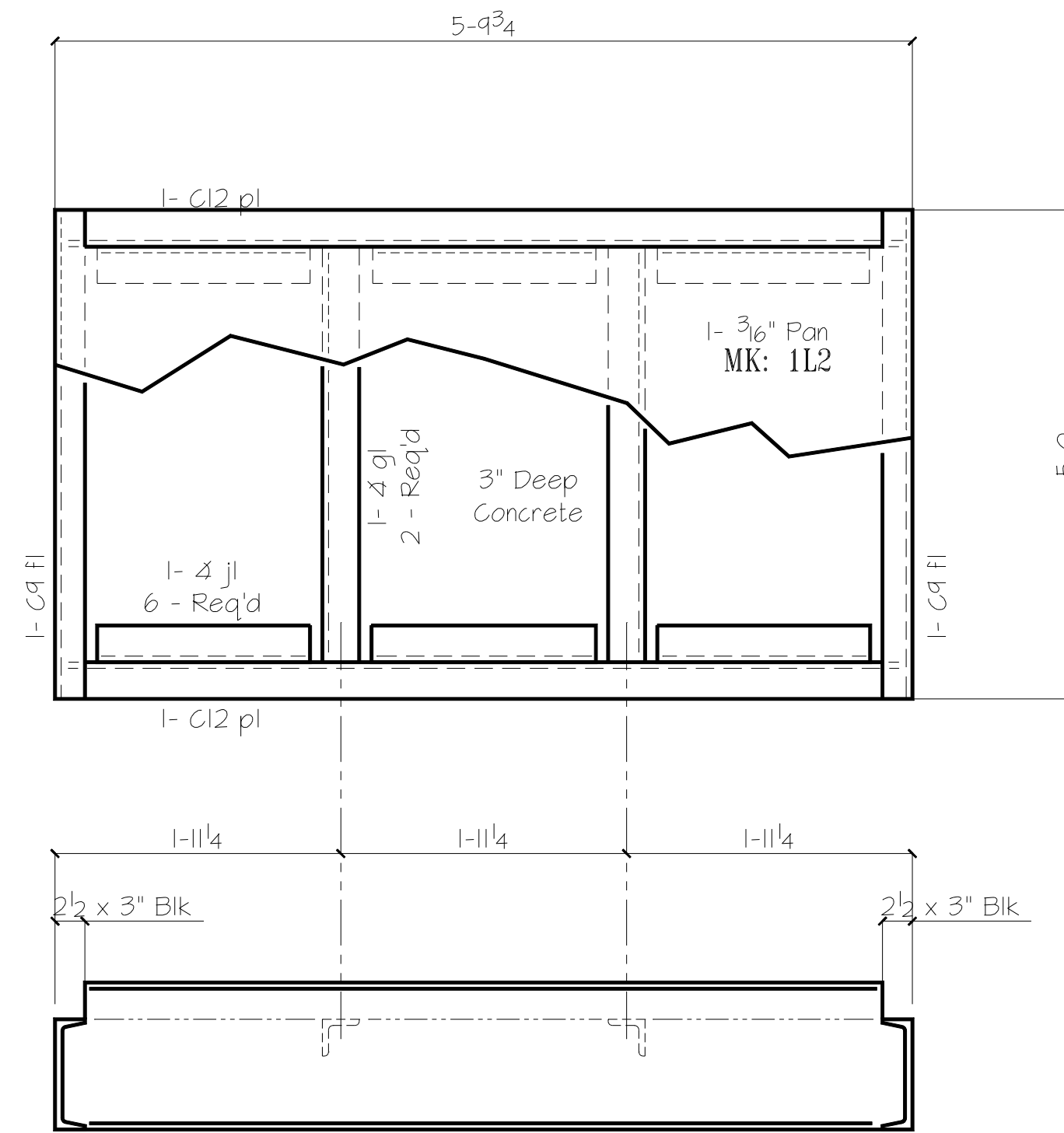
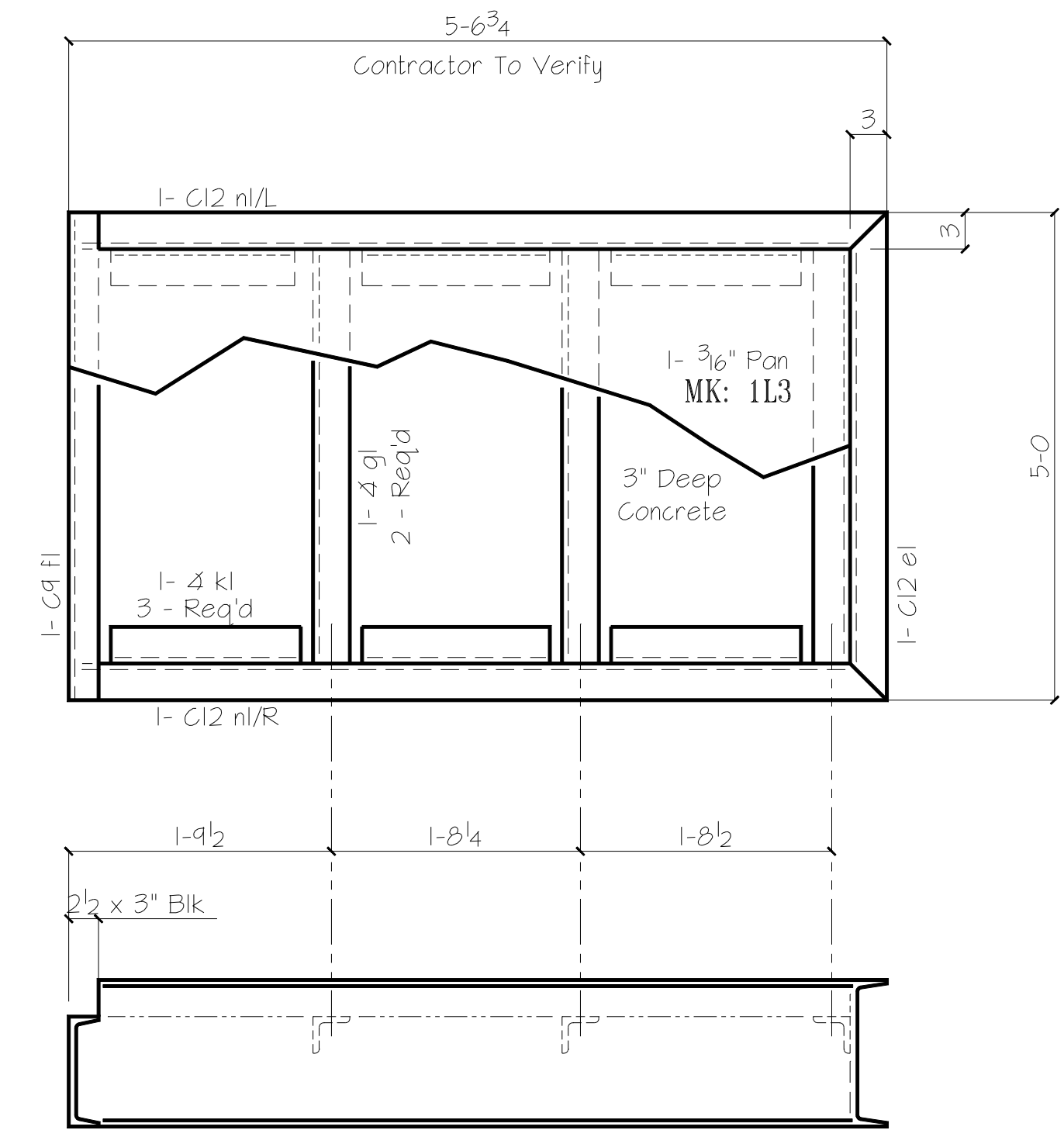


1 Landing MK: 1L1



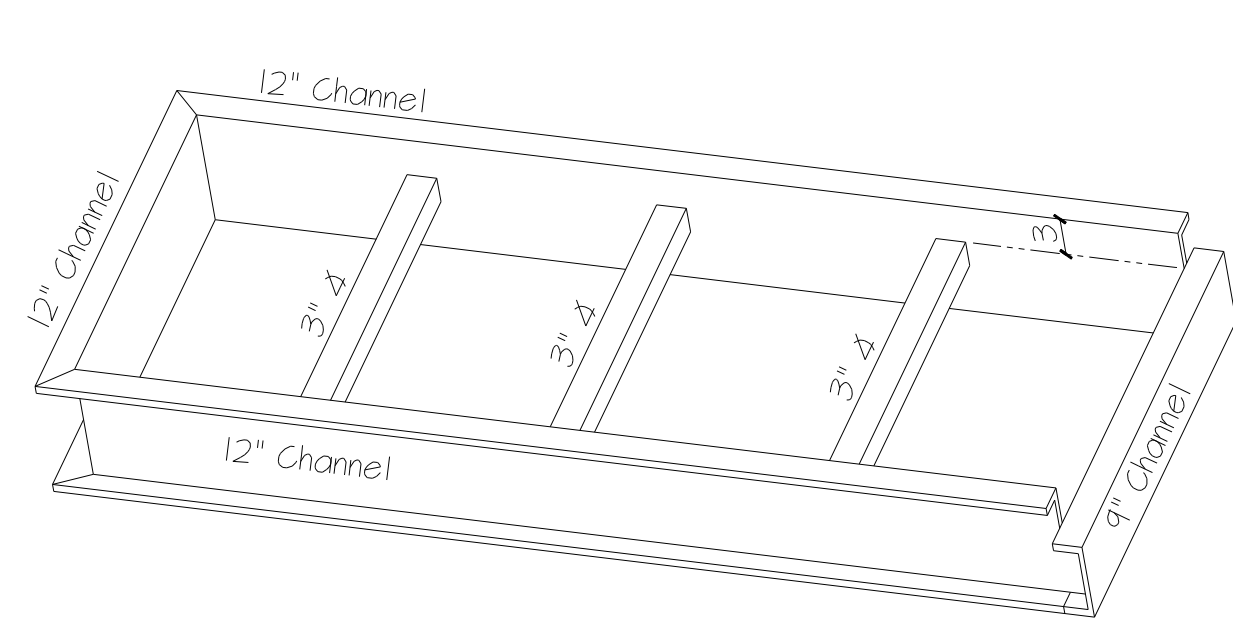
1 Landing MK: 1L2



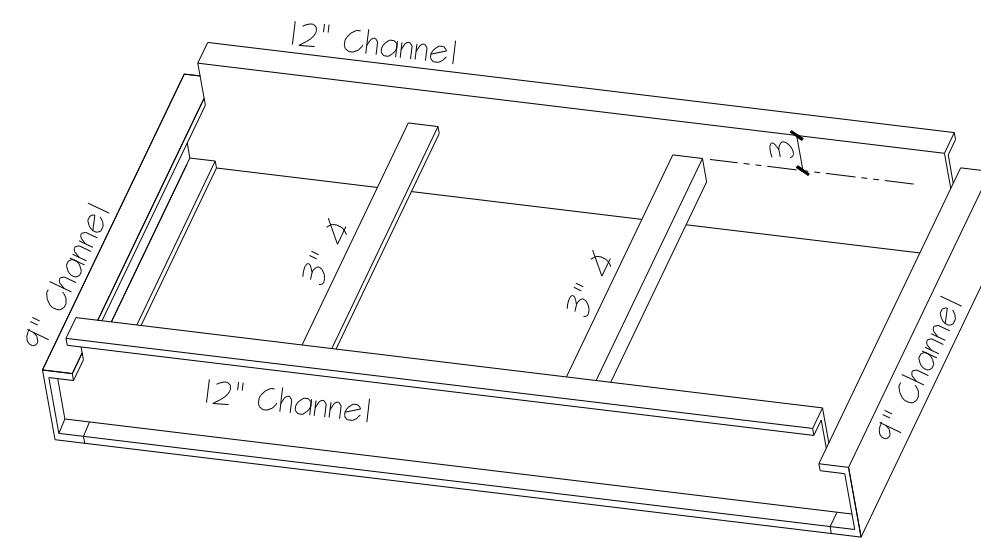
1 Landing MK: 1L3

- BILL OF MATERIAL -

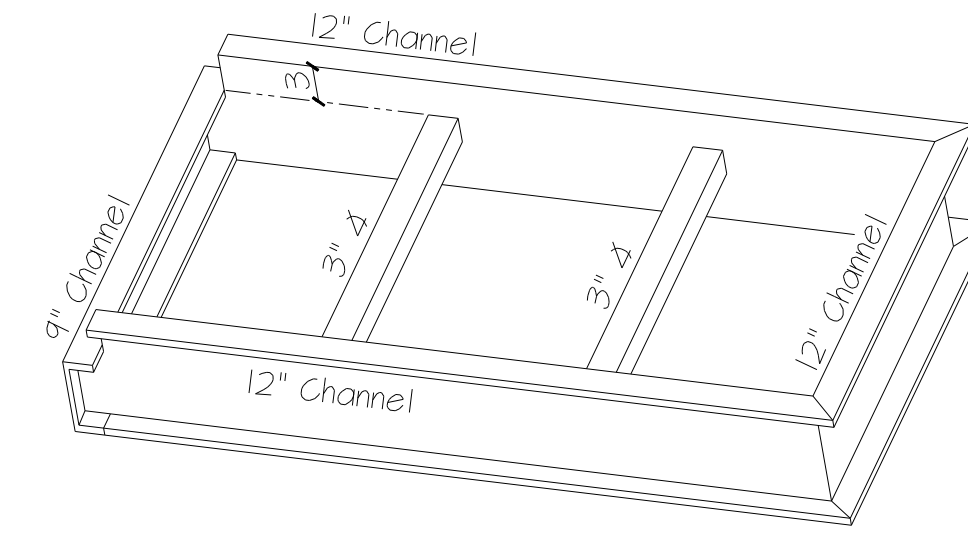
PART MARK	QTY	DESCRIPTION	LENGTH	REMARKS
1BK1	3	Bracket		
al	3	Hss 6 x 4 x 1/4	5-11 3/4	
bl	3	Hss 6 x 4 x 1/4	5-3 5/8	
cl	3	Bar 1/4 x 4	0-6	
1L1	1	3/16" PL 54"	6-6 1/4	
el	1	C 12 x 20.7	5-0	Miter 2 Ends
fl	1	C 9 x 13.4	5-0	
gl	3	4 3 x 3 x 1/4	4-6	
hl	6	4 3 x 3 x 1/4	1-2	
ml L/R	1/1	C 12 x 20.7	6-9	See Detail
1L2	1	3/16" PL 54"	5-9 1/4	
fl	2	C 9 x 13.4	5-0	
gl	2	4 3 x 3 x 1/4	4-6	
jl	6	4 3 x 3 x 1/4	1-5	
pl	2	C 12 x 20.7	5-9 1/4	See Detail
1L3	1	3/16" PL 54"	5-3 3/4	
el	1	C 12 x 20.7	5-0	Miter 2 Ends
fl	1	C 9 x 13.4	5-0	
gl	2	4 3 x 3 x 1/4	4-6	
kl	6	4 3 x 3 x 1/4	1-3 1/2	
nl L/R	1/1	C 12 x 20.7	5-6 1/2	See Detail
1C1	3	C 5 x 9	20-0	Field Trim
1M1	1	T5 4 x 2 x 3/16	6-0	Field Trim



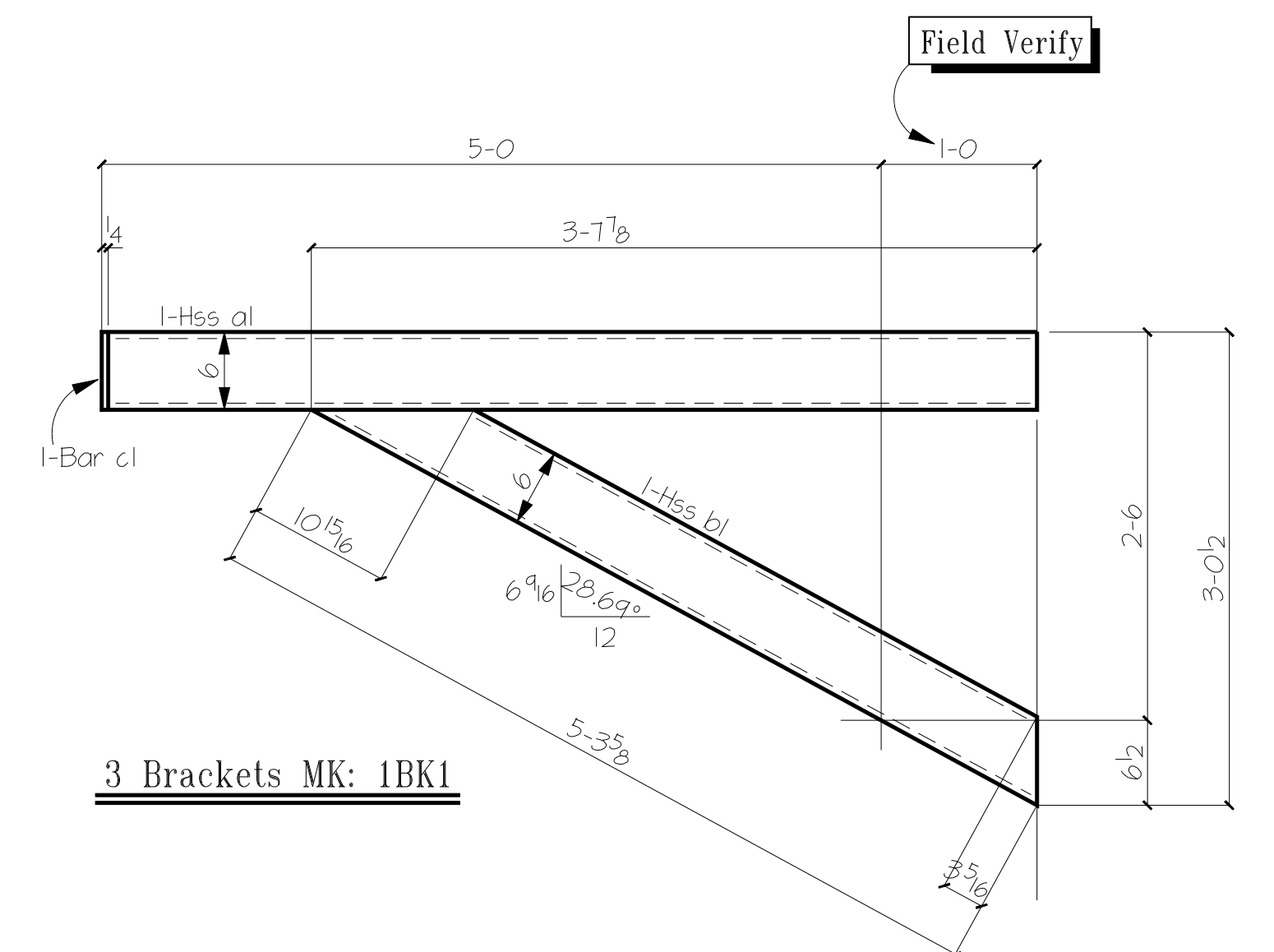
3D View of 1L1



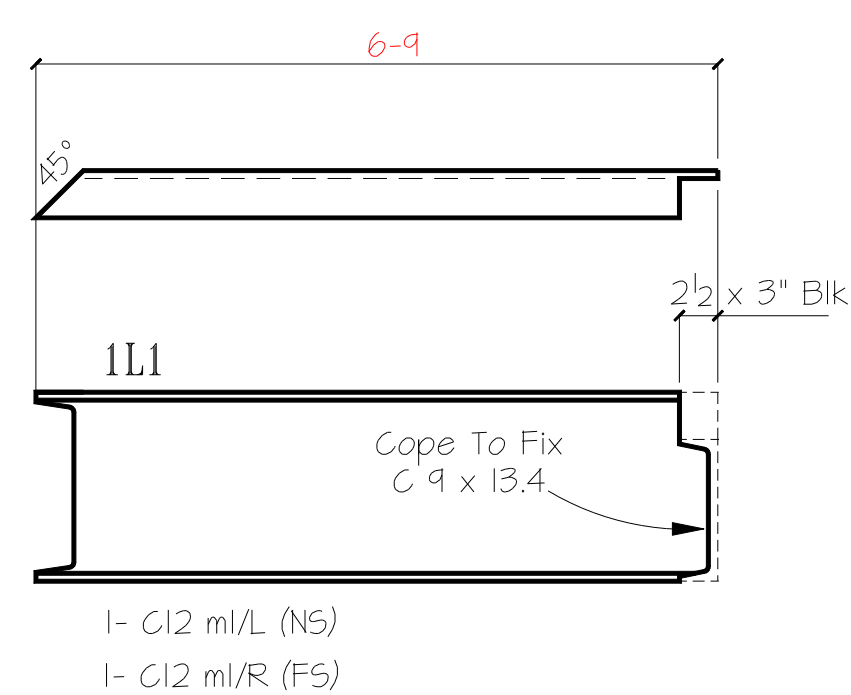
3D View of 1L2



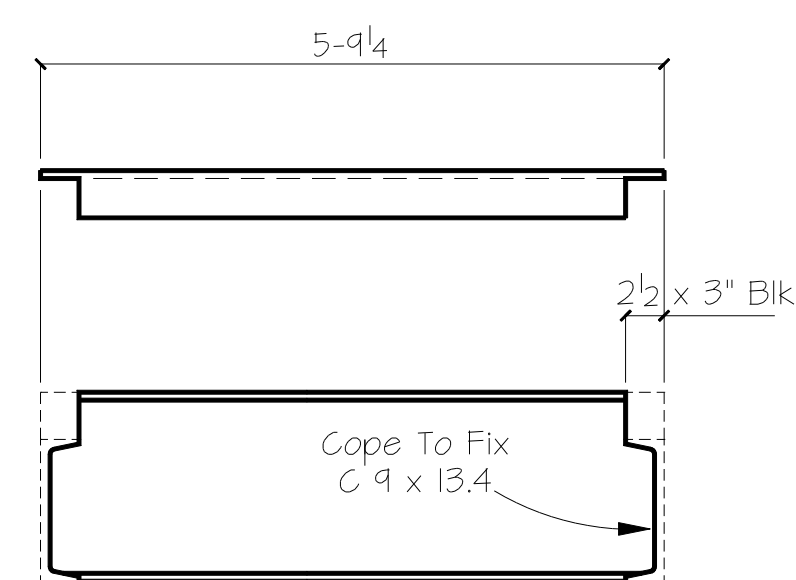
3D View of 1L3



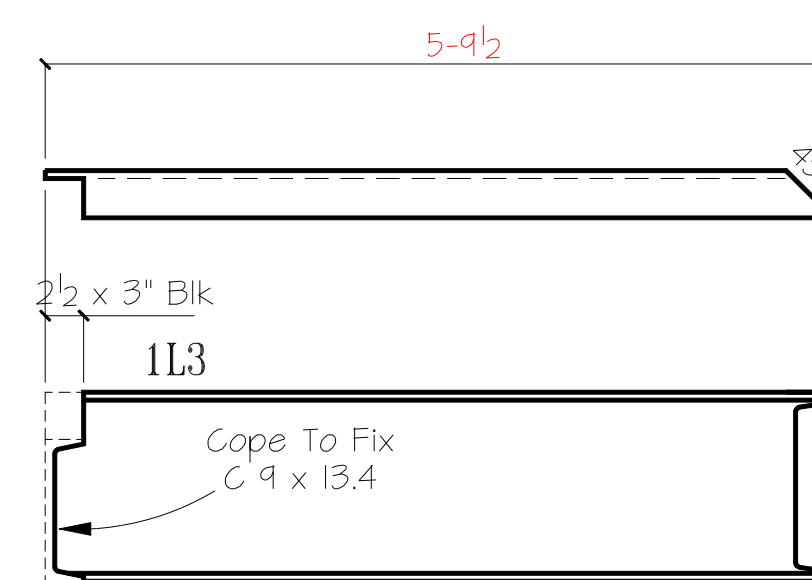
3 Brackets MK: 1BK1



1- C12 ml/L (NS)
1- C12 ml/R (FS)



2- C12 pl



1- C12 nl/L (NS)
1- C12 nl/R (FS)

- DESCRIPTION OF REVISIONS MADE TO DRAWING -

NO.	REVISION DESCRIPTION	DATE	MADE BY	CHK BY	SHOPED
1					
2					
3					

REF DWG S1 56

- Texas Steel Detailers -

MATERIAL GRADE SHELL BE A36 U.N.O.
WF SHAPES A992 TUBES A500
CHANNELS A992 PIPES A501 or A53

COATING One S/C Red Oxide Primer

13/16" ^Ø OPEN HOLE 1/4" FILLETS E700XX ELECTRODES

APPROVAL 6-23-09 TO SHOP ?

- Texas Steel Detailers -

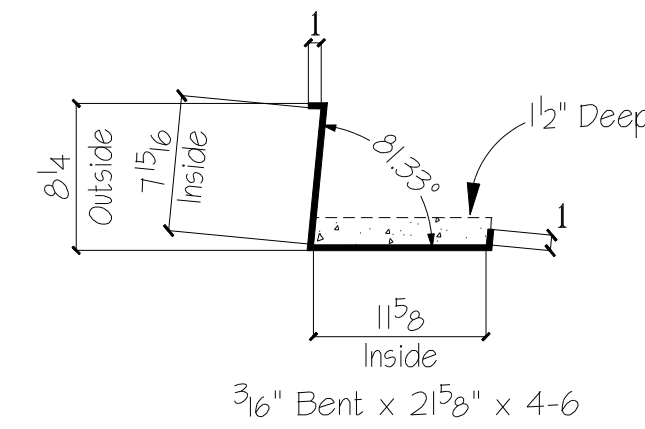
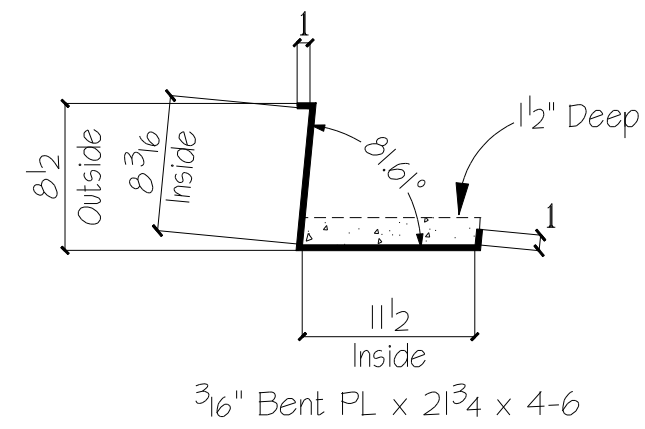
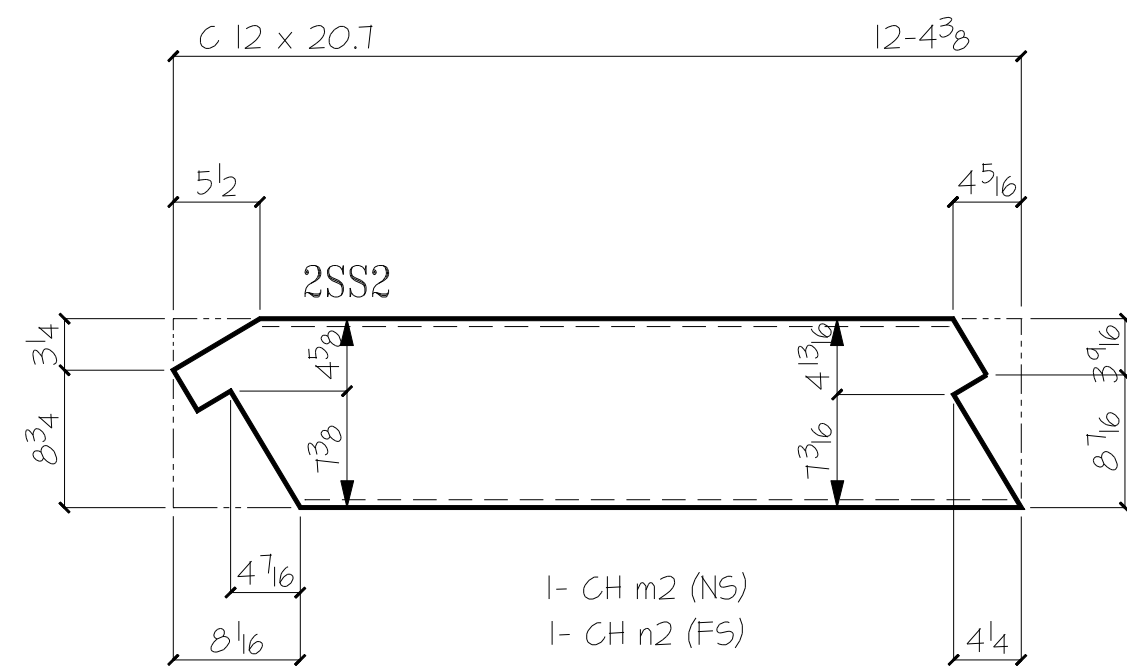
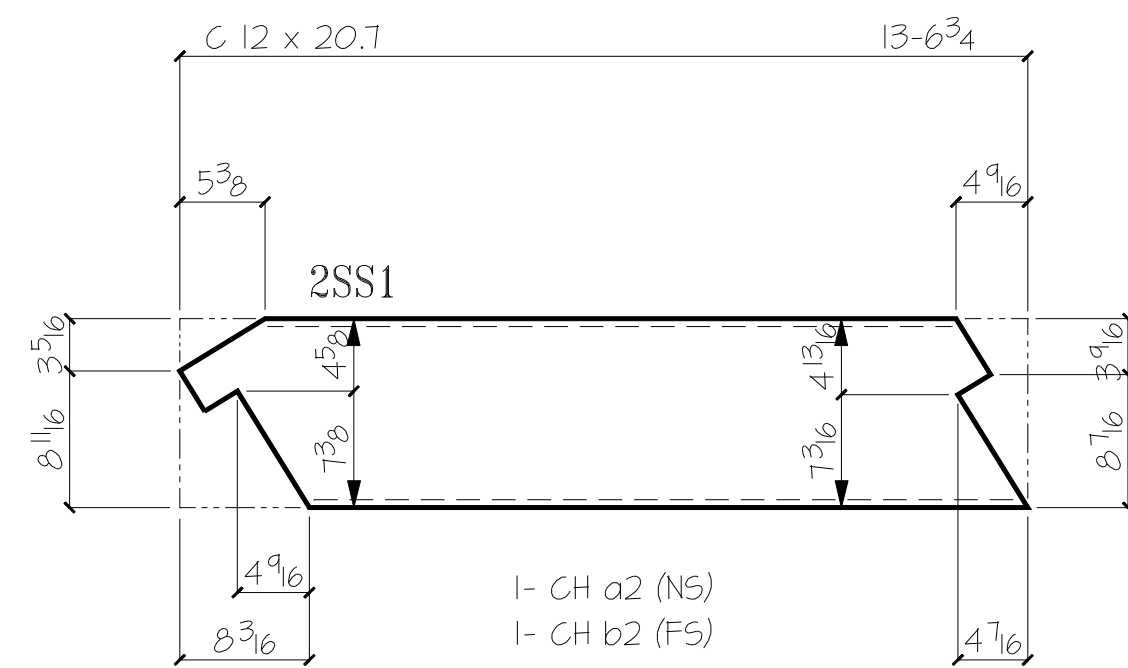
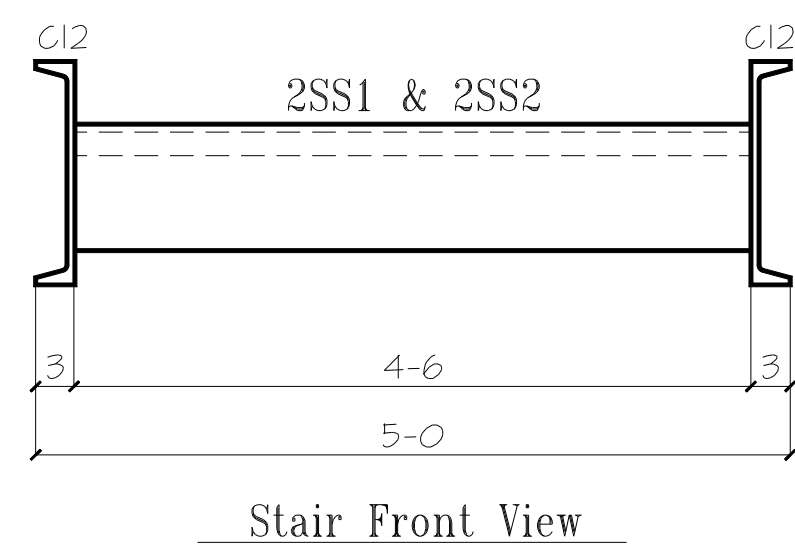
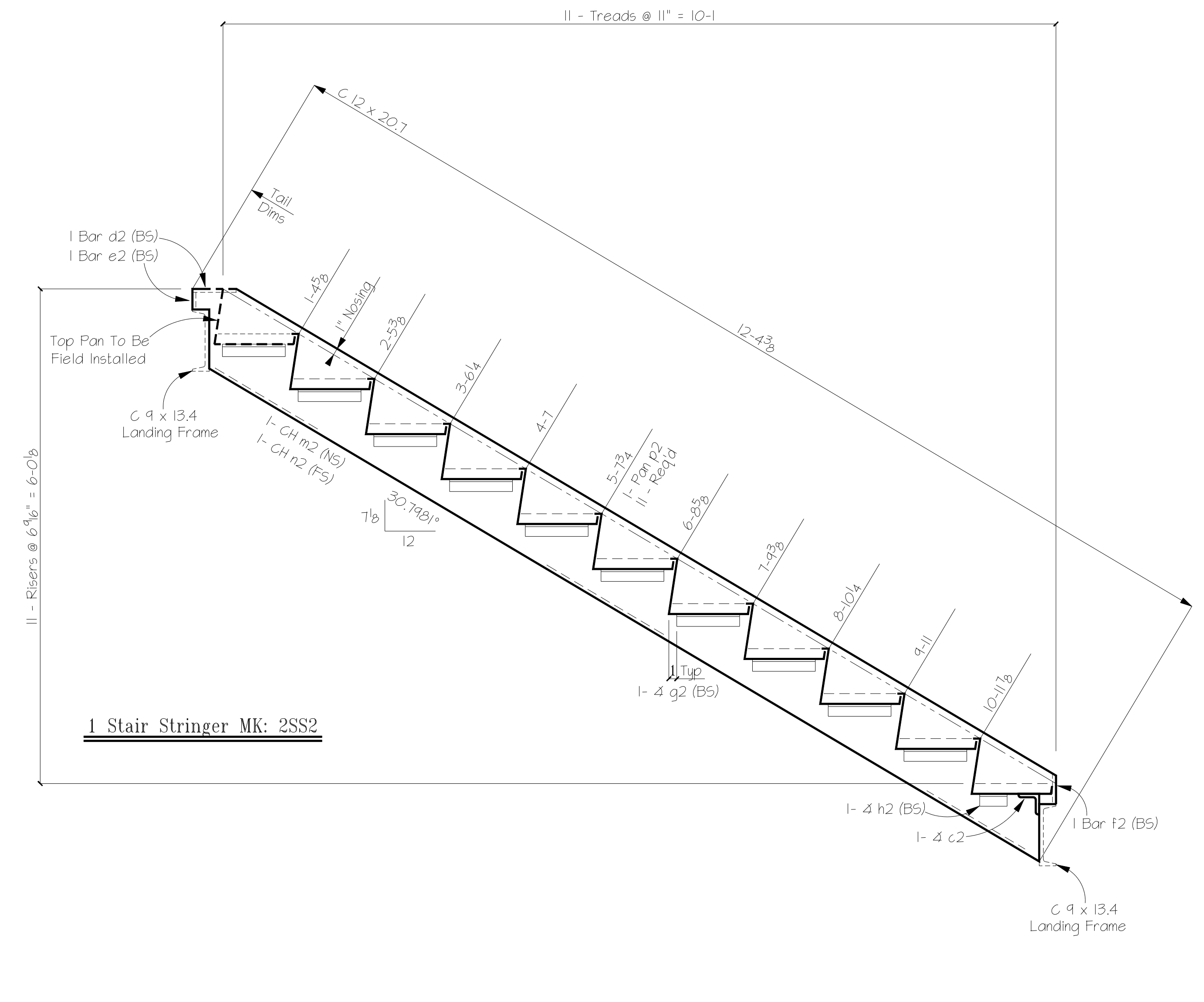
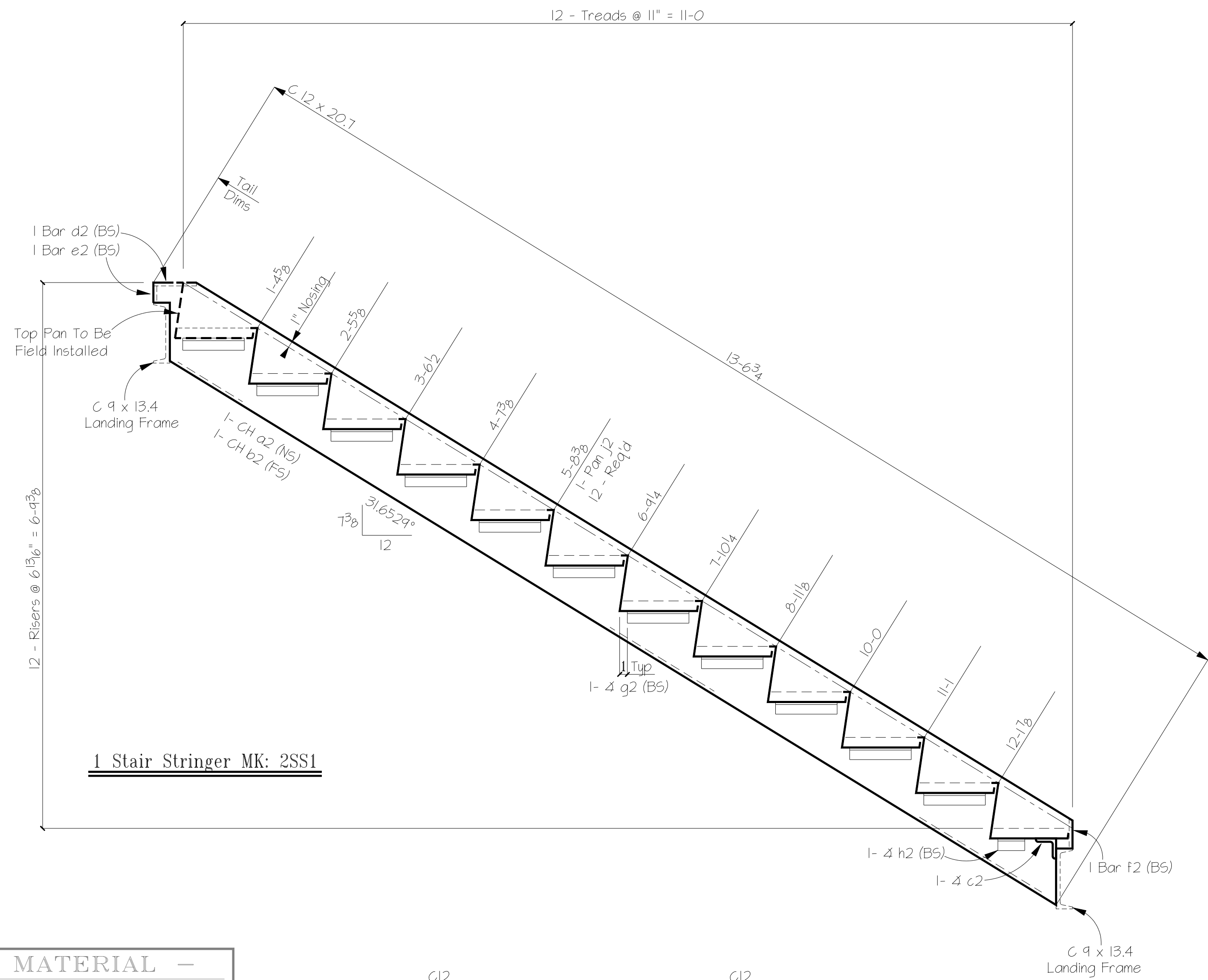
DETAILS OF Stair Landing

CUSTOMER _____
ENGINEER _____
PROJECT _____
LOCATION _____

DETAIL Dg 6-18-09 JOB # _____ SHEET # _____
CHK.R tsd 6-23-09 Abel D1

Field Verify

Usable Template Letters
abcdefghijklmnopqrstuvwxyz
TSD FN# Abel-Olding



Detail of Bent PL j2
12 - Req'd in Total Per 2551

Detail of Bent PL p2
11 - Req'd in Total Per 2552

Usable Template Mark Letters
A-Z a-z 0-9 . / - ' " & # \$ % & # \$ % & # \$ % & # \$ %
TSD P/N: abel-01.dwg

- BILL OF MATERIAL -				
PART MARK	QTY	DESCRIPTION	LENGTH	REMARKS
2SS1	1	Stair Stringer		
a2	1	C 12 x 20.7	13'-6 3/4"	See Detail
b2	1	C 12 x 20.7	13'-6 3/4"	See Detail
c2	1	4 3 x 3 x 1/4	4'-6"	
d2	2	Bar 1/4 x 2 1/2	0'-6 1/4"	
e2	2	Bar 1/4 x 2 1/2	0'-2 1/2"	
f2	2	Bar 1/4 x 2 1/2	0'-4 1/8"	
g2	22	4 1 1/2 x 1 1/2 x 3/16	0'-9"	
h2	2	4 1 1/2 x 1 1/2 x 3/16	0'-5"	
j2	12	3/16" Bent PL x 2 1/4"	4'-6"	Buy Out
2SS2	1	Stair Stringer		
m2	1	C 12 x 20.7	12'-4 3/8"	See Detail
n2	1	C 12 x 20.7	12'-4 3/8"	See Detail
c2	1	4 3 x 3 x 1/4	4'-6"	
d2	2	Bar 1/4 x 2 1/2	0'-6 1/4"	
e2	2	Bar 1/4 x 2 1/2	0'-2 1/2"	
f2	2	Bar 1/4 x 2 1/2	0'-4 1/8"	
g2	20	4 1 1/2 x 1 1/2 x 3/16	0'-9"	
h2	2	4 1 1/2 x 1 1/2 x 3/16	0'-5"	
p2	11	3/16" Bent PL x 2 1/2"	4'-6"	Buy Out

- DESCRIPTION OF REVISIONS MADE TO DRAWING -				
1				
2				
3				
	REVISION DESCRIPTION	DATE	MADE BY	CHK BY
	REF DWG S1 56			

MATERIAL GRADE SHELL BE	A36	U.N.O.
WF SHAPES	A992	TUBES A500
CHANNELS	A992	PIPES A501 or A53
COATING	One S/C Red Oxide Primer	
13/16" OPEN HOLE	1/4" FILLETS	E700XX ELECTRODES
APPROVAL	6-23-09	TO SHOP ?

- Texas Steel Detailers -			
DETAILS OF Stair Stringers			
CUSTOMER		JOB #	SHEET #
ENGINEER		Abel	D2
PROJECT			
LOCATION			
DETAIL Dg	6-18-09		
CHK.R	tsd	6-23-09	