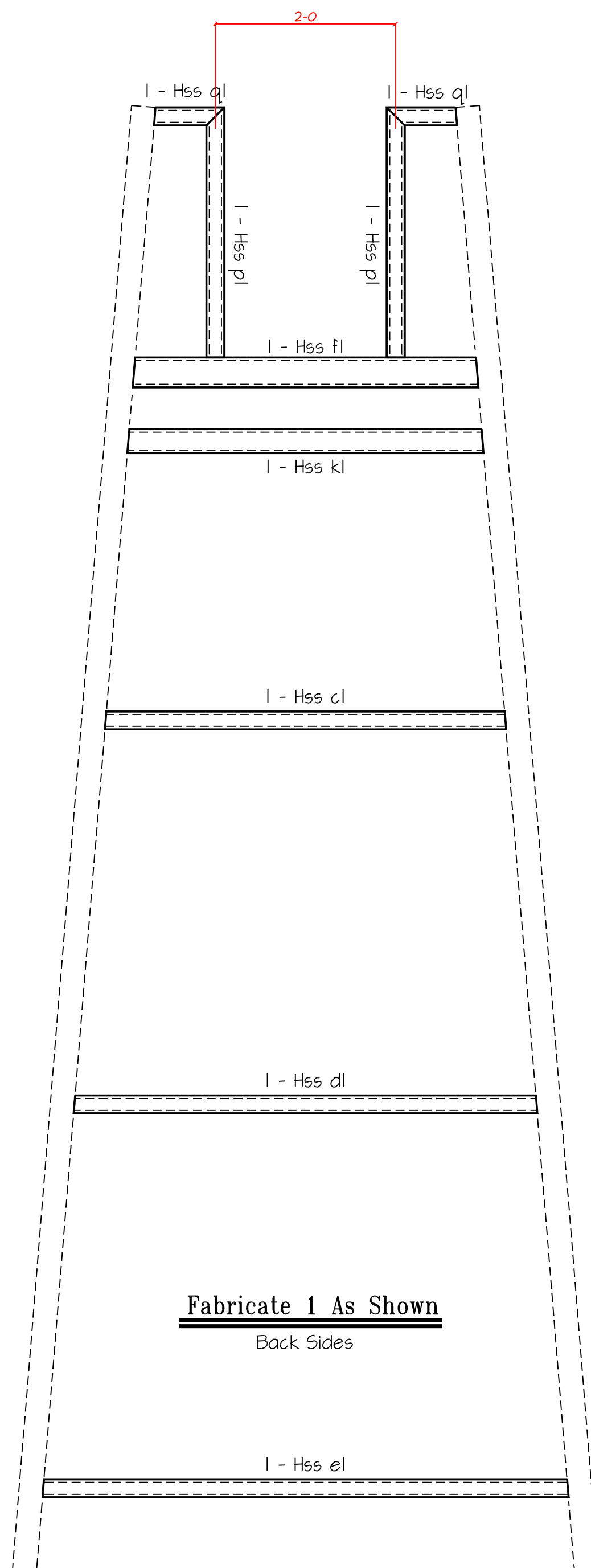
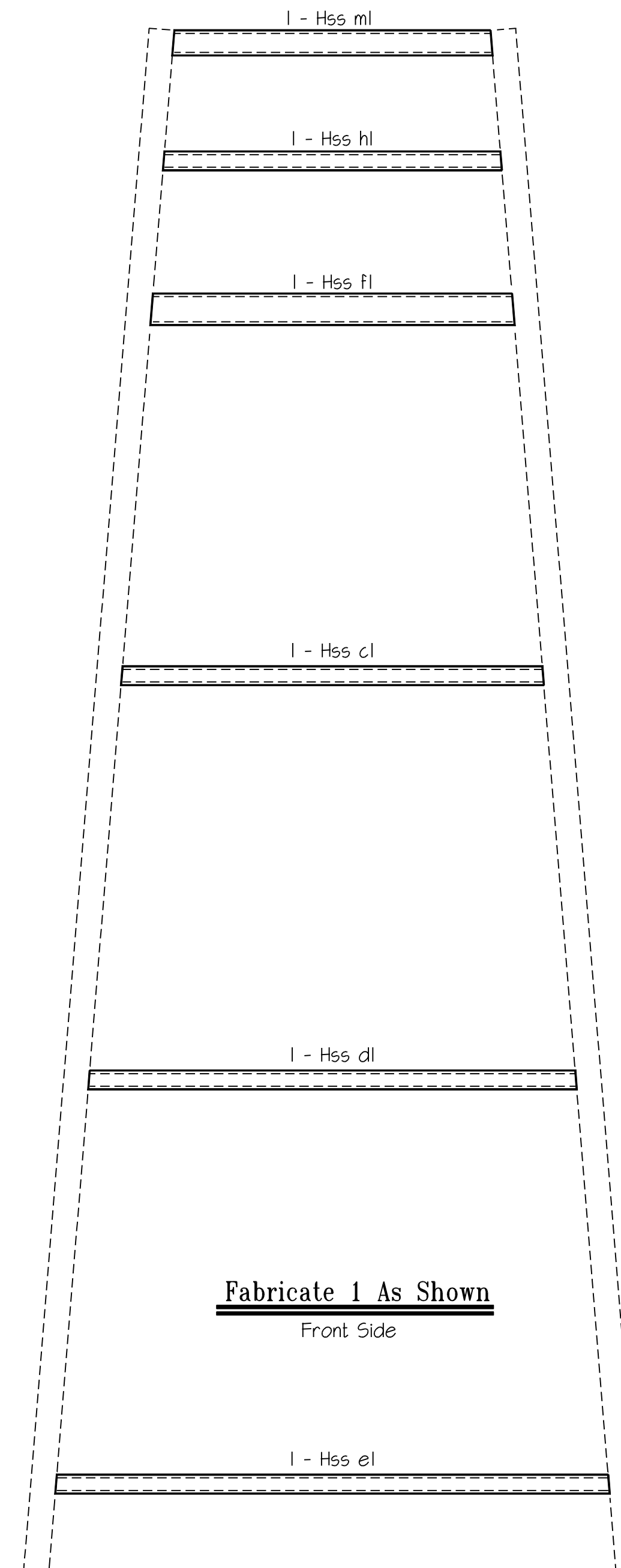


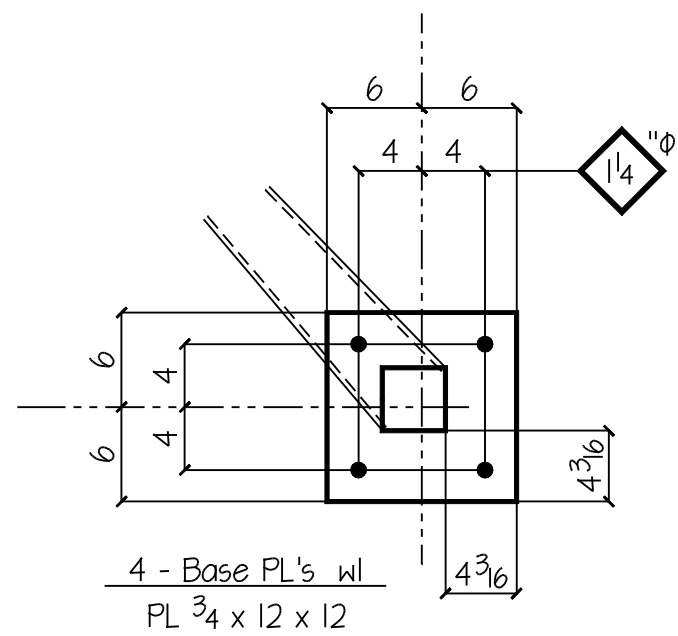
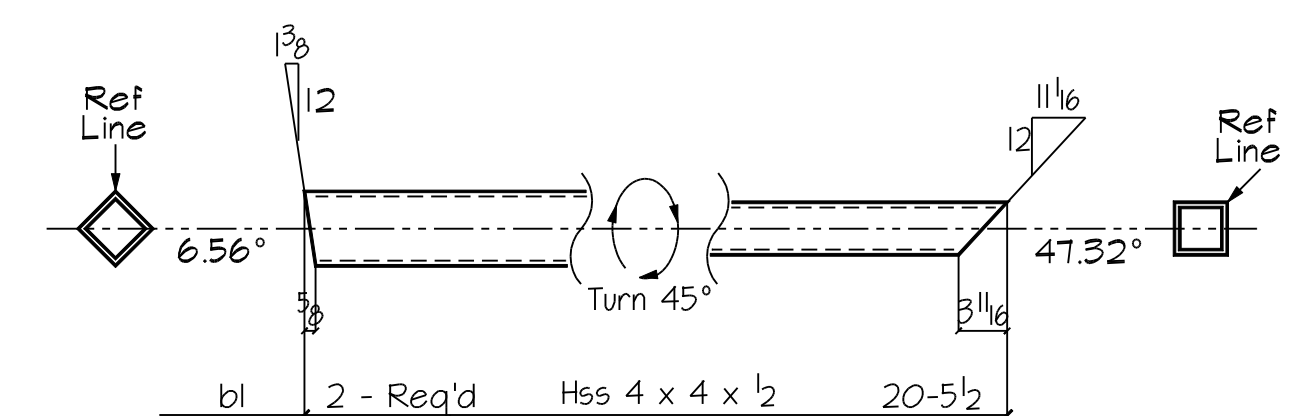
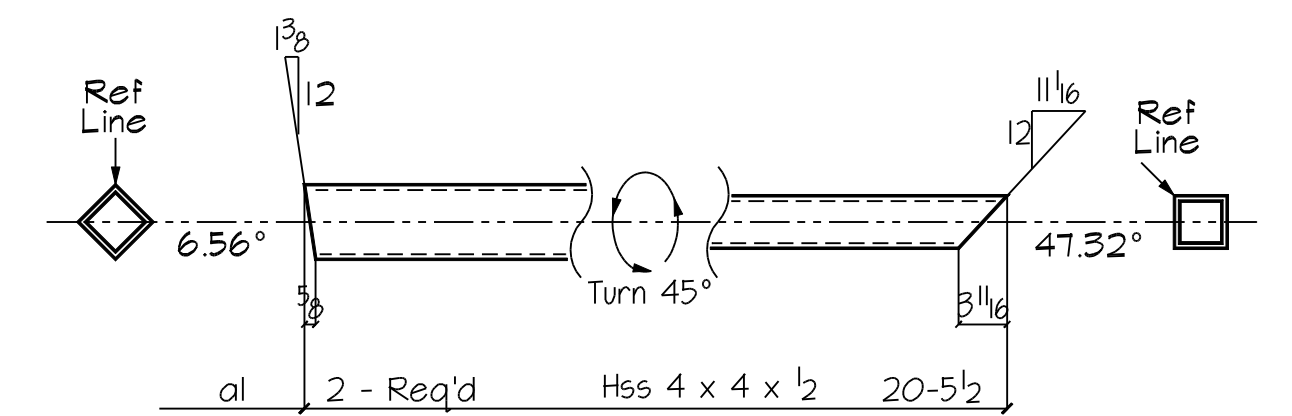
Fabricate 2 As Shown
Right And Left Sides



Fabricate 1 As Shown
Back Sides

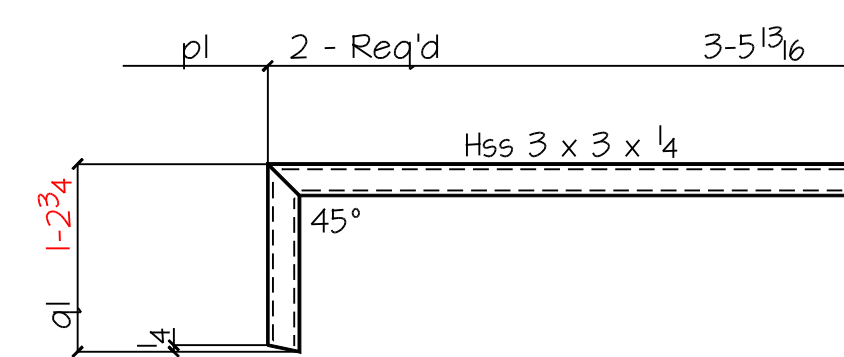
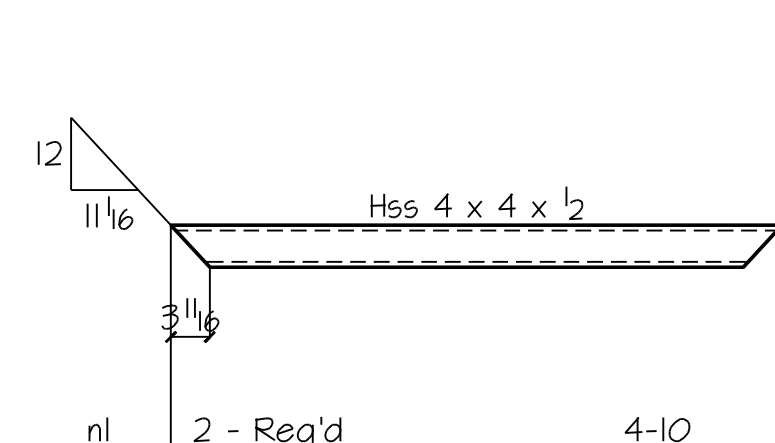
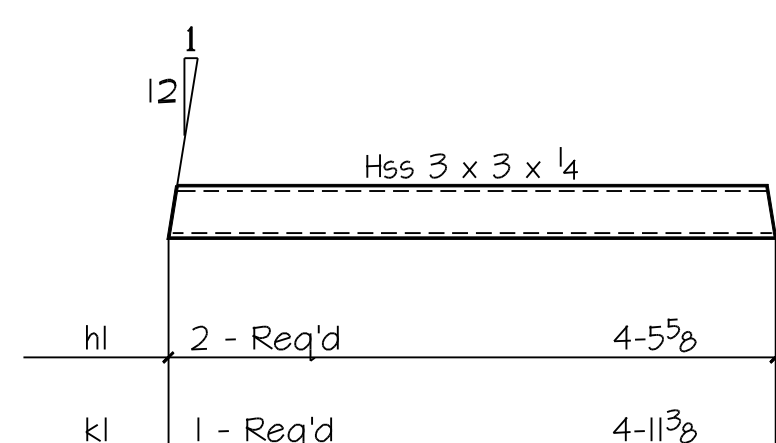
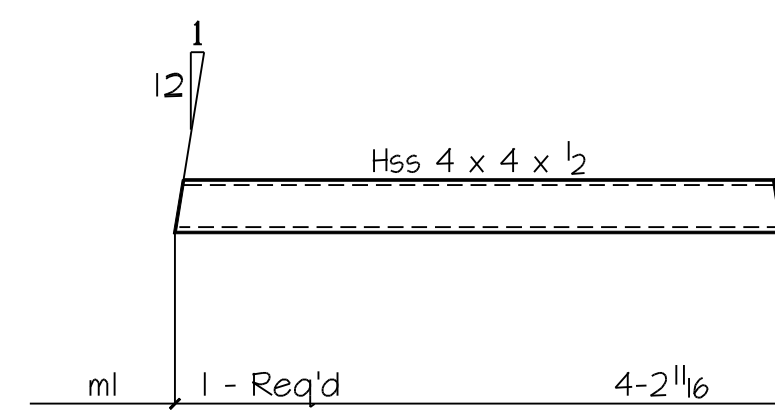
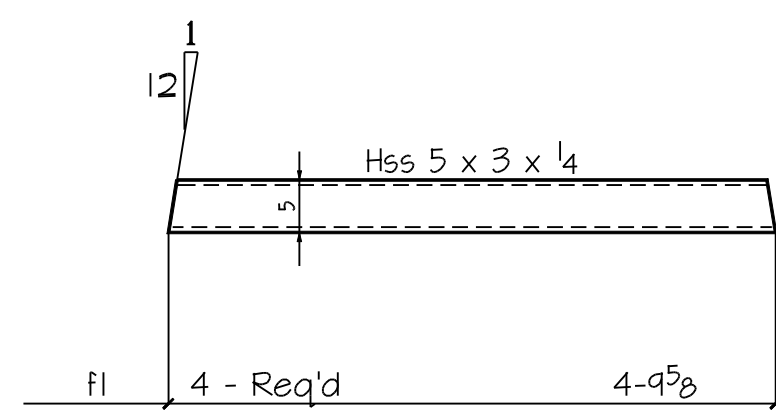


Fabricate 1 As Shown
Front Side



SECTION BP

	Hss 3 x 3 x 1/4	
cl	4 - Req'd	5-6 7/8
dl	4 - Req'd	6-5 5/16
el	4 - Req'd	7-3 11/16



- DESCRIPTION OF REVISIONS MADE TO DRAWING -

1		
2		
3		
4		
REF DWG		

- UNLESS NOTED OTHERWISE -

1/4" FILLETS	MATERIAL GRADE SHELL BE	A36	U.N.O.
	WF SHAPES	A572	TUBES A500
	CHANNELS	A572	PIPES A501 or A53
13/16" OPEN HOLE	REF SCHEDULE		
	COATING	Hot Dip Galvanized	

AWF

DETAILS OF Tower Framing
 PROJECT Camera Tower
 LOCATION
 CUSTOMER
 ARCHITECT
 ENGINEER

DETAIL DY 2-28-08	SHOP CODE	SHEET #	REV #
CHK.R	Port Hood	D 1	

FN= cambr-001.dwg