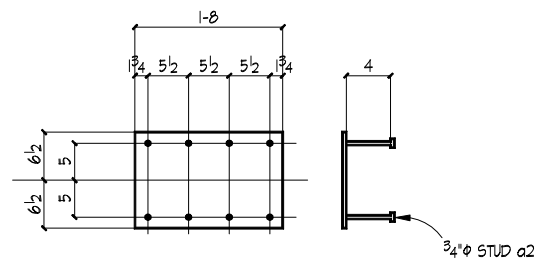
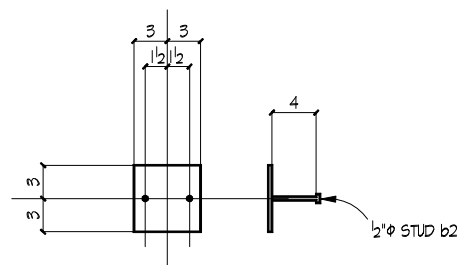


**16 PLATES MK:2PL1**  
 16 @ Front Panel LP22 Ref 2/56, 3/56



**72 PLATES MK:2PL2**  
 12 x 16 = 180 @ Spandrel 9/55

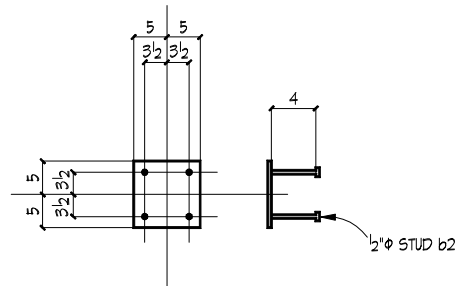


**40 PLATES MK:2PL3**  
 @ Deck Angle 1/54 & 5/54

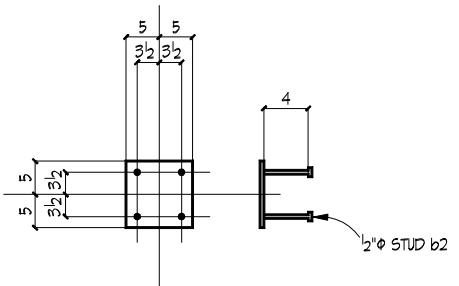


**2 PLATES MK:2A1**  
 @ Girder Beam 1/54

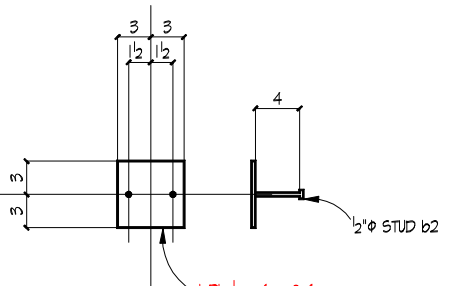
2PL1	18	BAR 1/2 x 4	3-0
a2	180	3/4" STUD	0-4
2PL2	72	BAR 1/2 x 13	1-8
a2	567	3/4" STUD	0-4
2PL3	40	BAR 1/4 x 6	0-6
b2	80	1/2" STUD	0-4
2A1	2	L 5 x 5 x 1/2	1-2
a2	8	3/4" STUD	0-4
2PL4	2	BAR 3/8 x 10	0-10
b2	8	1/2" STUD	0-4
2PL5	56	BAR 1/2 x 10	0-10
b2	224	1/2" STUD	0-4
2PL6	18	BAR 1/2 x 6	0-6
b2	32	1/2" STUD	0-4
2PL7	69	BAR 3/8 x 6	0-8
a2	138	3/4" STUD	0-4
2PL8	6	BAR 3/8 x 12	1-0
a2	24	3/4" STUD	0-4
2PL9	26	BAR 1/2 x 6 1/2	0-11
c2	78	5/8" STUD	0-6
2PL10	8	BAR 3/8 x 8	0-8
b2	16	1/2" STUD	0-4
2PL11	6	BAR 1/2 x 12	1-4
a2	24	3/4" STUD	0-4
2PL12	9	BAR 1/2 x 10	0-10
a2	36	3/4" STUD	0-4
2C1	6	C 8 x 11.5	1-0
e2	6	1/2" STUD	0-8
2A2	36	L 3 1/2 x 3 1/2 x 1/4	0-9
b2	72	1/2" STUD	0-4
2C2	3	C 8 x 11.5	1-0
e2	9	1/2" STUD	0-8
2C3	3	C 8 x 11.5	1-0
e2	9	1/2" STUD	0-8
2C4	4	C 8 x 11.5	1-0
e2	12	1/2" STUD	0-8
2C5	4	C 8 x 11.5	1-0
e2	12	1/2" STUD	0-8



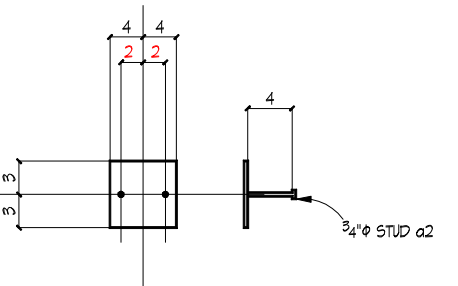
**2 PLATES MK:2PL4**  
 @ Girder Beam 1/54



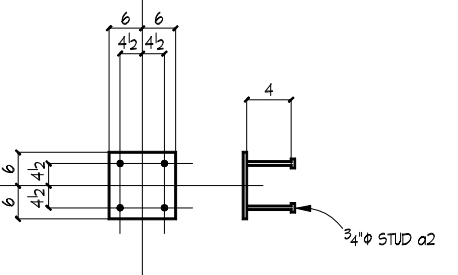
**56 PLATES MK:2PL5**  
 @ Joist 4/54



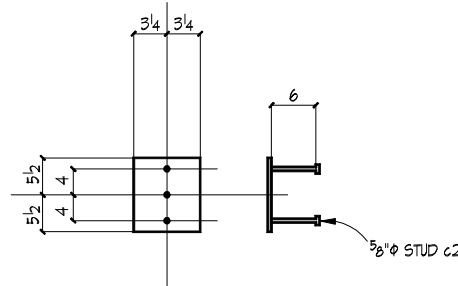
**18 PLATES MK:2PL6**  
 18 @ 90° Corners 7/55



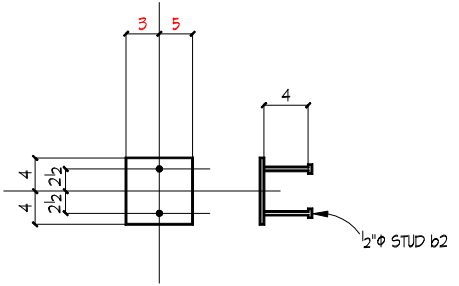
**69 PLATES MK:2PL7**  
 @ Joist Bracing 7,8,9,10 /54



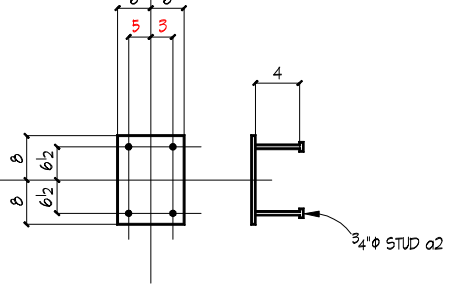
**6 PLATES MK:2PL8**  
 @ Em Canopy 7/54



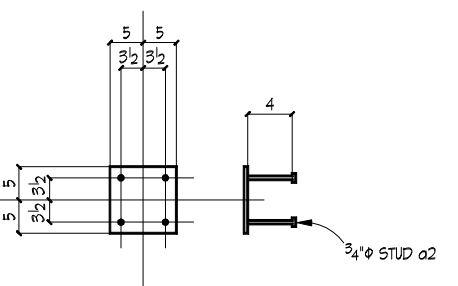
**26 PLATES MK:2PL9**  
 @ TS/Em Canopy 11/55



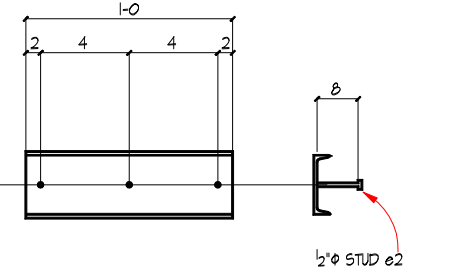
**8 PLATES MK:2PL10**  
 @ Roof TS 12/54



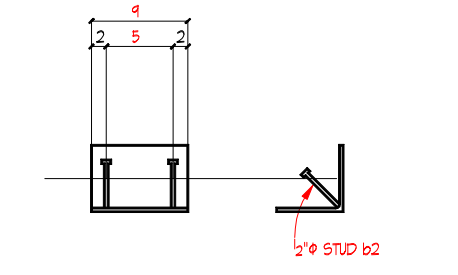
**6 PLATES MK:2PL11**  
 @ Roof Canopy 12/54



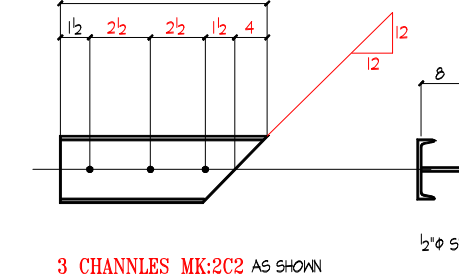
**9 PLATES MK:2PL12**  
 4 @ Canopy Brace Rod 7/54, 13/54  
 5 @ Canopy Brace Rod 8/54, 13/54



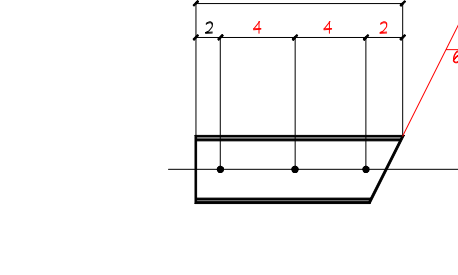
**23 CHANNELS MK:2C1**  
 @ Panel Footing 1/53



**36 ANGLES MK:2A2**  
 @ Panel Joints 5/55



**3 CHANNELS MK:2C2 AS SHOWN**  
**3 CHANNELS MK:2C3 OPP HAND**  
 @ Panel Footing 1/53 90° Corners



**2 CHANNELS MK:2C4 AS SHOWN**  
**2 CHANNELS MK:2C5 OPP HAND**  
 @ Panel Footing 1/53 45° Corners

CONTRACTOR TO VERIFY DIMS & QTYs

None \*  
 No Coating Plan Steel

09-28-04 09-30-04  
 09-30-04

A36

Tilt Wall Embedments  
 Silverado Station Plan  
 1604 @ Bandera Road  
 Browning Construction  
 Hodges & Associates  
 Hunt & Joiner, Inc

DY 09-21-04  
 MS 09-30-04

029-04  
 2