

2 FRAMES MK:5F1
Ref 5/A1, 11/54, 12/54

CONTRACTOR TO VERIFY CUT LENGTH WITH TITLWALL DRINGS

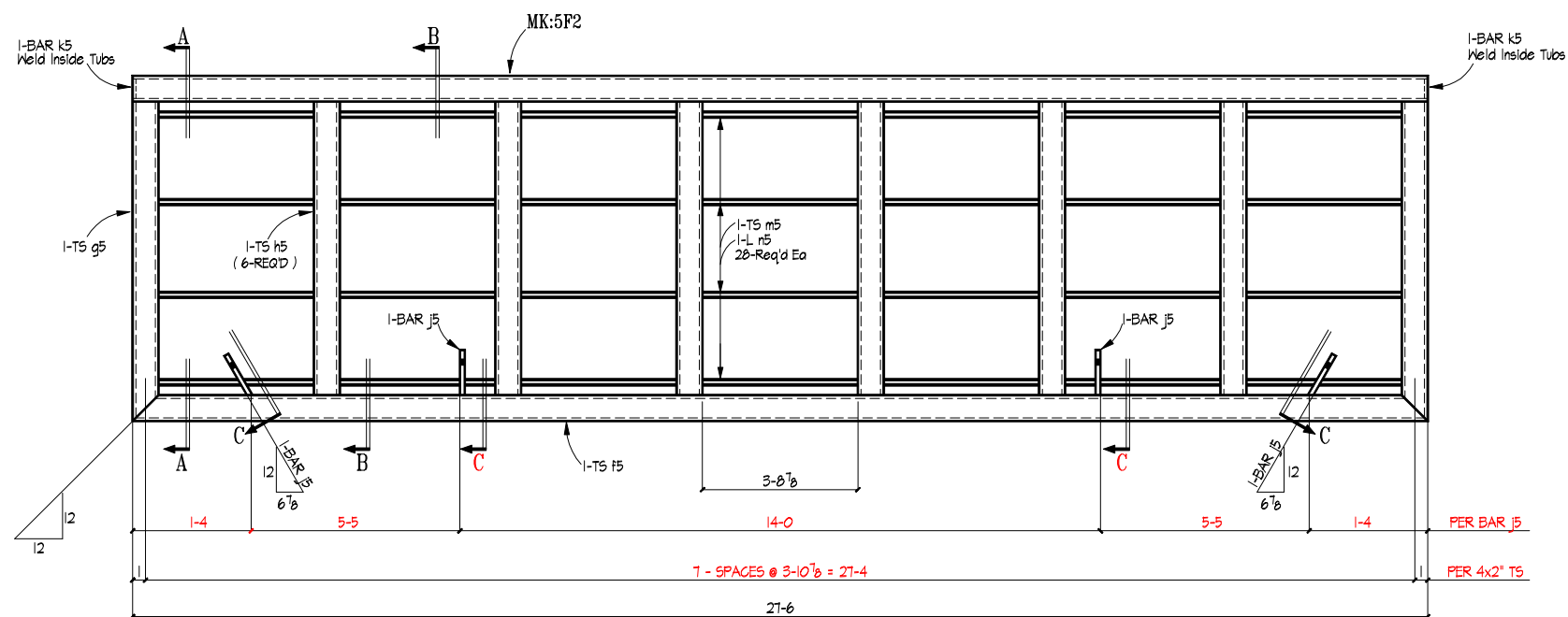
5B1	2-BEAMS (TS 8 x 6 x 3/8) Window Type "W1"	11-10
5B2	2-BEAMS (TS 8 x 6 x 3/8) Window Type "W2"	18-0 1/2
5B3	ONE-BEAM (TS 8 x 6 x 3/8) Ref A2.1 / A2.1 Window Type "W3"	18-0 3/4

CONTRACTOR TO VERIFY CUT LENGTH WITH TITLWALL DRINGS

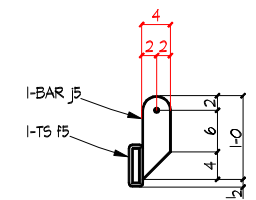
5B4	3-BEAMS (TS 8 x 6 x 3/8) Window Type "W4"	12-0
5B5	4-BEAMS (TS 8 x 6 x 3/8) Window Type "W5"	18-6 1/6
5B6	ONE-BEAM (TS 8 x 6 x 3/8) Ref A2.1 / A2.1 Window Type "W6"	27-6

— BILL OF MATERIAL —

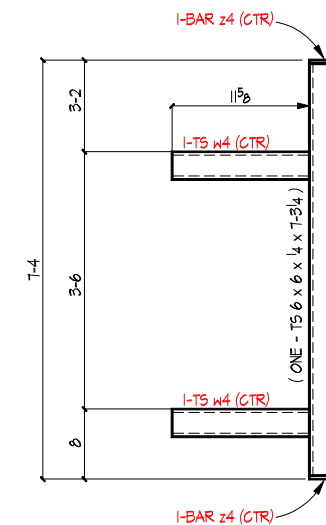
MARK	QTY	DESCRIPTION	LENGTH	REMARKS
5F1	2	TS 8 x 2 x 1/4	10-8	Galv
a5	2	TS 8 x 2 x 1/4	11-0	
b5	4	TS 8 x 2 x 1/4	4-9/4	
c5	6	TS 8 x 2 x 1/4	3-10	
5F2	1	TS 6 x 2 x 1/4	27-6	Galv
f5	1	TS 6 x 2 x 1/4	27-6	
g5	2	TS 6 x 2 x 1/4	4-10	
h5	6	TS 6 x 2 x 1/4	4-8	
j5	4	BAR 1/2 x 4	1-0	
k5	2	BAR 1/4 x 1/2	0-5 1/2	Inside Caps
m5	28	TS 1 x 1 x 1/8	3-8 1/8	
n5	28	L 1 x 1 x 1/8	3-8 1/8	
5B1	2	TS 8 x 6 x 3/8	11-10	
5B2	2	TS 8 x 6 x 3/8	18-0 1/2	
5B3	1	TS 8 x 6 x 3/8	18-0 3/4	
5B4	3	TS 8 x 6 x 3/8	12-0	
5B5	4	TS 8 x 6 x 3/8	18-6 1/6	
5B6	1	TS 8 x 6 x 3/8	27-6	
5F3	4	TS 6 x 6 x 1/4	7-3/4	
w5	8	TS 4 x 4 x 1/4	0-11 5/8	
z5	8	BAR 3/8 x 6	0-6	



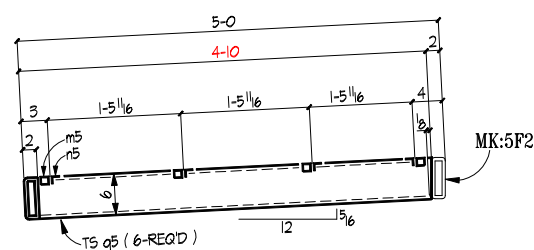
2 FRAMES MK:5F2



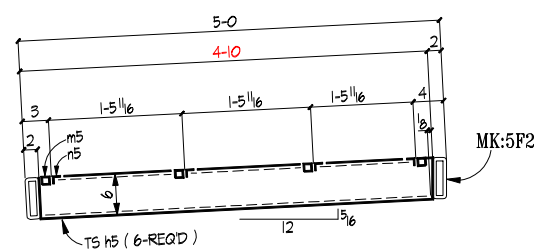
SECTION C



4 FRAMES MK:5F3
Ref 12/54 & 5/53.1 & 11/54



SECTION A



SECTION B

Contractor to Verify Dimensions

SHOP NOTES 1. ADD WEEP HOLES TO TS's

— UNLESS NOTED OTHERWISE —

None * OPEN HOLES ETOXX ELECTRODES

COATING Hot Dip Galvanized

MATERIAL GRADE SHELL BE A36 U.N.O.

WF SHAPES TUBES

CHANNELS PIPES

REF DWG As Noted Per Each Detail

— PRINT RECORD —

APPV'L	DATE	DESCRIPTION OF REVISIONS MADE TO DRAWING
09-28-04		1
		2
		3

TSD TEXAS STEEL DETAILERS
Specializing in Miscellaneous Steel Detailing
Email us @ TSD-5A@Mail.EVI.Net

FABRICATOR	L5 Steel
DETAILS OF PROJECT	Canopy Frame
LOCATION	Silverado Station Plan
CUSTOMER	1604 @ Bandera Road
ARCHITECT	Browning Construction
ENGINEER	Hodges & Associates
DETAIL BY	Hunt & Joiner, Inc
CHK'R	
REV #	09-21-04
APPV'D	
JOB #	029-04
DWG #	5